

# RTL2832U+E4000 數位電視棒軟體無線電驅動安裝說明

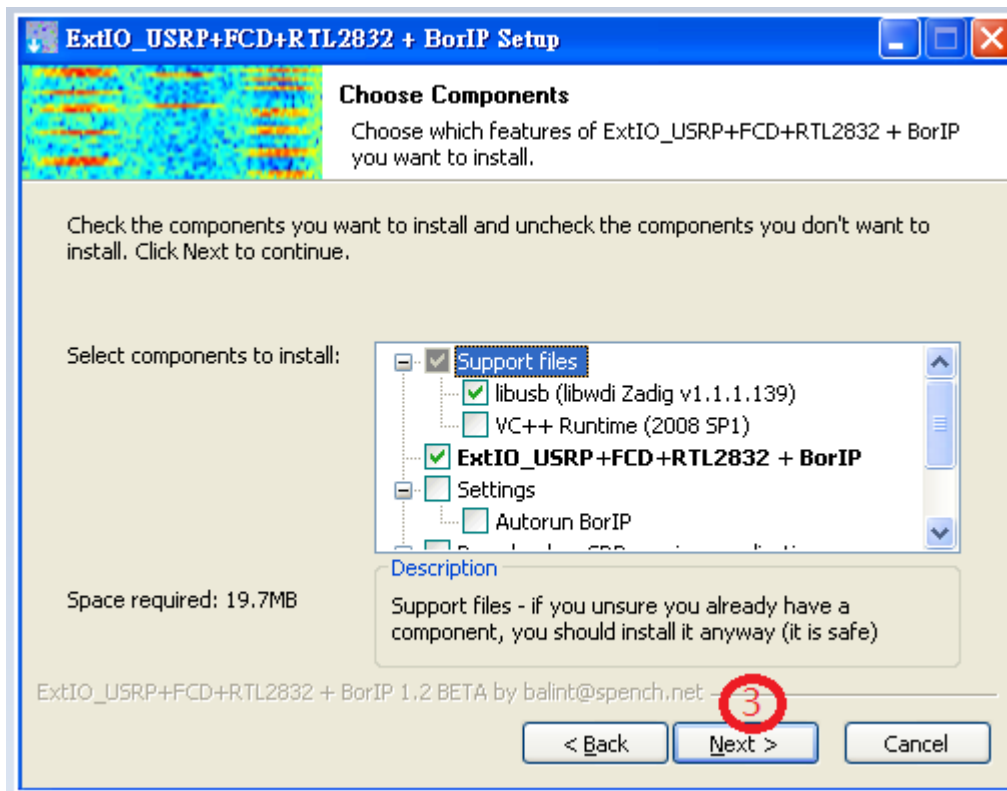
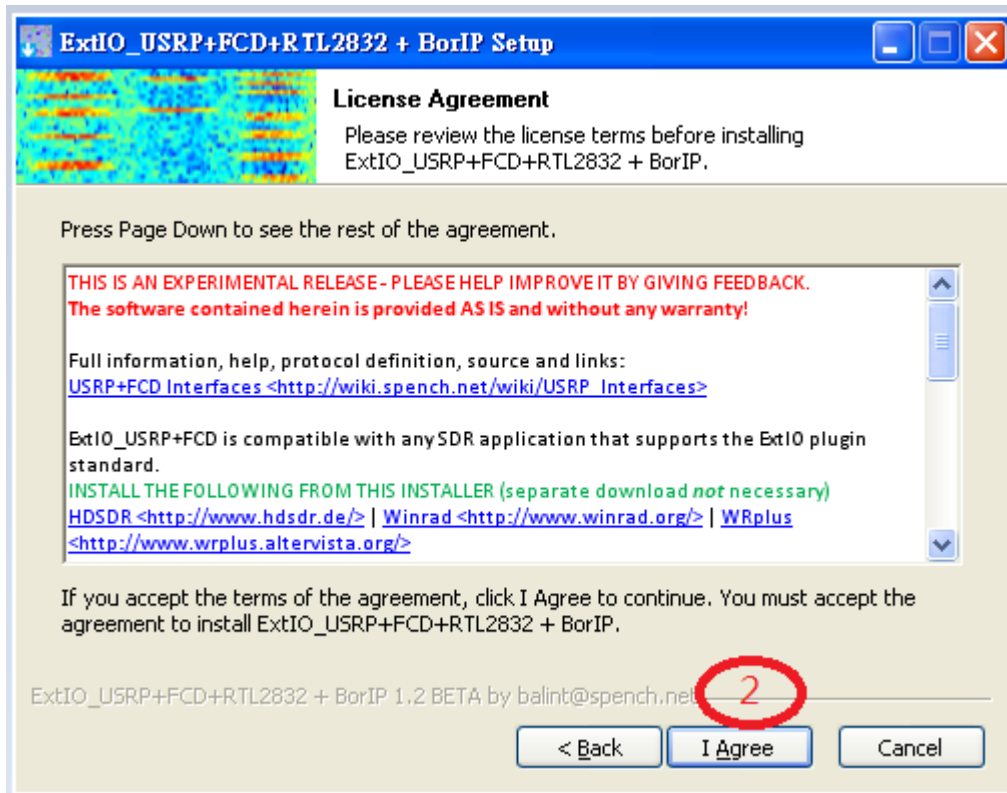
Wong/VR2KW

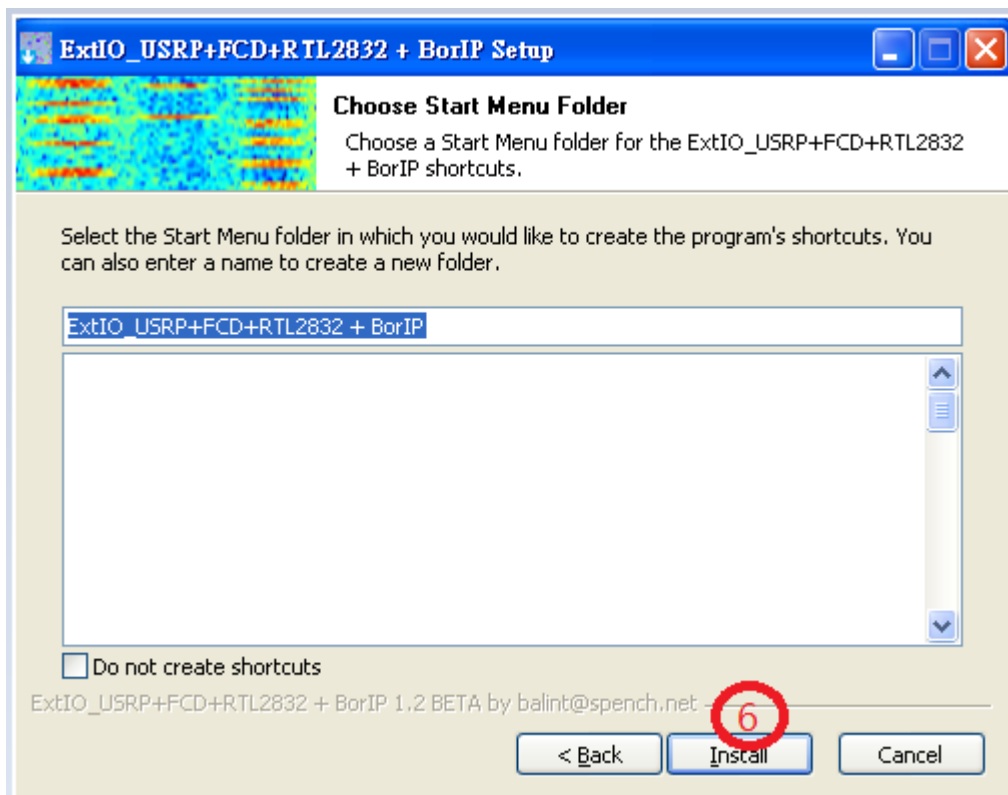
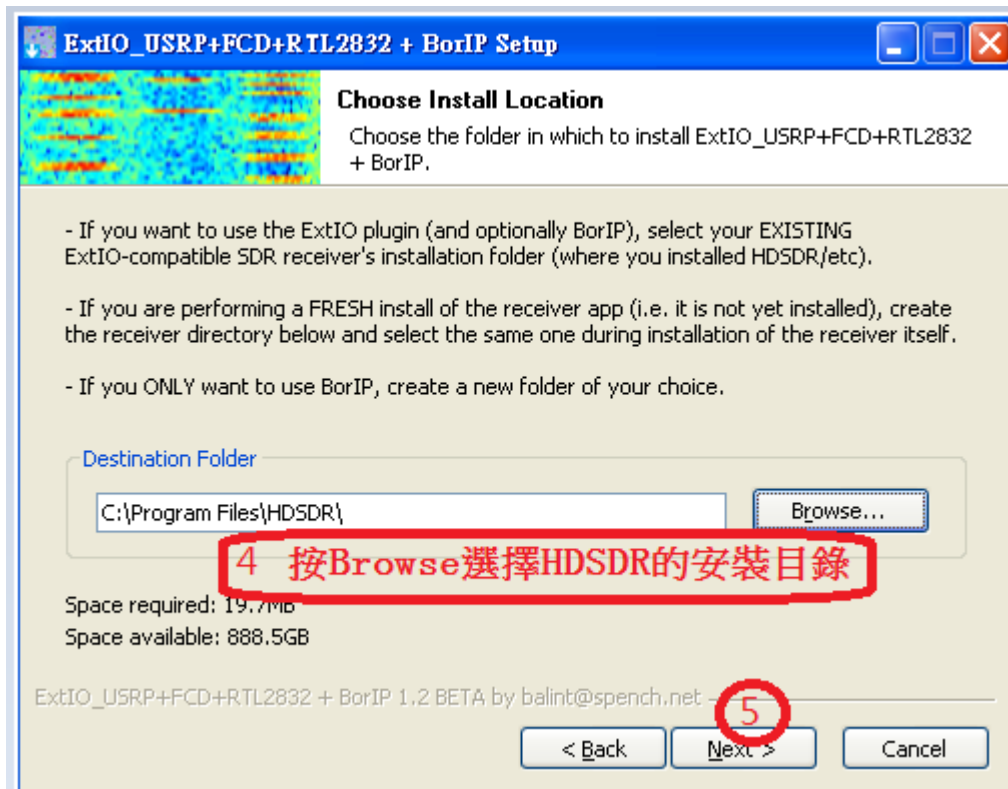
安裝驅動前請先安裝 SDR 應用軟體，推薦使用 HSDR

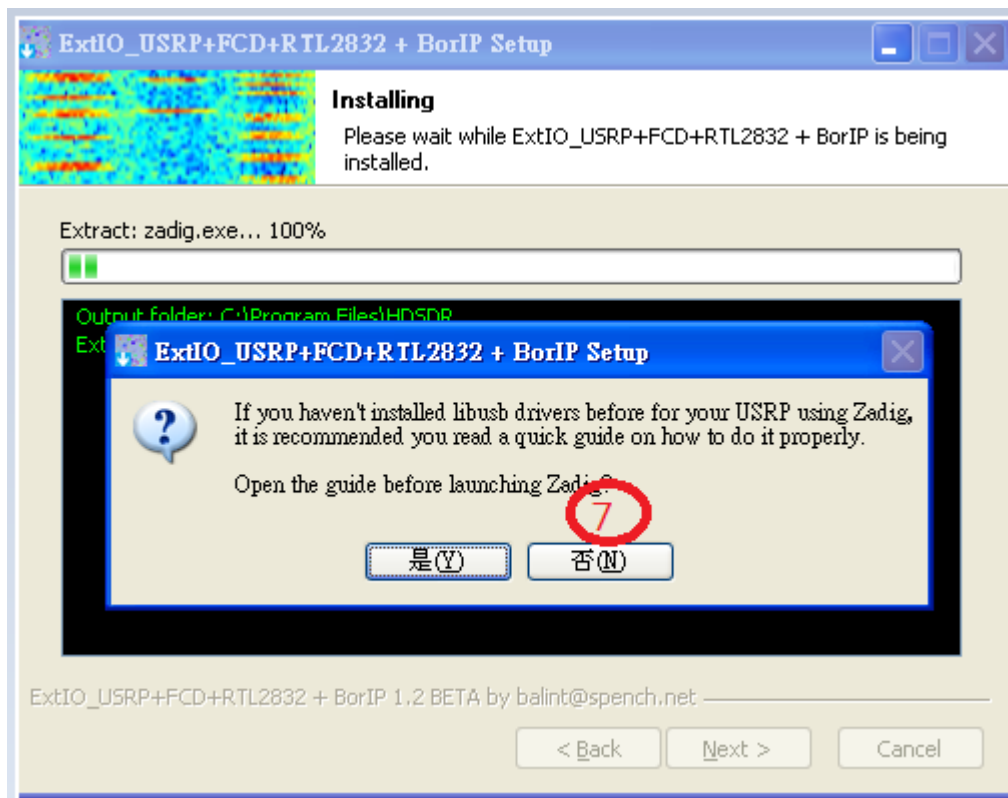
**注意：安裝這個驅動前請先徹底卸載電視棒原配的程序和驅動**

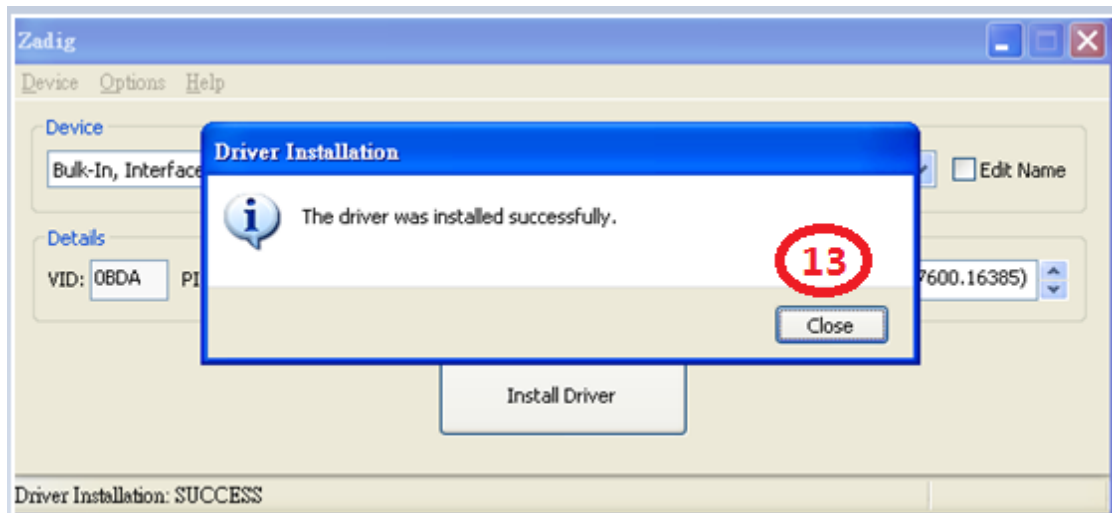
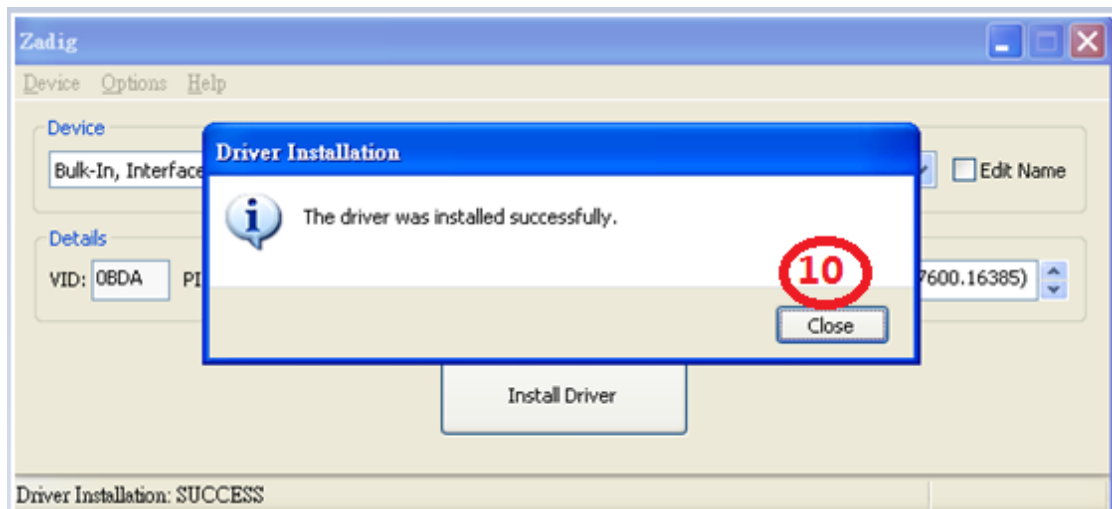
## 安裝驅動



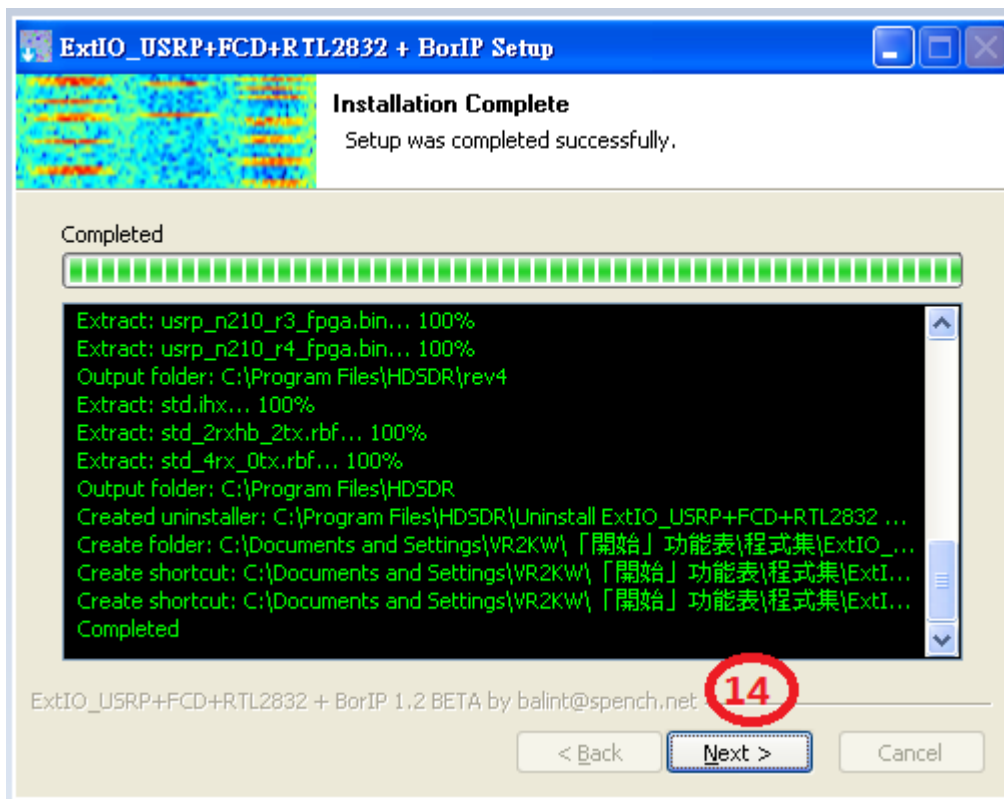




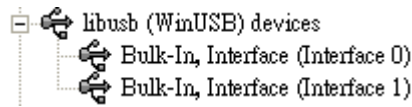




第二個設備安裝完成後，按紅色的叉關閉這個視窗，然後軟體會繼續安裝程式



看到兩個設備了



運行 HSDR



彈出這個視窗就按確定



然後一路下去點 USRP

**Device control** ✖

Remote:


Device hint:  ▼ Create

Sample rate:  ▼ Msp/s Set

Antenna:  ▼

Offset:  Hz ...

**Gain/Attenuation**

Min  Max

Range:  Mid Current:

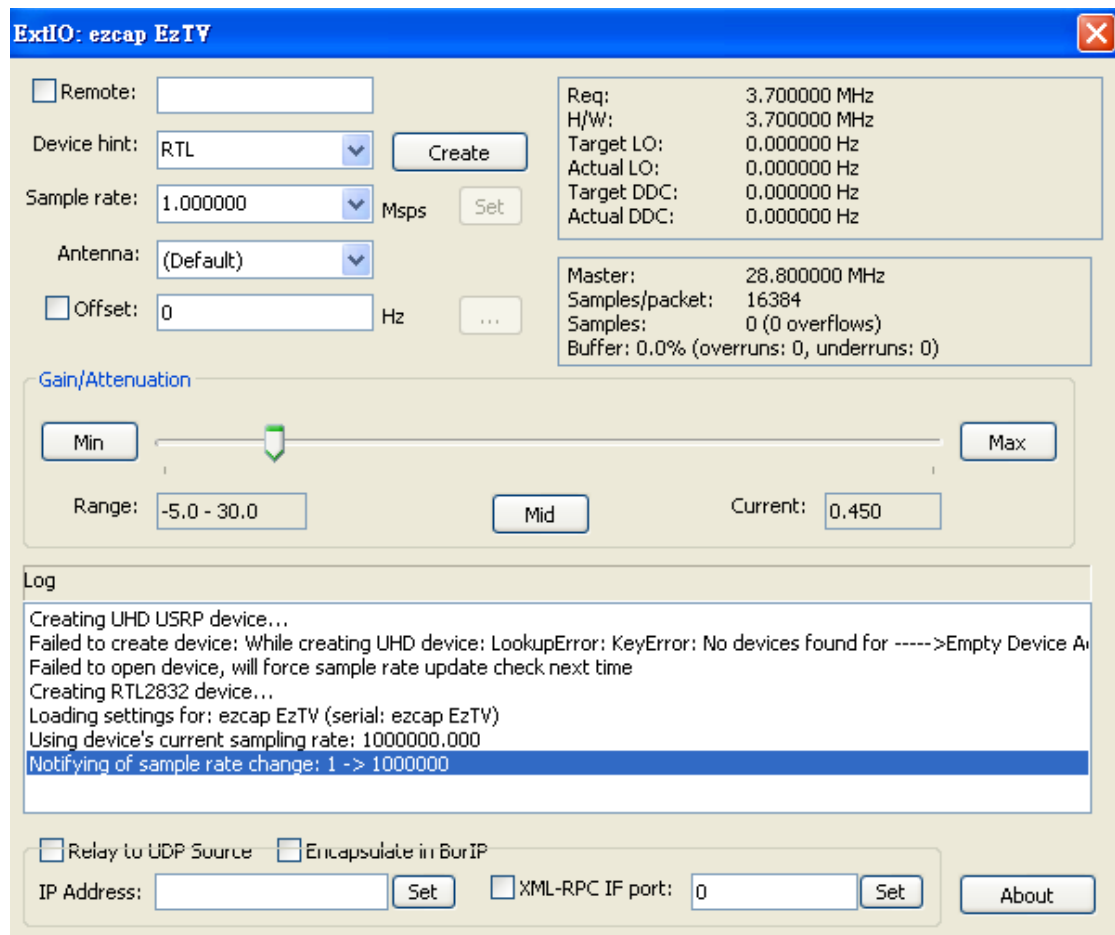
**Log**

```
Creating UHD USRP device...
Failed to create device: While creating UHD device: LookupError: KeyError: No devices found for ----->Empty Device A
Failed to open device, will force sample rate update check next time
```

Relay to UDP Source  Encapsulate in BorIP

IP Address:  Set  XML-RPC IF port:  Set About





在 Device hint 輸入 RTL 後按 Create，設置完成



點 Start 啟動解調



上面是模式，下面 LO 是電視棒的本振頻率，Tune 是實際收聽的頻率