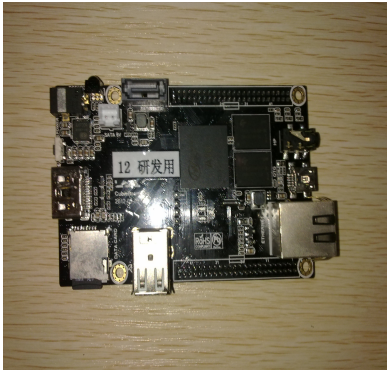


Install ubuntu 12.04 on Cubieboard

Tools:



I. Download ubuntu image&Tool:

http://linux-sunxi.org/Install_Ubuntu_Linux_for_Cubieboard

Livesuit(x86_64)

cb_a10_nand_ubuntu_desktop_12.04_v1.03.

II. LiveSuitV3.05 for linux installation

Preface:

LiveSuit for linux had supported several common Releases,such as Ubuntu, Fedora, Redhat, CentOS,and it's Drivers have been well supported the kernel version 3.0 Or higher version. You can also use Window's Livesuit to burning your Ubuntu system.

Installation Guide:

1. The binary executable file is LiveSuit.run.We must ensure that the file is executable,we can execute in the terminal:

```
$chmod +x LiveSuit.run
```

Increase the permissions to the file.

2.Then we can run LiveSuit.run to install.If the system point out that there is lack of dkms module.Ubuntu user can use this command to install dkms.

```
$sudo apt-get install dkms
```

Please use the yum install or the network to download the dkms,if you are the other linux version user.

3.The LiveSuit.run program install to ~/bin/. Awdev-dkms_0.4_all.deb in the ~/Bin/ directory can be used

for Ubuntu user. And you can use this command to Reinstall the drives:

```
$dpkg -i awdev-dkms_0.4_all.deb
```

If you are the Redhat user, you can use this command to Reinstall the drives:

```
$rpm -ivh awdev-0.4-1dkms.noarch.rpm --force.
```

4. The server has to be rebooted for the changes to take effect. Enter the `~/Bin/` directory and use `./LiveSuit.sh` to run the LiveSuit. Ubuntu user can add udev rule to read and write the device without root privileges by this way:

(1) opening a terminal and enter:

```
$ sudo vim /etc/udev/rules.d/10-local.rules
```

(2) enter the root rule and replace the "test" with the user group of the Current user.

```
SUBSYSTEM!="usb_device", ACTION!="add",  
GOTO="objdev_rules_end"  
#USBasp  
ATTRS{idVendor}=="1f3a", ATTRS{idProduct}=="efe8",  
GROUP="test", MODE="0666"  
LABEL="objdev_rules_end"
```

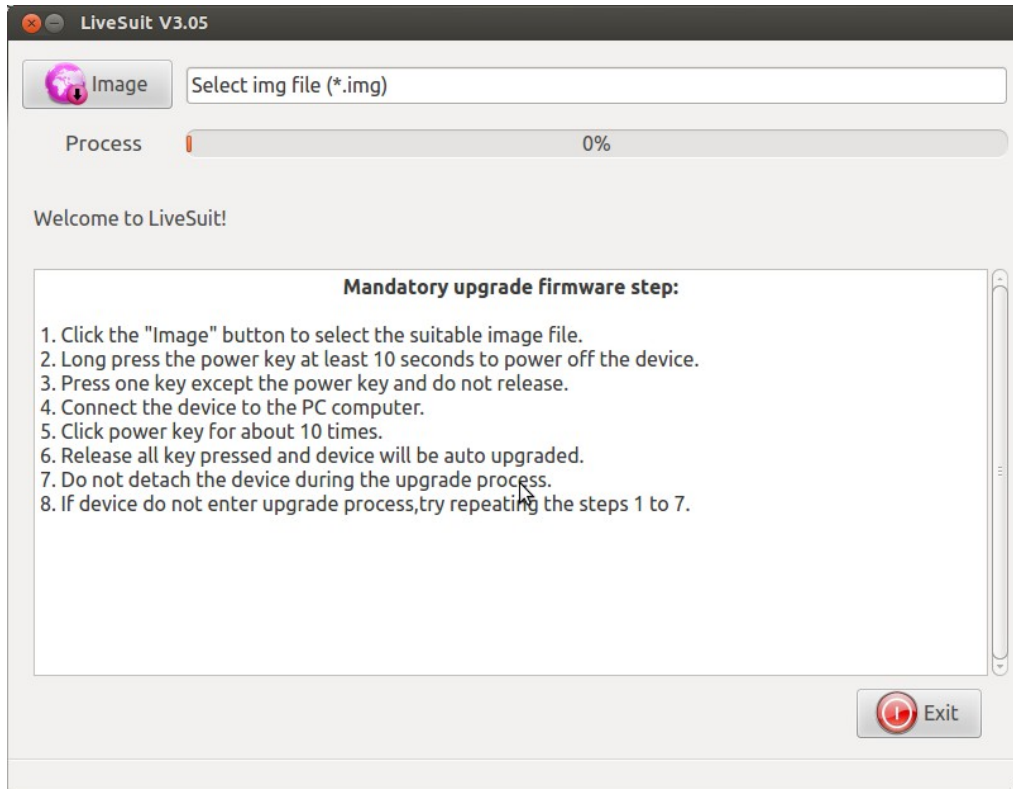
(3). You must save the file and then you can run "LiveSuit.sh" as normal user after reboot your machine or restart udev service. The command of restart udev service is:

```
$ sudo service udev restart.
```

The other edition users please refer to information about "udev" and add udev rules consider Ubuntu10.04 as a precedent. If you have not add udev rules, you should enter

the command "sudo./LiveSuit.sh" to run the program. We suggest users add udev rules and not run the program as root user in case the bug by root environment variable haven't initialization and other unknow bugs.

Start Livesuit, you can see it:



5.Closing the program or disconnecting the device When you burning firmware will break the device.

Note:

(1).The installation directory keeps the file which have back up drive:

Ubuntu installation package:awdev-djns_0.4_all.deb

RedHat,Fedora,CentOS installation package:awdev-0.4-1 dkms.noarch.rpm

(2).If you have update kernel edition,but the drive not be autoload,please install the drive again by manual operation,install drive need root power.

(3).Open the terminal,use the command to install if Debian range Ubuntu:

```
$ sudo dpkg -i awdev-dkms_0.4_all.deb
```

use the command to install if RedHat,Fedora,CentOs:

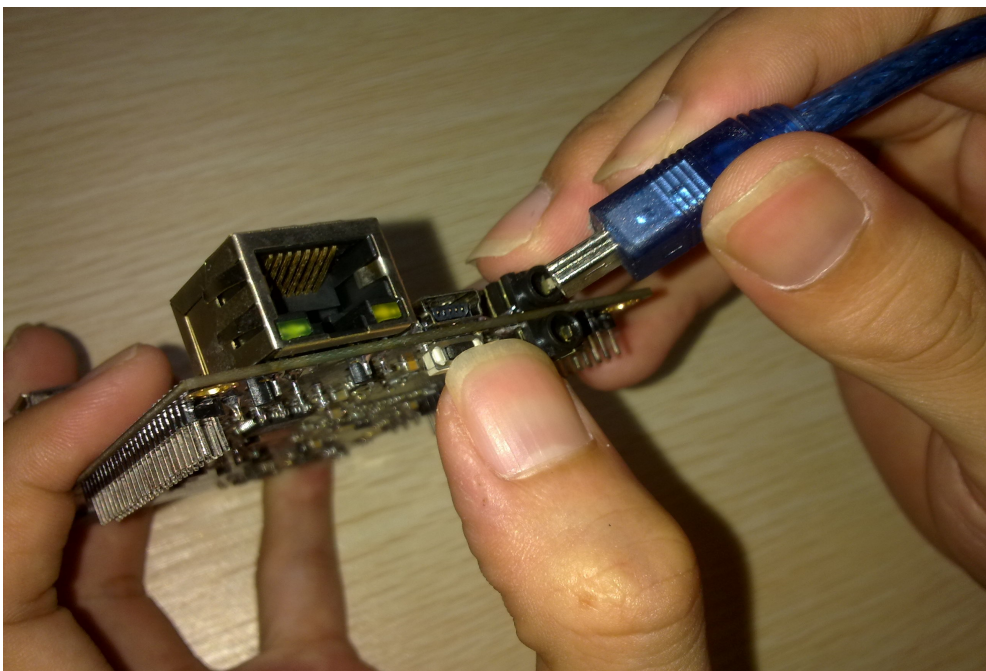
```
$sudo rpm -ivh awdev-0.4-1 dkms.noarch.rpm
```

III.Install ubuntu 12.04

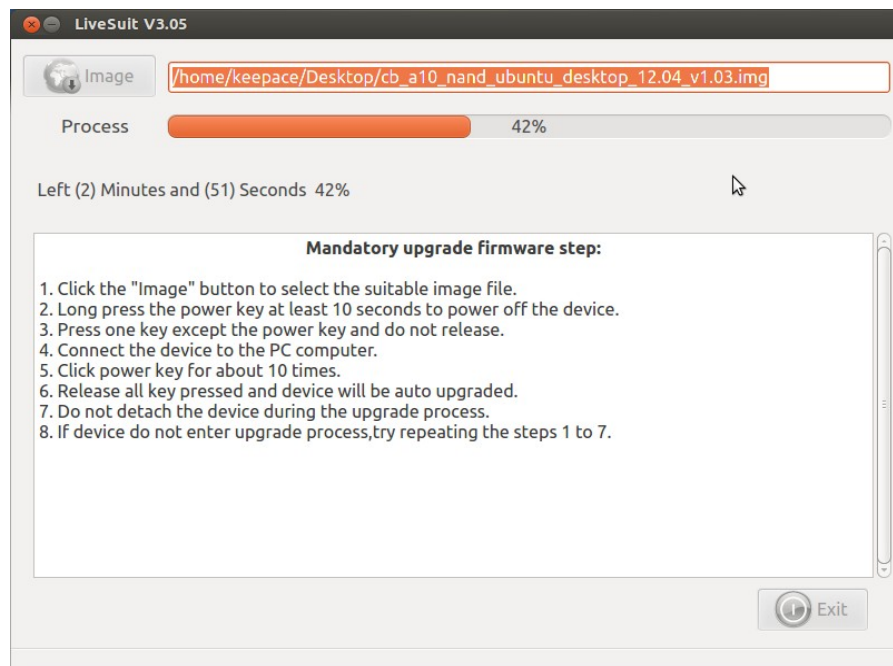
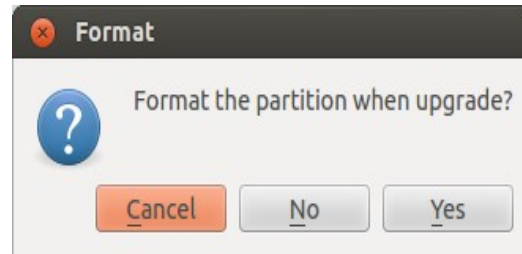
1.select the image:

cb_a10_nand_ubuntu_desktop_12.04_v1.03.

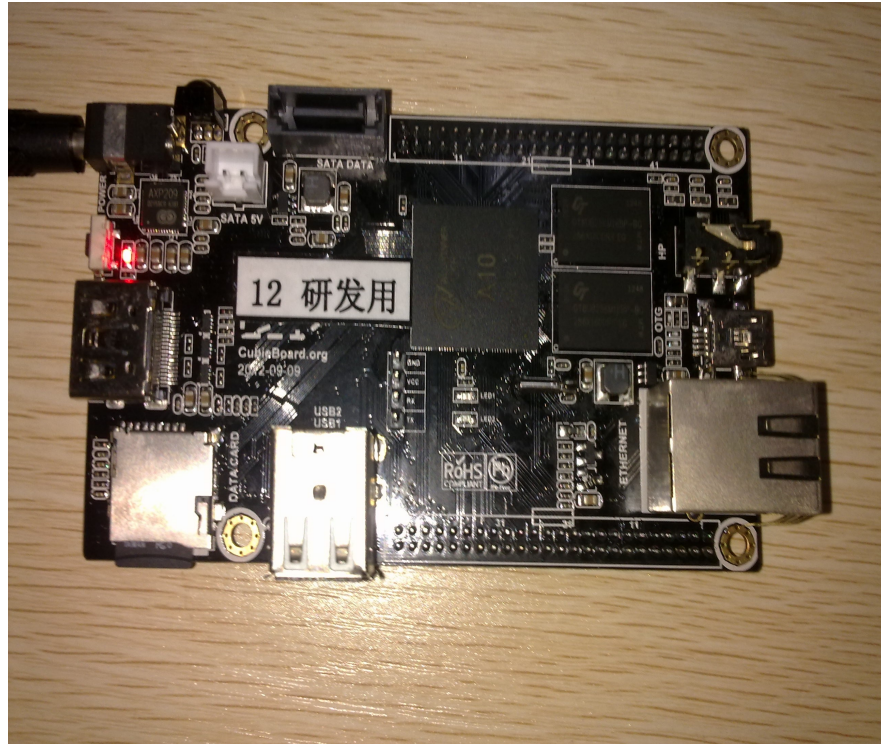
2.Conneting cubieboard and PC by Mini-USB .When you insert the mini-USB, you must hold down the "FEL" button until fully inserted.



2. Chosing "yes" and Burning.



3. Power on



4. Next, Using Cubieboard as a host to connect to other devices: mouse, keyboard, and access to the network.



ENDING