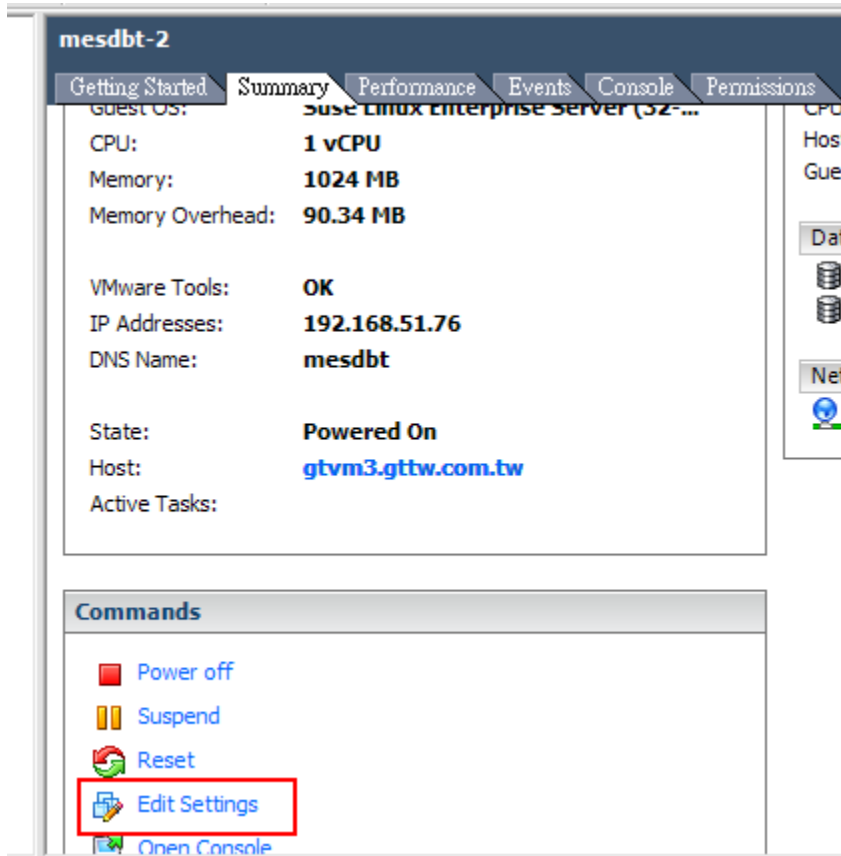


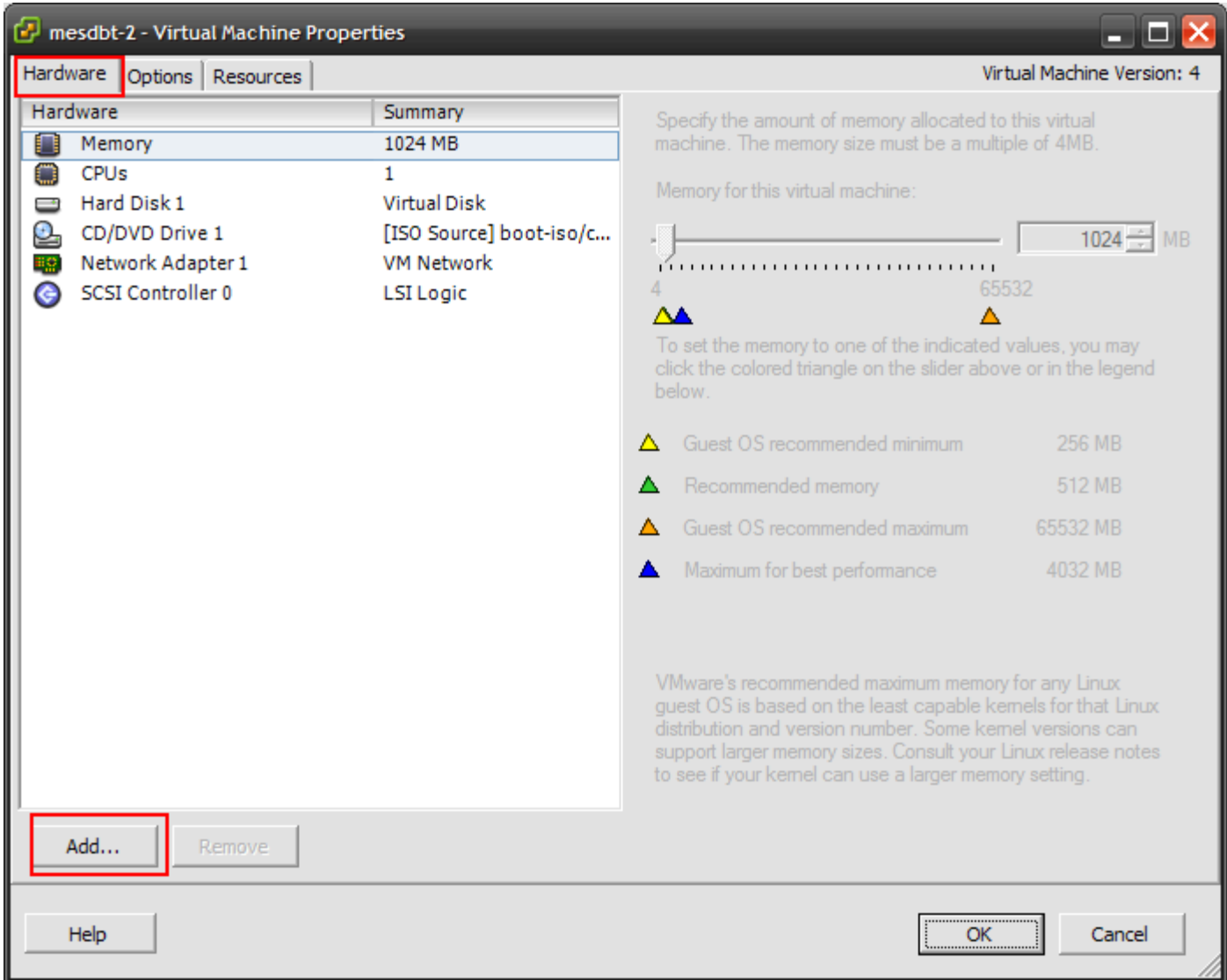
????? Linux guest OS????????????? Virtual Disk ??????????

### VMware Infrastructure Client

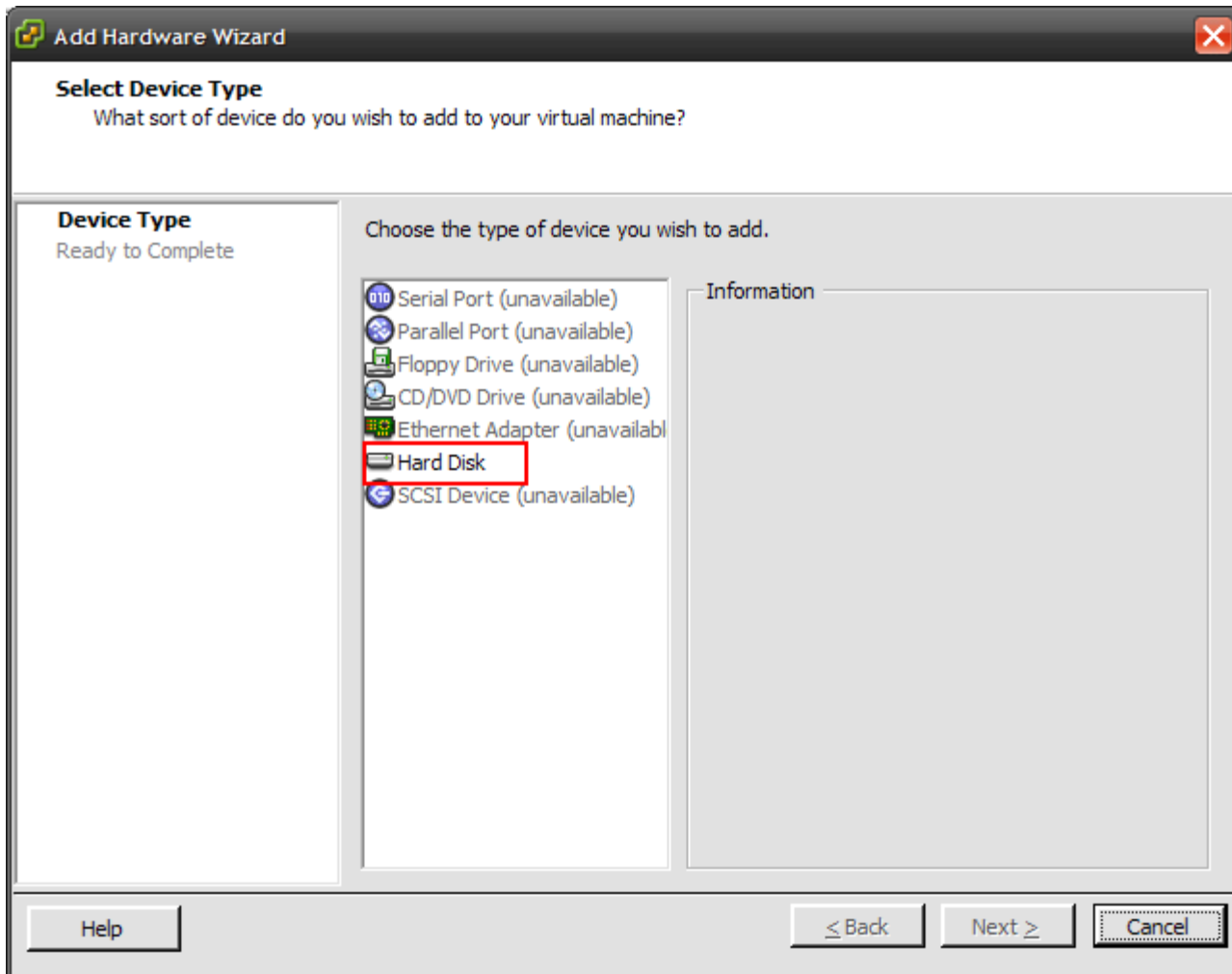
// ??? Guest OS -> Summary -> Edit Settings



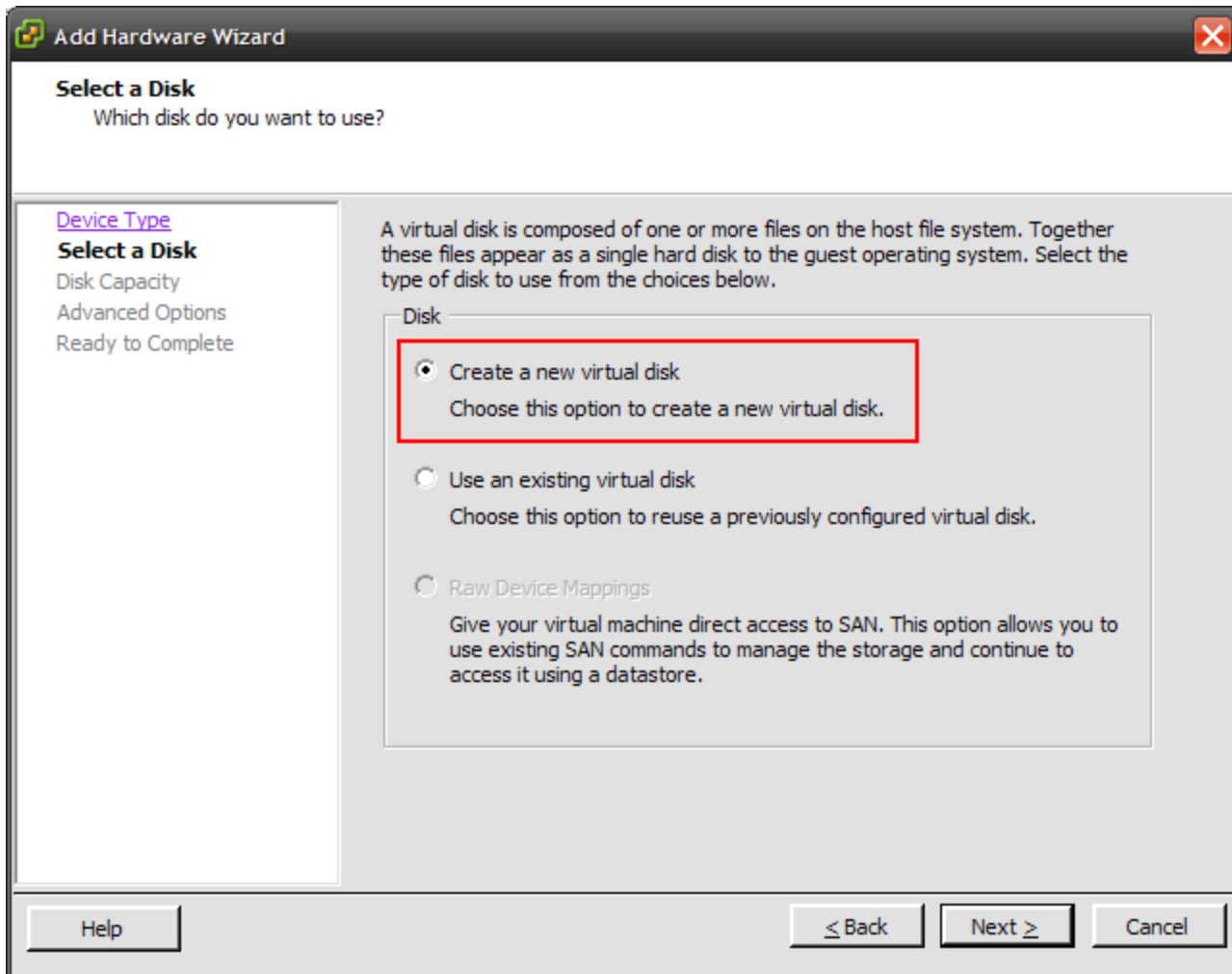
// Hardware -> Add



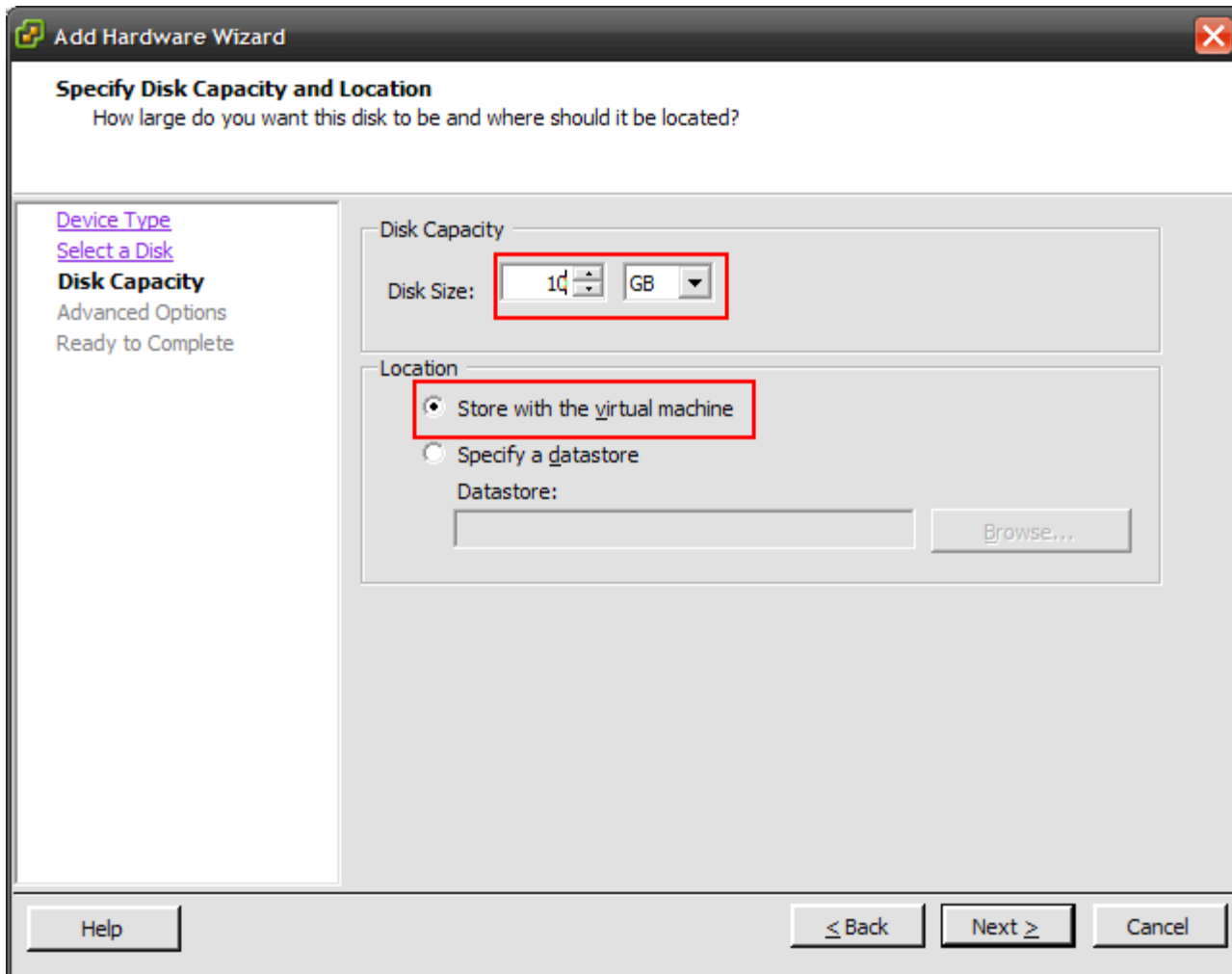
// Hard Disk



// Create a new virtual disk



// ?????? -> Store with the virtual machine



// Independent -> Persistent



// ???vmware?? host ID number????????????

?? host id = scsi2 = host2

shell> echo "- - -" > /sys/class/scsi\_host/host2/scan

// ?? disk ??????

> fdisk -l

?????<http://www.cyberciti.biz/tips/vmware...ing-guest.html>