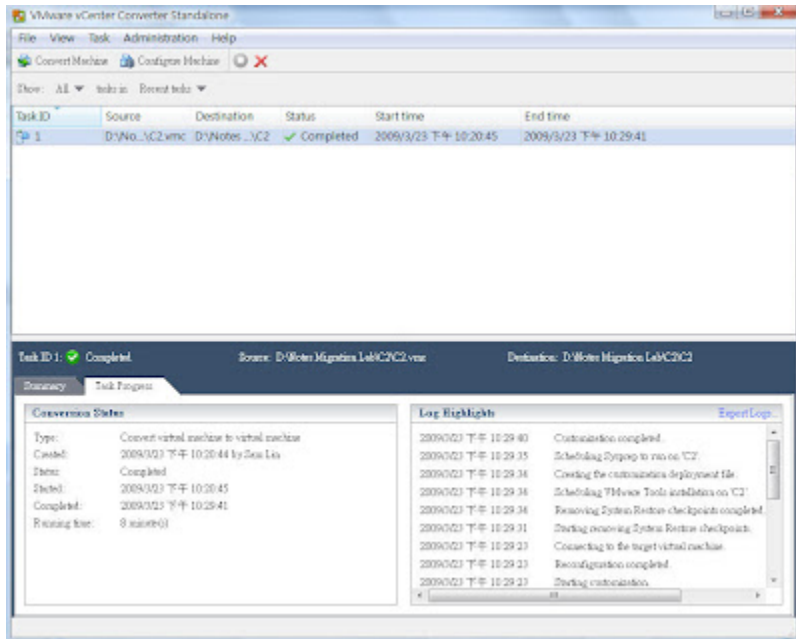


?????vsphere ??Clone,??,?????????. ??VI?? ?clone??,????????????????.

?????Cluster Storage ,VCB??? ???????VM ???????Disk Image????????A????B??,??????VM??????.

## VMware vCenter Converter stand alone



<http://www.vmware.com/products/converter/>

??vCenter Converter stand alone,???Clone,??,??(??VMDK??) ??????????????.

???? Powered-on machine ?????VM??????????.

???? <https://my.vmware.com/web/vmware/eva...er?p=converter>

??

- ?????????VMDK ??????? <

- ????? snapshot????????????????????

<http://kb.vmware.com/selfservice/mic...rnalId=1000936>

## VM Explorer

[http://www.trilead.com/Products/VM\\_Explorer/](http://www.trilead.com/Products/VM_Explorer/)

- VM Explorer
- ????????? ??,Source VM ????.
- ?????VM???? snapshot ?
- ??vsphere? VM????????windows or linux ?.

???? VM ??????? ESXi ????????? vmx ????????? Guest OS?VI ?????? move/copy ?????? move ??(??mac address?  
?? ,?Linux VM?????????)

?????VM????????? ESX host?

???back up file ?????? ??????? ???Server ????.  
?????.

VMX ??????Host OS ?SSH ?

????????????10? ??????

?Clone ??? Host os ??port, Target Host OS ?????? Port .

**For ESXi Servers:** 443 (HTTPS) 22(SSh)

????????? ??VDDK

<https://my.vmware.com/group/vmware/g...P510-VDDK-510#>

**For ESXi Servers:**

For ESXi editions only TCP Port 443 (HTTPS) is required

If the option 'Use VMX Agent on ESXi' is enabled, Ports 22(SSh), 443 (HTTPS), 62000-65000 are required.

**For ESX Servers:**

For ESX servers 22 (SSH), 443 (HTTPS) and TCP Ports 2500-3000 are required.

To verify the ESX firewall you can run the following command

*esxcfg-firewall -q*

To modify manually your firewall please run the following command

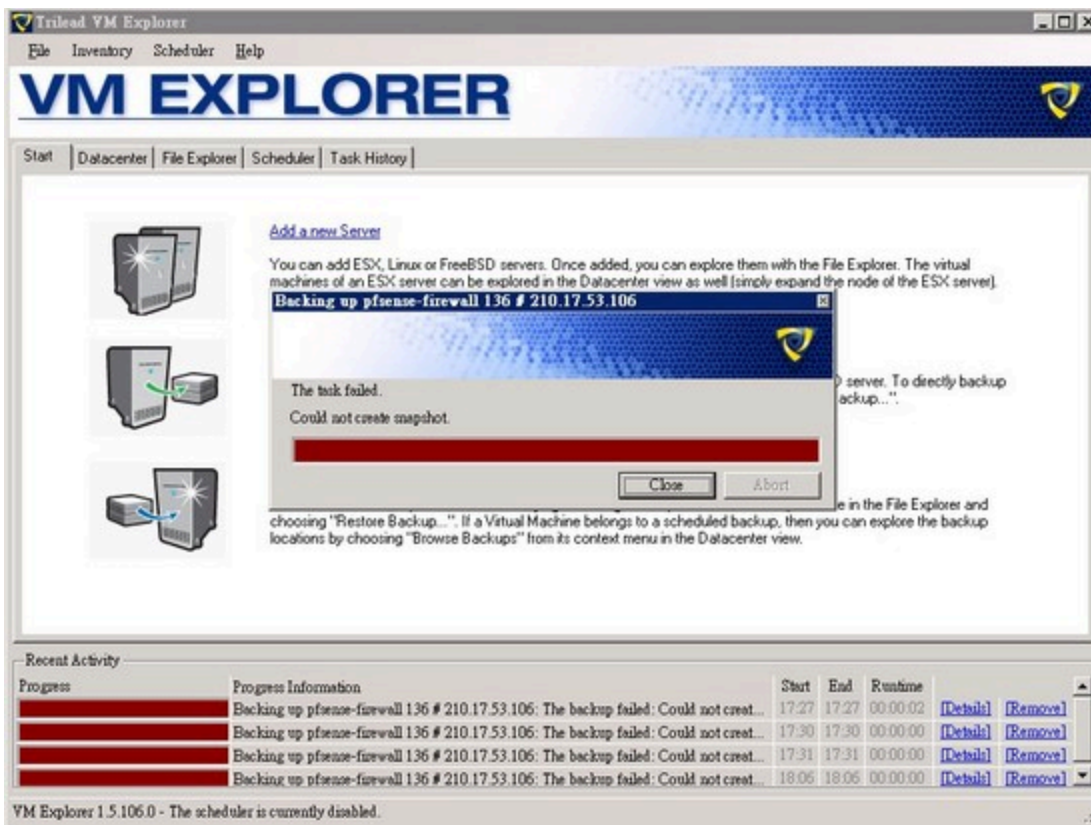
*esxcfg-firewall -o 2500:3000,tcp,in,VMX-Explorer*

*esxcfg-firewall -o 2500:3000,tcp,out,VMX-Explorer*

If you are copying from/to ESXi using the agent, you have also to open the following ports on your ESX server

*esxcfg-firewall -o 62000:65000,tcp,in,VMX-Explorer*

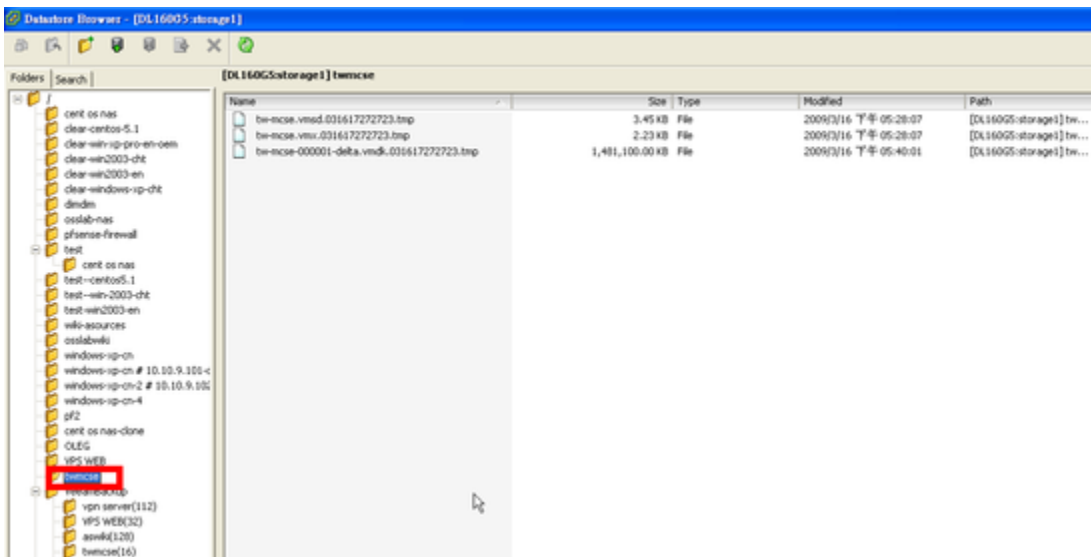
*esxcfg-firewall -o 62000:65000,tcp,out,VMX-Explorer*

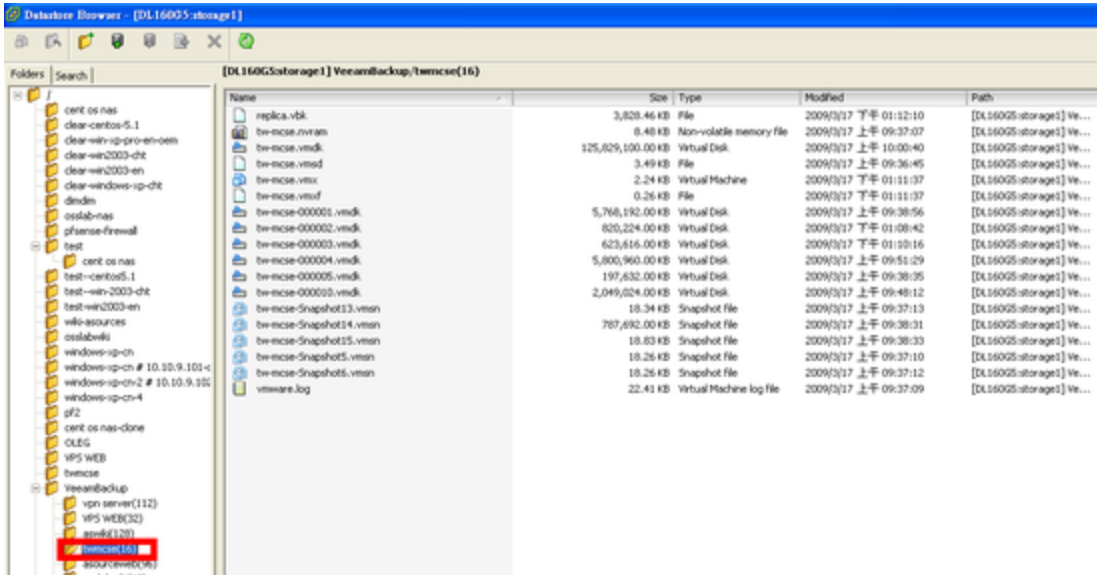


## Veeam backup

<http://www.veeam.com/vmware-esx-backup.html>

Veeam ??Clone ???VM ????????veeambackup??





???

<http://communities.vmware.com/docs/DOC-8760>