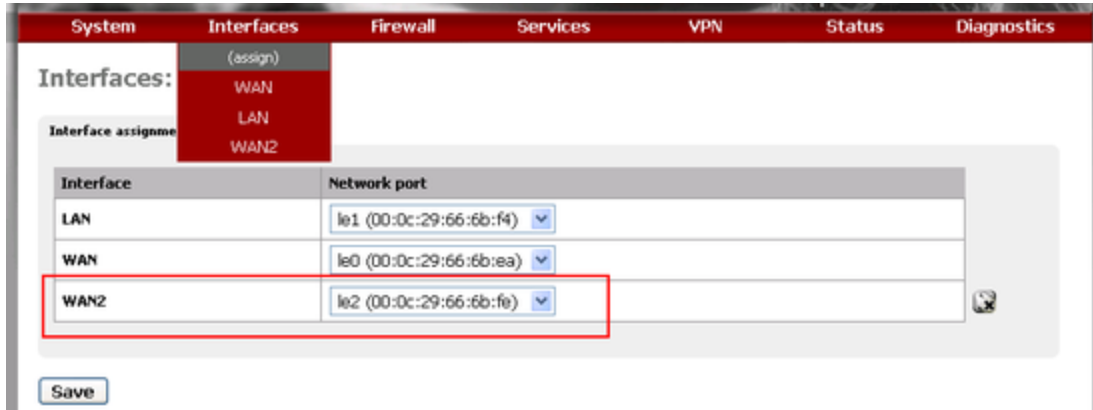


(?:alang)

??????? pfSense ???? WAN ???? Public IP???????????? IP ??????????????????????IP????????????????????
????????????????????????????Outbound loading Balance?

???????? WAN?LAN ????????????????????? IP ?????????????????????

?Interface??assign???? ??? OPT1???????????????? WAN2?



??????????

?Interface??OPT1???????? WAN2?

Interfaces: Optional 1 (WAN2)

Optional Interface Configuration

Enable Optional 1 interface

Description

WAN2

Enter a description (name) for the interface here.

IP Configuration ? Bridge with WAN
Gateway ?? ?IP?????????

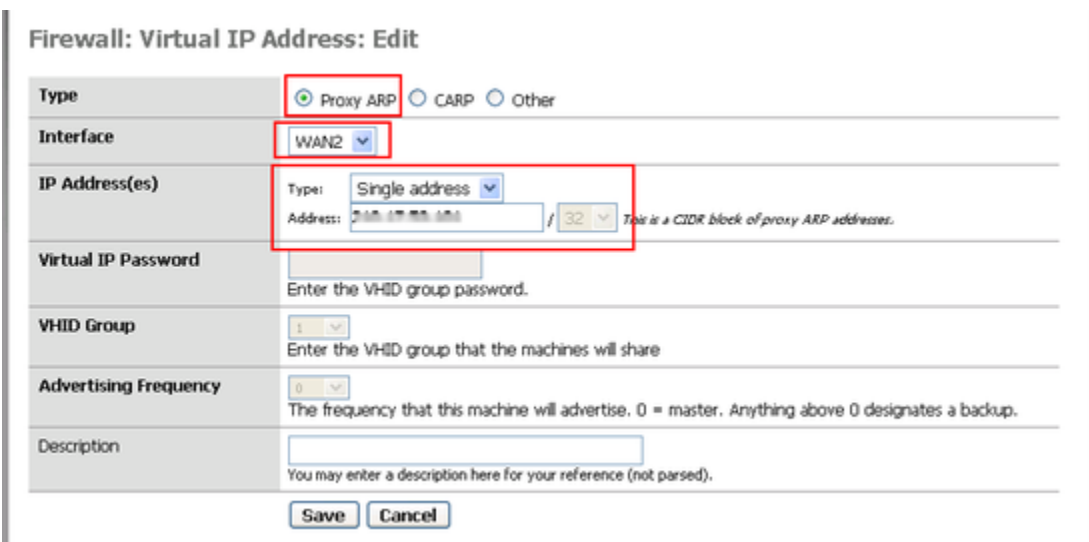


??????? Virtual IPs

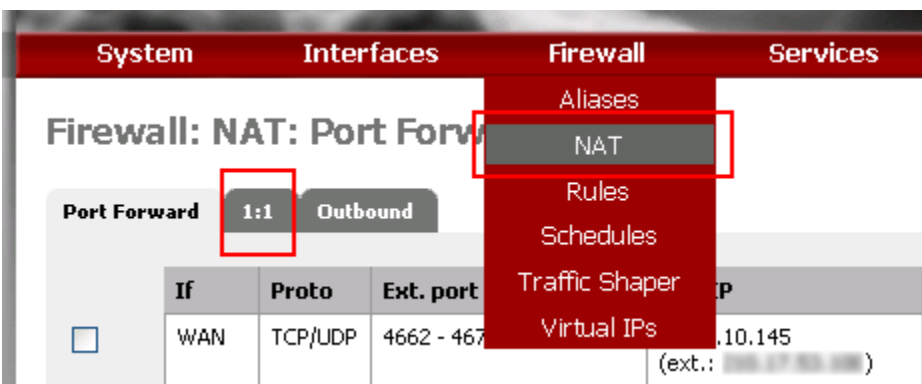
?Firewall??Virtual IPs?



Type ? proxy ARP
 Interface ? WAN2
 IP Address ???????? IP ??



?????? NAT 1:1
 ?Firewall??NAT??1:1?



Interface ? WAN2
 External subnet ???????? IP ??(????)???? sub-mask ??? 32?
 Internal subnet ???????? IP ???

Firewall: NAT: 1:1: Edit

| | | |
|-----------------|--------------|----|
| Interface | WAN2 | |
| External subnet | 10.10.10.112 | 32 |
| Internal subnet | 10.10.10.112 | |
| Description | Test | |

??????????

?Firewall??Rules?

System Interfaces Firewall Services

Firewall: Rules

LAN WAN **WAN2** PPTP VPN

Aliases
NAT
Rules
Schedules
Traffic Shaper
Virtual IPs

| Proto | Source | Destination | Port | Gateway |
|--|---------|-------------|------|---------|
| <input type="checkbox"/> <input checked="" type="checkbox"/> | TCP/UDP | * | * | * |
| <input type="checkbox"/> <input checked="" type="checkbox"/> | ICMP | * | * | * |

Action ? Pass

Interface ? WAN2

Protocol ? TCP/UDP

| | |
|------------------|---|
| Action | <input type="text" value="Pass"/> Choose what to do with packets that match the criteria specified below. Hint: the difference between block and reject is that with reject, a packet (TCP RST or ICMP port unreachable for UDP) is returned to the sender, whereas with block the packet is dropped silently. In either case, the original packet is discarded. Reject only works when the protocol is set to either TCP or UDP (but not "TCP/UDP") below. |
| Disabled | <input type="checkbox"/> Disable this rule Set this option to disable this rule without removing it from the list. |
| Interface | <input type="text" value="WAN2"/> Choose on which interface packets must come in to match this rule. |
| Protocol | <input type="text" value="ICMP"/> Choose which IP protocol this rule should match. Hint: in most cases, you should specify TCP here. |
| ICMP type | <input type="text" value="any"/> If you selected ICMP for the protocol above, you may specify an ICMP type here. |
| Source | <input type="checkbox"/> not Use this option to invert the sense of the match. Type: <input type="text" value="any"/> Address: <input type="text" value=""/> / <input type="text" value="31"/> <input type="button" value="Advanced"/> - Show source port range |
| Source OS | OS Type: <input type="text" value="any"/> Note: this only works for TCP rules |

| | |
|-------------------------|---|
| Destination | <input type="checkbox"/> not Use this option to invert the sense of the match. Type: <input type="text" value="any"/> Address: <input type="text" value=""/> / <input type="text" value="31"/> |
| Log | <input type="checkbox"/> Log packets that are handled by this rule Hint: the firewall has limited local log space. Don't turn on logging for everything. If you want to do a lot of logging, consider using a remote syslog server (see the Diagnostics: System logs: Settings page). |
| Advanced Options | <input type="button" value="Advanced"/> - Show advanced options |

??!!

????

- [How to Setup Failover and Load Balancing in PfSense](#)