

?? MLDoney ??????????????????

????

????? [???? on FreeNAS?](#)

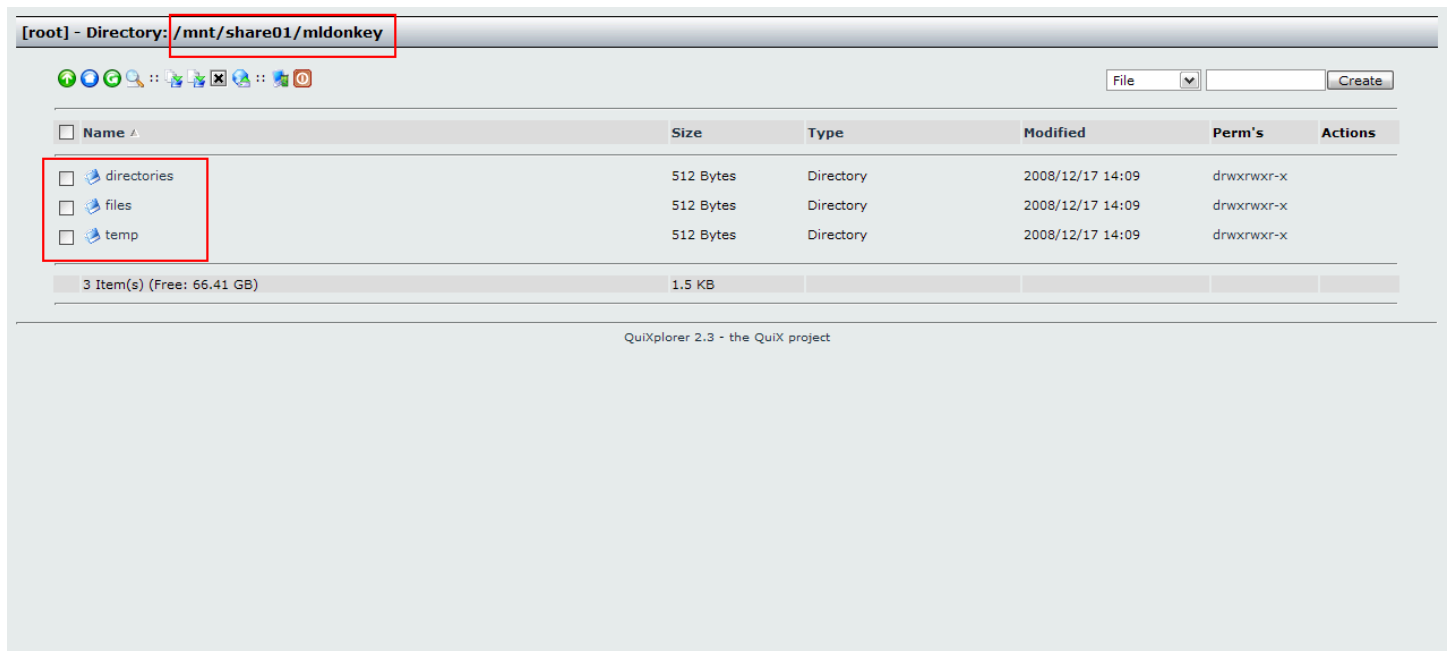
???????????????????????????????? /mnt/share01?

???????? temp ????

?? Advanced -> File Manager ??????????????????????????????

- mldonkey/temp
- mldonkey/files
- mldonkey/directories

??????



?? MLDonkey

?????? <http://eeebox> ip:4080/

Advanced -> Command???? MLDonkey ???

Command = ps ax | grep mlnet

?? mlnet ? PID ?????? kill ??????

command = kill <PID>

FreeNAS
The free network attached storage

System Network Disks Services Access Status Diagnostics Advanced Help

Advanced | Execute command

```
$ ps ax | grep mlnet
1743 ?? S 0:00.00 sh -c ps ax | grep mlnet
1745 ?? R 0:00.00 grep mlnet
1622 con- SN 0:00.54 /usr/local/bin/mlnet-real
```

Command

Download

Upload

PHP Command

FreeNAS © 2005-2008 by Olivier Cochard-Labbe. All rights reserved.

Advanced -> File Editor???????????????? IP ????

File path = /root/.mldonkey/downloads.ini

?? 127.0.0.1???????????? IP ?????? 10.1.1.0?

```
allowed_ips = [
  "127.0.0.1";"10.1.1.0/24";]
```

??????????

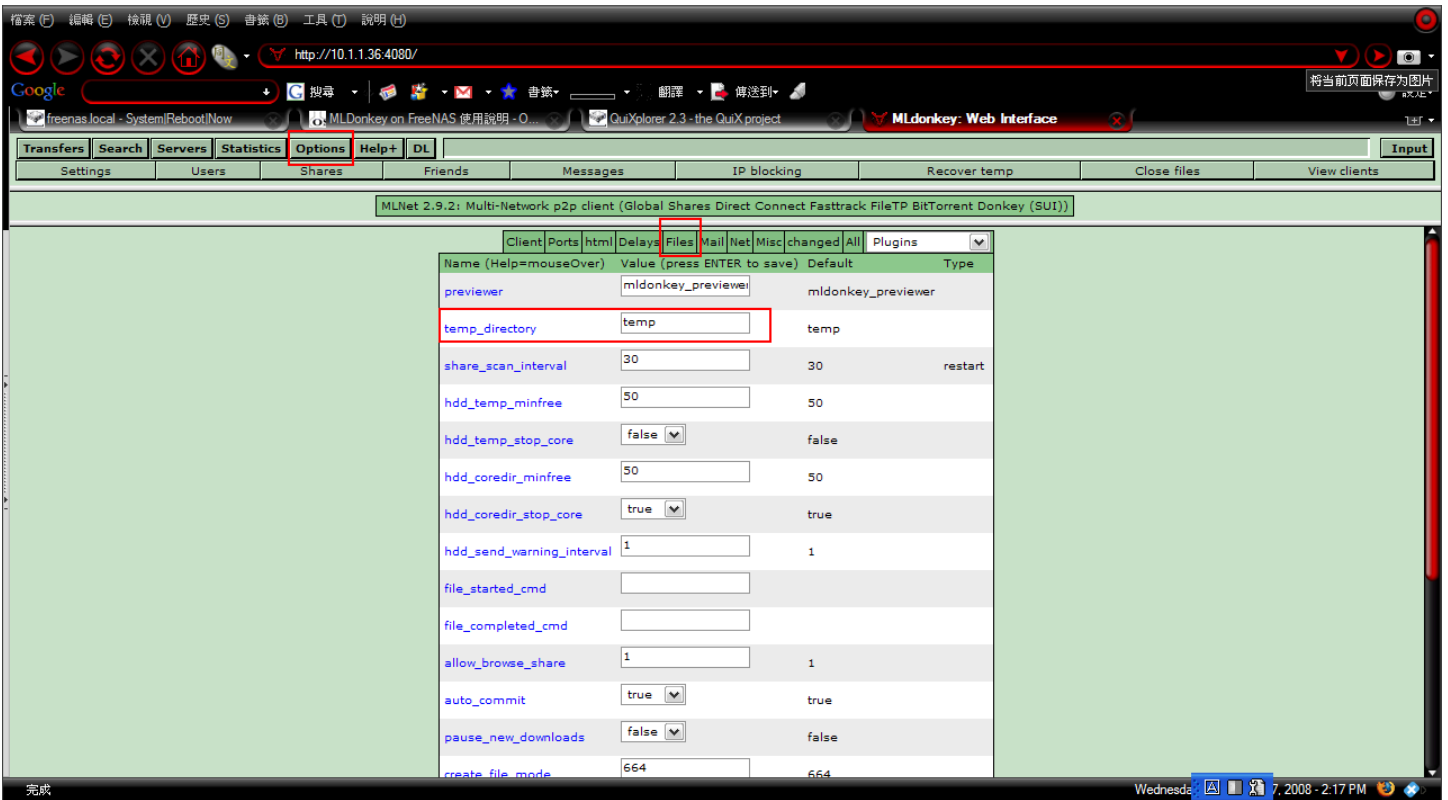
?? MLDonkey ??????????????????

1. ??????

Options -> Files

temp_directory = /mnt/share01/mldonkey/temp

? Enter ???



2. ?????/??

Options -> Shares -> Add Share??????????

0 /mnt/share01/mldonkey/files incoming_files

0 /mnt/share01/mldonkey/directories incoming_directories

?????

<??> <??> <??>

?????????

????????????????

????????????????

?????



???????????????? Unshare?

Unshare	P	Directory	Strategy	used	free	% free	FS
Unshare	0	/mnt/share01/mldonkey/directories	incoming_directories	5.77G	66.41G	91%	ufs
Unshare	0	/mnt/share01/mldonkey/files	incoming_files	5.77G	66.41G	91%	ufs
Unshare	0	shared	all_files	366.6M	127.1M	25%	ufs
Unshare	0	incoming/files	incoming_files	366.6M	127.1M	25%	ufs
Unshare	0	incoming/directories	incoming_directories	366.6M	127.1M	25%	ufs

Help text

System -> Reboot ?????

MLDonkey ??

?? MLDonkey ? Web ?????????????????????? Sancho????????????????????

????????? Sancho??????

????

Host = eeebox IP

Port = 4001

Username = admin

Password = ??

Host setup manager

Core settings
Please specify core settings.

This GUI displays information provided by a core application.
Please specify the username, password, ip address and gui port of your core.

The optional host manager allows you to store core settings for multiple hosts.

Host settings: 10.10.10.125:4001

Host: Default = 127.0.0.1
 Port: Default = 4001
 Username: Default = admin
 Password: Default = <empty>
 Ask for password on connect
 Description: Default = <empty>
 Core protocol: Default = mldonkey

Default(127.0.0.1:4001)
 10.10.10.125:4001

Use ssh2 port forwarding tunnel (advanced option)

SSH host: SSH remote host:
 SSH user: SSH remote port:
 SSH pass: SSH local port:
 SSH port:

SSH forward http preview port

SSH local preview port: SSH remote preview port:

--- Proxy [host:port]:
 Proxy user: Proxy pass:

??????

The screenshot displays the Sancho MLDonkey application window. The title bar reads "sancho 0.9.4-59 (10.10.10.125)". The menu bar includes "File", "View", "Tools", and "Help". The toolbar contains icons for "Transfers", "Search", "Servers", "Shares", "Console", "Statistics", "Friends", "Rooms", and "WebBrowser".

The main window is divided into two sections:

- Downloads:** Shows 0 active and 1 paused download. The table below lists the details of the paused download.
- Uploaders:** Shows 0 uploaders. The table below is currently empty.

Downloads Table:

Id	Network	Filename	Size	Downloaded	%	Sources	Avail	Rate	Chunks	ETA	Priority
1	Donkey	[MP3][精選]最愛情歌.rar	678.7 MB	0	0%	-	0%	Paused	0	-	No...

Uploaders Table:

Network	Name	Software	UL	DL	Connected	Address	Port	Kind	State
---------	------	----------	----	----	-----------	---------	------	------	-------

The status bar at the bottom shows "Connected 12.9.6.141" and network activity: "0.00 KB/s" (green) and "0.00 KB/s" (red).