

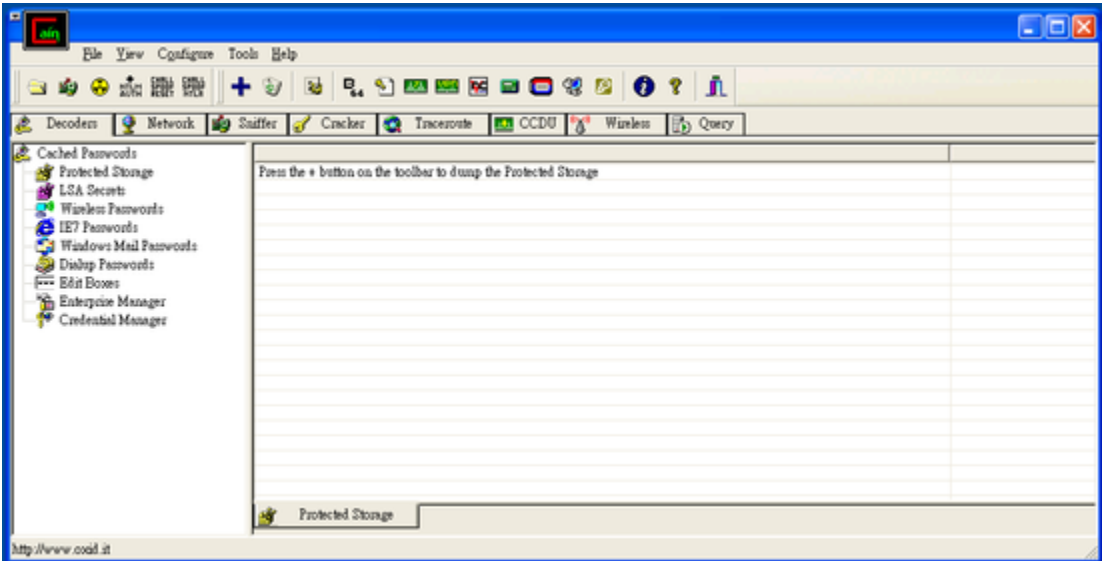
???????????????? SIP ????????????????????? SIP ???

?????????? LAN ?????? Windows ???? SIP ??????????? SIP ???? Internet ??????

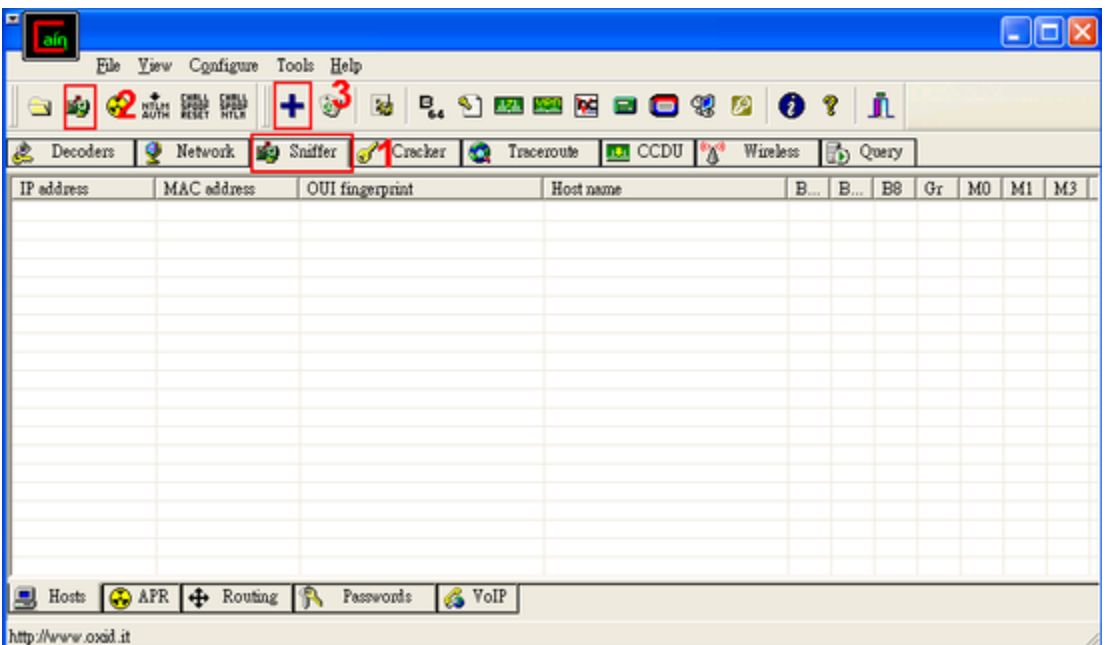
???? Cain & Abel
<http://www.oxid.it/cain.html>

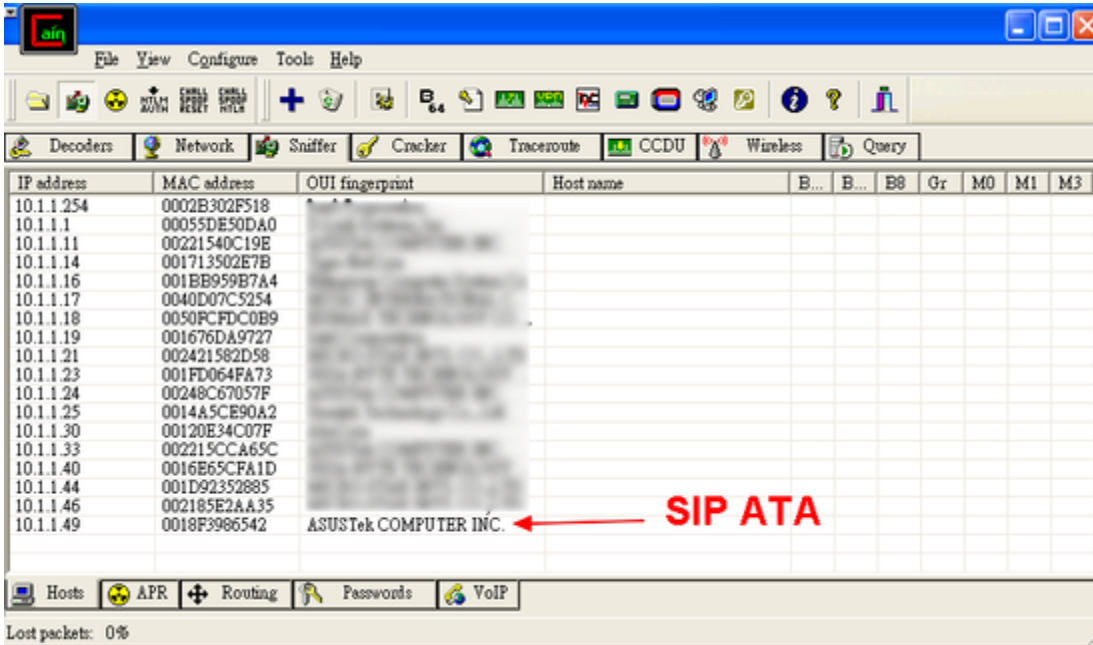
????

Tip: ???

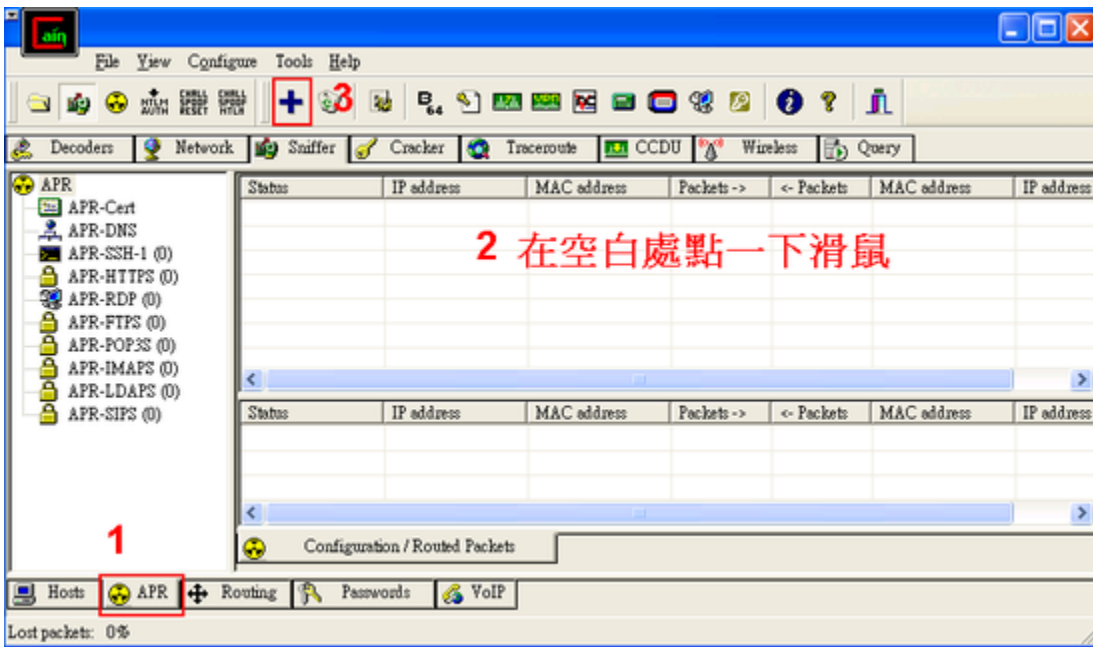


???????? SIP ??
?? Sniffer > ?? Start sniffer > ?? ?

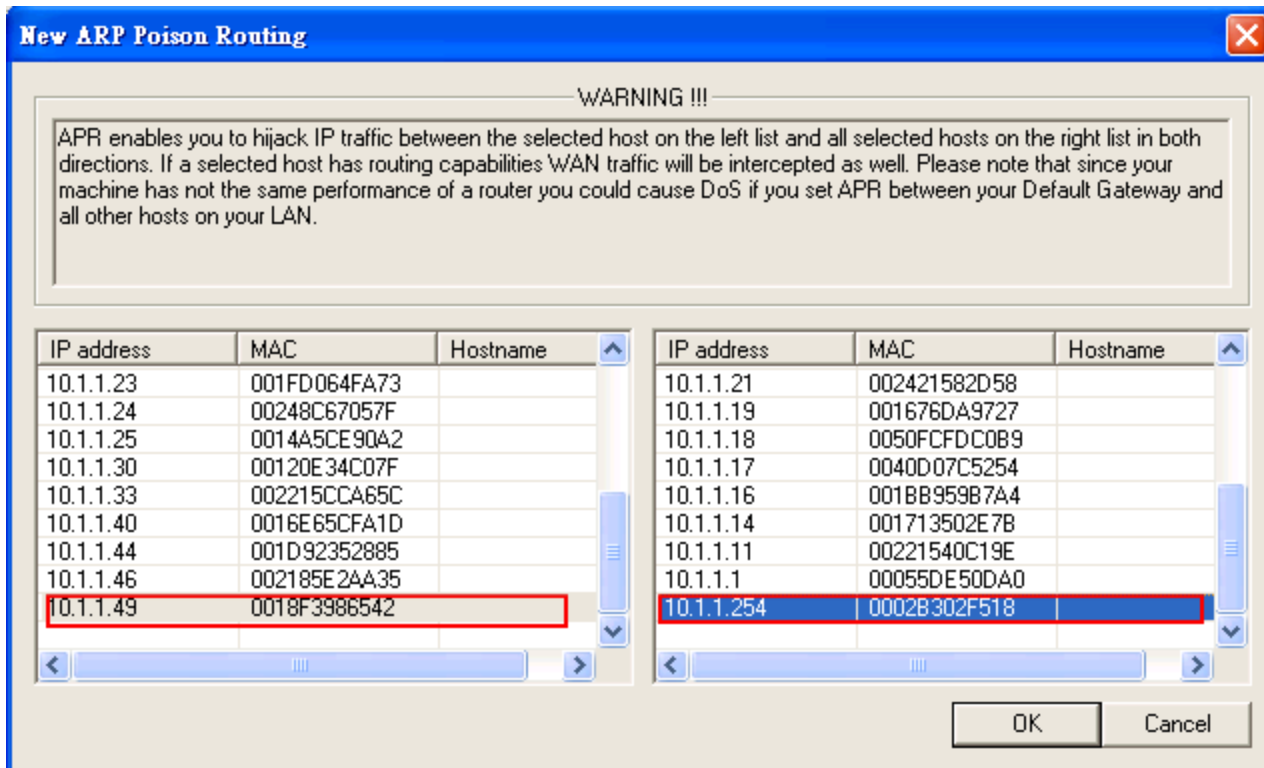




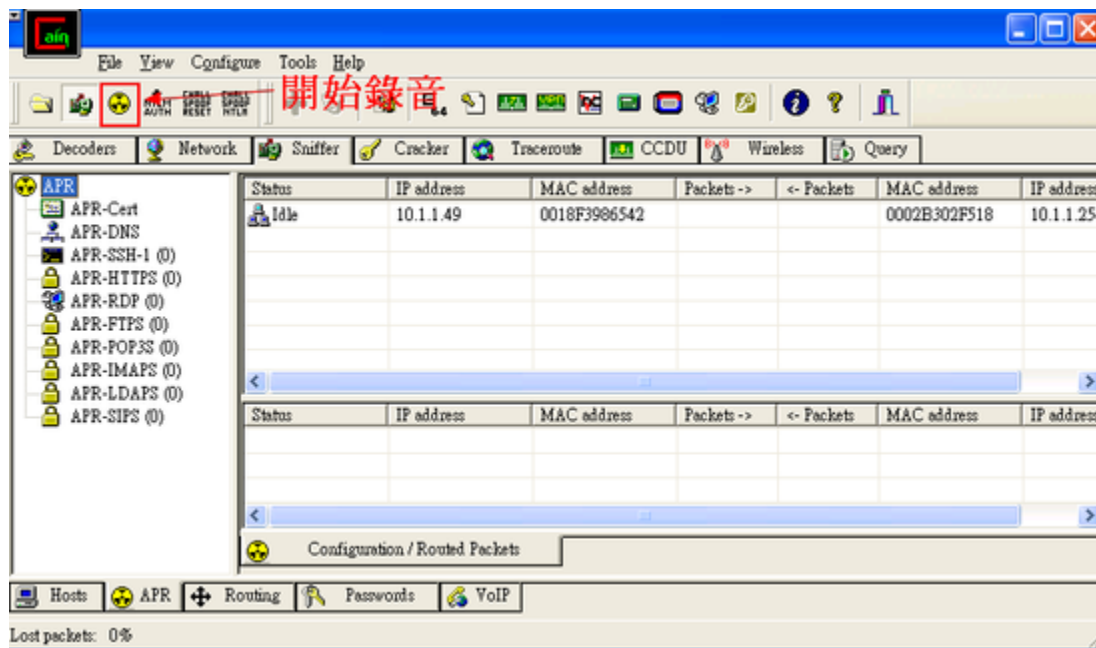
?? SIP ????????????? ARP ??????? SIP ??? RTP ?????????????
 ??? APR ?? >



???????????? SIP ????????? SIP ?????? SIP ????????? Internet ????? Gateway ????



???????????? start ARP ??



??? VoIP ???????????

The screenshot shows a software window with a menu bar (File, View, Configure, Tools, Help) and a toolbar with various icons. Below the toolbar is a tabbed interface with tabs for Decoders, Network, Sniffer, Cracker, Traceroute, CCDU, Wireless, and Query. The main area contains a table with the following data:

Started	Closed	IP1 (Codec)	IP2 (Codec)	Status	File
26/12/2009 - 18:21:16	26/12/2009 - 18:22:52	(...)	10.1.1.49-8002 (G729,8...)		RTP-20091226102258

At the bottom of the window, there is a toolbar with buttons for Hosts, APR, Routing, Passwords, and VoIP. The VoIP button is highlighted with a red box. Below the toolbar, it says "Lost packets: 0%".