

PBX ????

???PBX ?????????,?????,?thx????? ,????Asus Eee box.

? ??

- Elastix 1.2-4(Asterisk 1.4.21.2 + FreePBX 2.4.1.2)

? ??

- ASUS EeeBox????????,????????????????
- SDHC 8G ?????????????????????
- 1 GB DDR2 So-Dimm
- USB LAN Card ?????????????(??)  
USB ?? Davicom DM9601 <http://www.google.com.tw/search?hl=z...meta=&aq=f&oq=>
- Linksys PAP2000\*2
- Linksys PAP3000\*3

? ????

Elastix ?????SD CARD ?????

??????

???? Elastix 1.5.2-2 ?????????????

?? Elastix ??? CentOS 5 Linux ?????EEE BOX ???RTL8111C??

??????????

???????? <http://www.realtek.com.tw/downloads/...&GetDown=false>?????? Linux 8.008.00?

??????????

```
# tar xjf r8168-8.008.00.tar.bz2
# cd r8168-8.008.00
# make clean modules
# make install
# depmod -a
```

??????????

?? USB ??

// ?????????

#>lsusb

```
Bus 002 Device 001: ID 0000:0000
Bus 002 Device 002: ID 0a46:9601 Davicom Semiconductor, Inc. DM9601 To Fast Ethernet Adapter
Bus 003 Device 001: ID 0000:0000
Bus 003 Device 002: ID 05e3:ffe0 Genesys Logic, Inc.
```

```
// ????????? dm9601-Linux2.6_1.tar
?????http://www.davicom.com.tw/page1.aspx?no=209814
```

```
// ????????  
#>rmmod dm9601  
#>cd /lib/modules/2.6.18-92.1.22.el5/kernel/drivers/usb/net/  
#>mv dm9601.ko dm9601.ko.bak  
  
// ????????  
#>cd dm9601  
#>make  
#>cp dm9601.ko /lib/modules/2.6.18-92.1.22.el5/kernel/drivers/usb/net/
```

Notes: ????????????????

```
// ????  
#>vi /etc/modprobe.conf  
?????
```

alias eth1 dm9601

```
#>vi /etc/sysconfig/network-scripts/ifcfg-eth1
```

```
DEVICE=eth1  
BOOTPROTO=static  
ONBOOT=yes  
NETMASK=255.255.255.0  
IPADDR=192.168.1.50  
TYPE=Ethernet
```

```
// ????
```

```
// ??
```

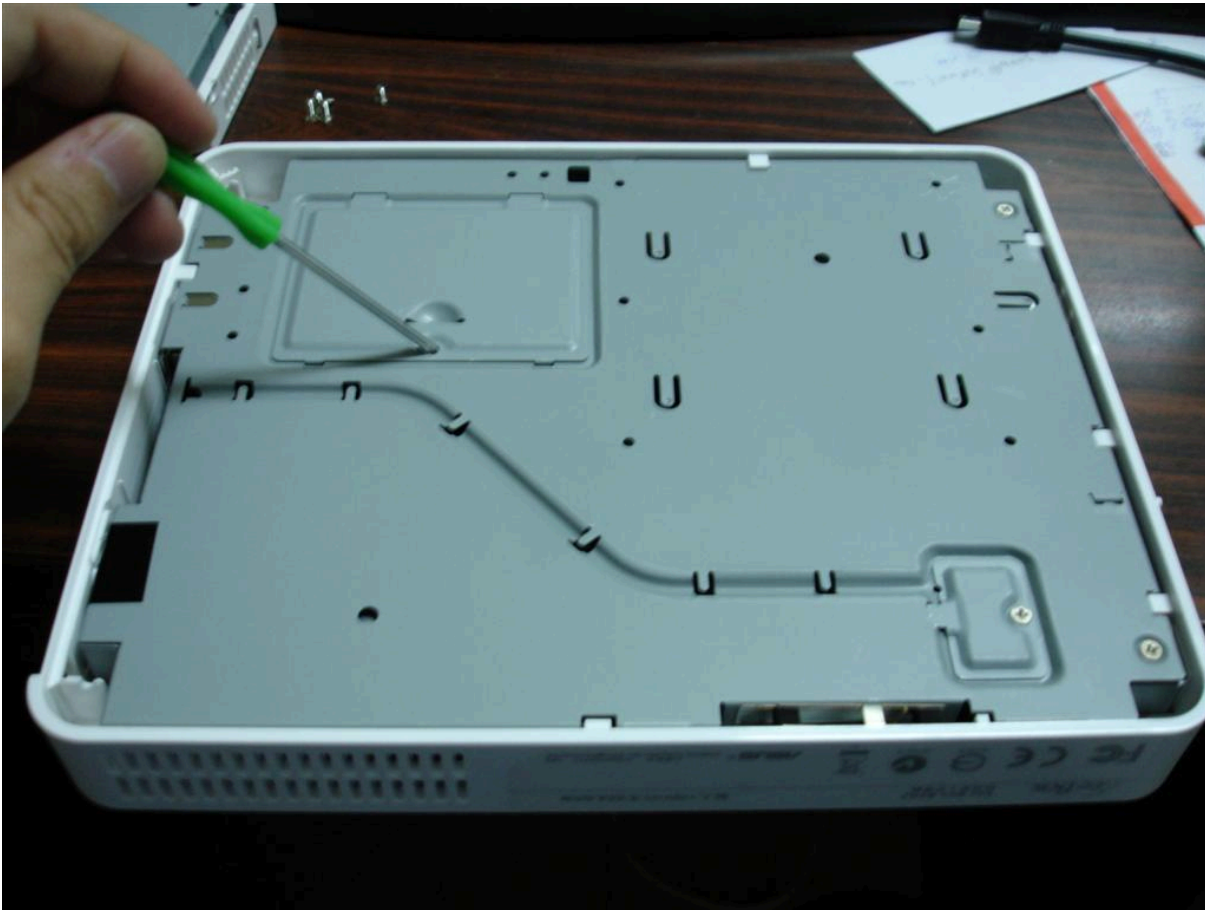
? ?????

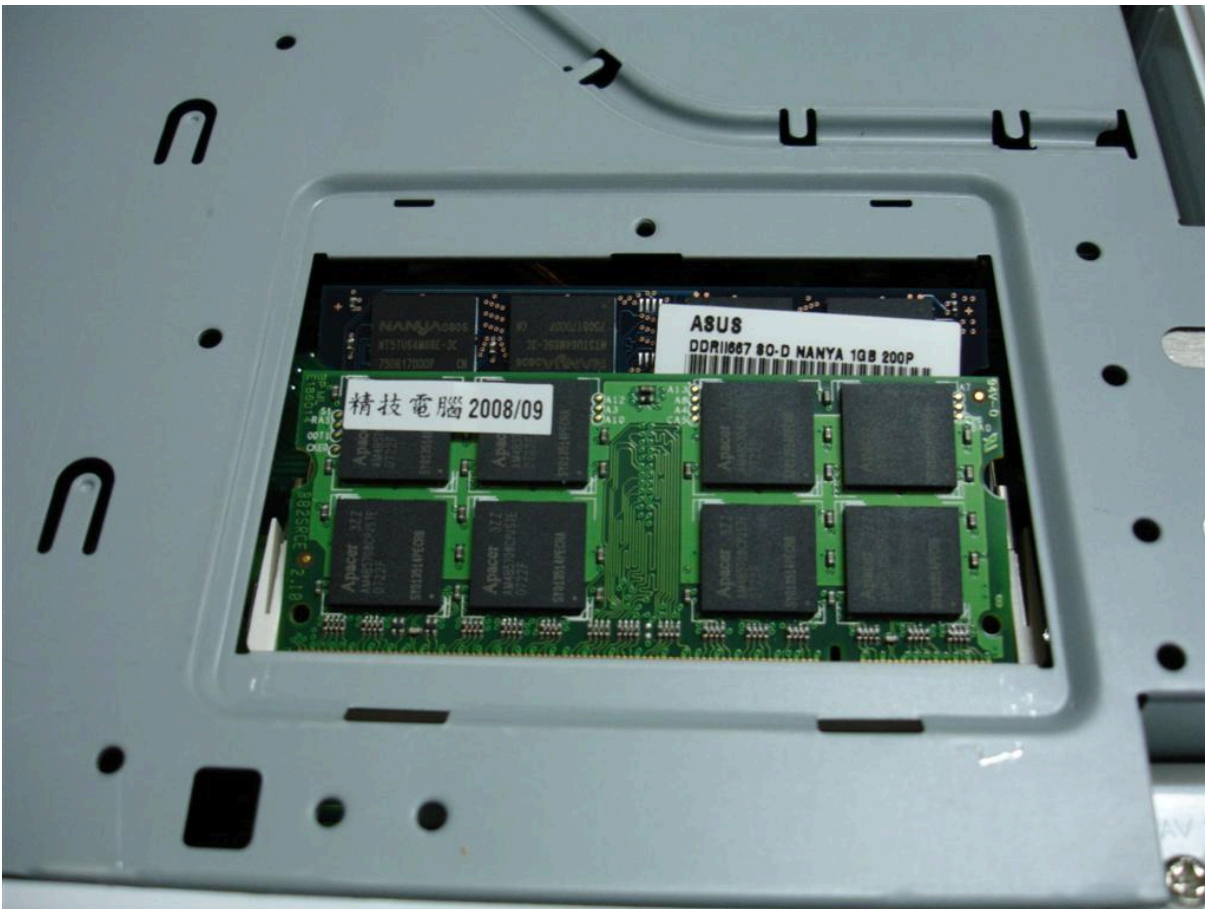
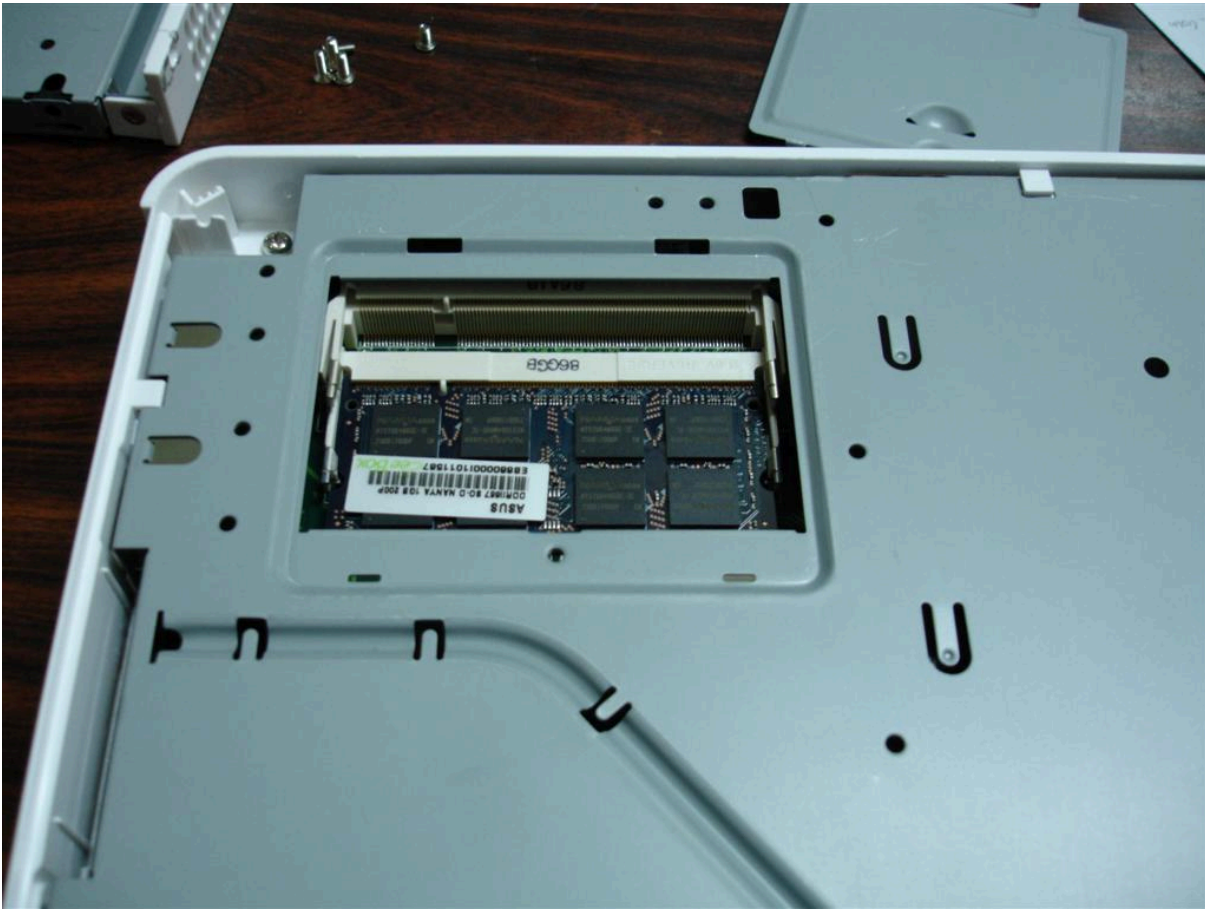




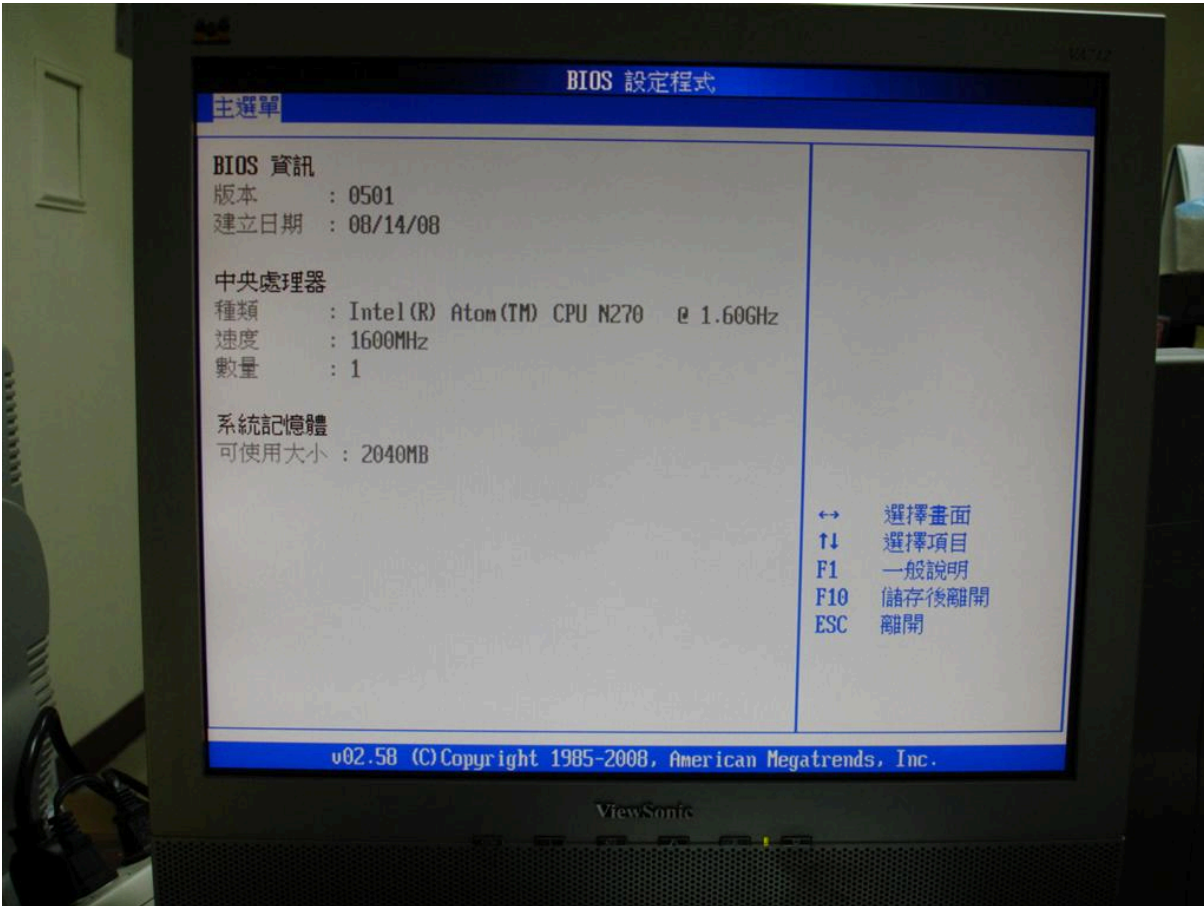












Asterisk ??

????

????

SPA 3000??

[http://wiki.osslab.org.tw/index.php?title=%E5%AF%A6%E9%A9%97%E5%B0%88%E6%A1%88/Asterisk/Hardware/VoIP\\_Gateway/Linksys\\_SPA3000](http://wiki.osslab.org.tw/index.php?title=%E5%AF%A6%E9%A9%97%E5%B0%88%E6%A1%88/Asterisk/Hardware/VoIP_Gateway/Linksys_SPA3000)