

?? MLDoney ??????????????????

????

????? [???? on FreeNAS?](#)

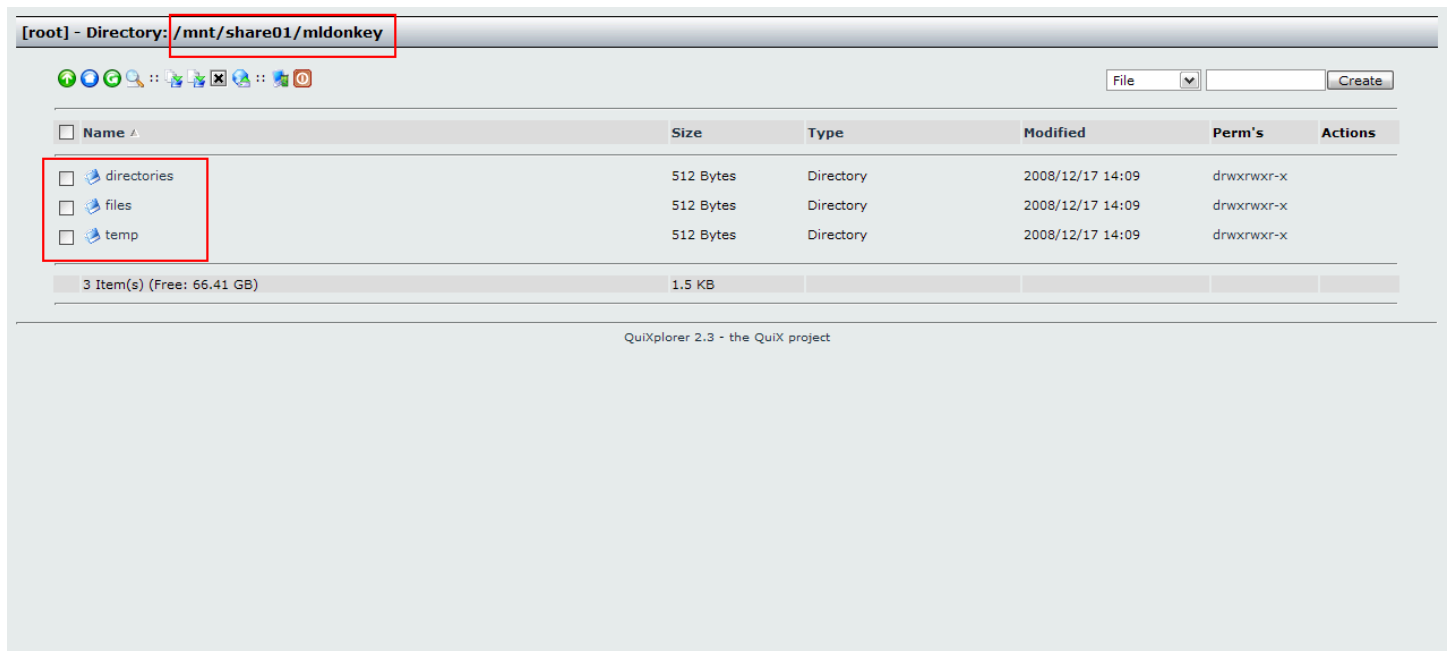
???????????????????????????????? /mnt/share01?

???????? temp ????

?? Advanced -> File Manager ??????????????????????????????

- mldonkey/temp
- mldonkey/files
- mldonkey/directories

??????



?? MLDonkey

?????? <http://eeebox> ip:4080/

Advanced -> Command???? MLDonkey ???

Command = ps ax | grep mlnet

?? mlnet ? PID ?????? kill ??????

command = kill <PID>

FreeNAS
The free network attached storage

System Network Disks Services Access Status Diagnostics Advanced Help

Advanced | Execute command

```
$ ps ax | grep mlnet
1743 ?? S 0:00.00 sh -c ps ax | grep mlnet
1745 ?? R 0:00.00 grep mlnet
1622 con- SN 0:00.54 /usr/local/bin/mlnet-real
```

Command

Download

Upload

PHP Command

FreeNAS © 2005-2008 by Olivier Cochard-Labbe. All rights reserved.

Advanced -> File Editor???????????? IP ????

File path = /root/.mldonkey/downloads.ini

?? 127.0.0.1???????????? IP ?????? 10.1.1.0?

```
allowed_ips = [
  "127.0.0.1";"10.1.1.0/24";]
```

??????????

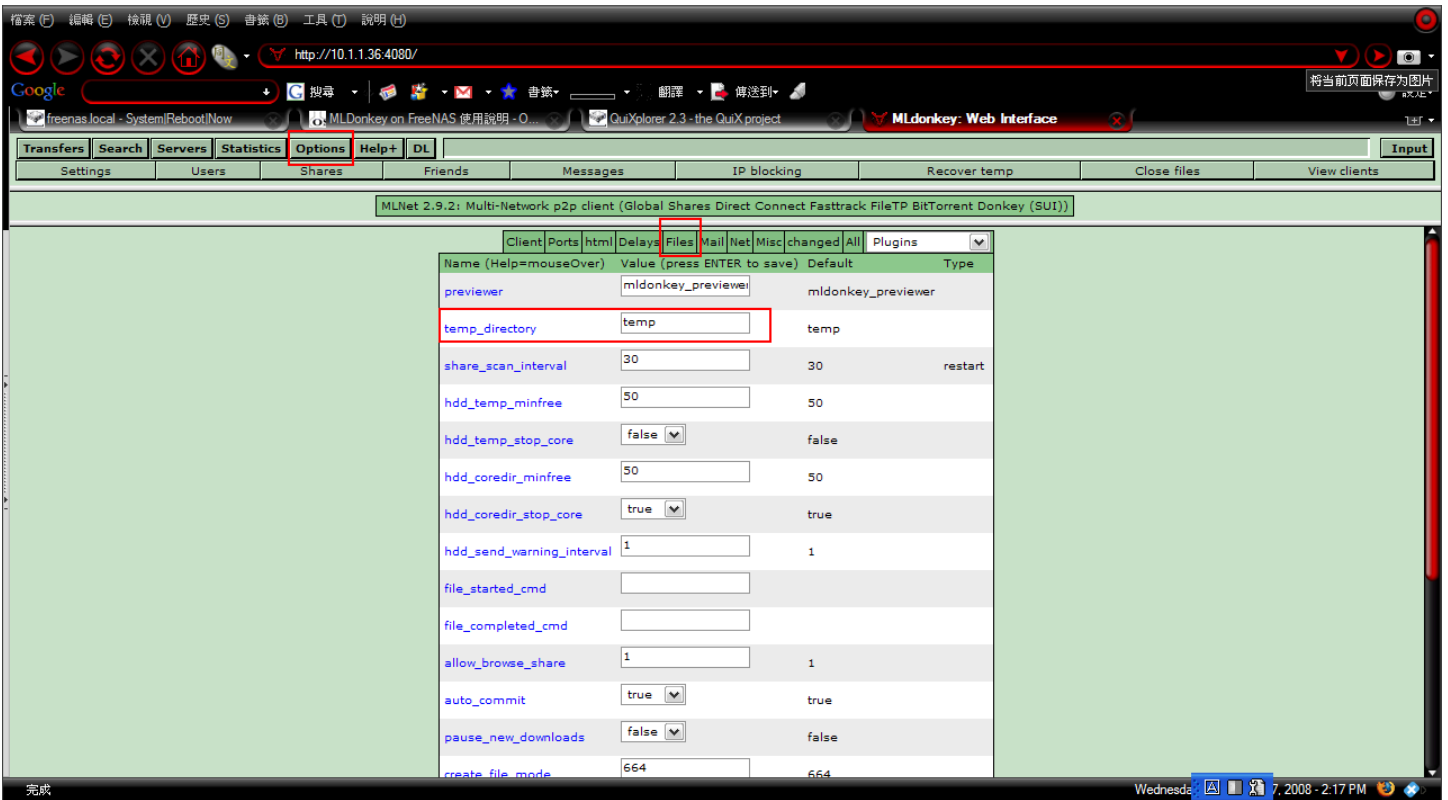
?? MLDonkey ??????????????????

1. ??????

Options -> Files

temp_directory = /mnt/share01/mldonkey/temp

? Enter ???



2. ?????/??

Options -> Shares -> Add Share??????????

0 /mnt/share01/mldonkey/files incoming_files

0 /mnt/share01/mldonkey/directories incoming_directories

?????

<???> <????> <??>

??????????

????????????????

????????????????

?????



???????????????? Unshare?

Unshare	P	Directory	Strategy	used	free	% free	FS
Unshare	0	/mnt/share01/mldonkey/directories	incoming_directories	5.77G	66.41G	91%	ufs
Unshare	0	/mnt/share01/mldonkey/files	incoming_files	5.77G	66.41G	91%	ufs
Unshare	0	shared	all_files	366.6M	127.1M	25%	ufs
Unshare	0	incoming/files	incoming_files	366.6M	127.1M	25%	ufs
Unshare	0	incoming/directories	incoming_directories	366.6M	127.1M	25%	ufs

Help text

System -> Reboot ?????

MLDonkey ??

?? MLDonkey ? Web ?????????????????????? Sancho????????????????????

????????? Sancho??????

????

Host = eeebox IP

Port = 4001

Username = admin

Password = ??

Host setup manager

Core settings
Please specify core settings.

This GUI displays information provided by a core application.
Please specify the username, password, ip address and gui port of your core.

The optional host manager allows you to store core settings for multiple hosts.

Host settings: 10.10.10.125:4001

Host: Default = 127.0.0.1
 Port: Default = 4001
 Username: Default = admin
 Password: Default = <empty>
 Ask for password on connect
 Description: Default = <empty>
 Core protocol: Default = mldonkey

Default(127.0.0.1:4001)
 10.10.10.125:4001

Use ssh2 port forwarding tunnel (advanced option)

SSH host: SSH remote host:
 SSH user: SSH remote port:
 SSH pass: SSH local port:
 SSH port:

SSH forward http preview port

SSH local preview port: SSH remote preview port:

--- Proxy [host:port]:
 Proxy user: Proxy pass:

??????

