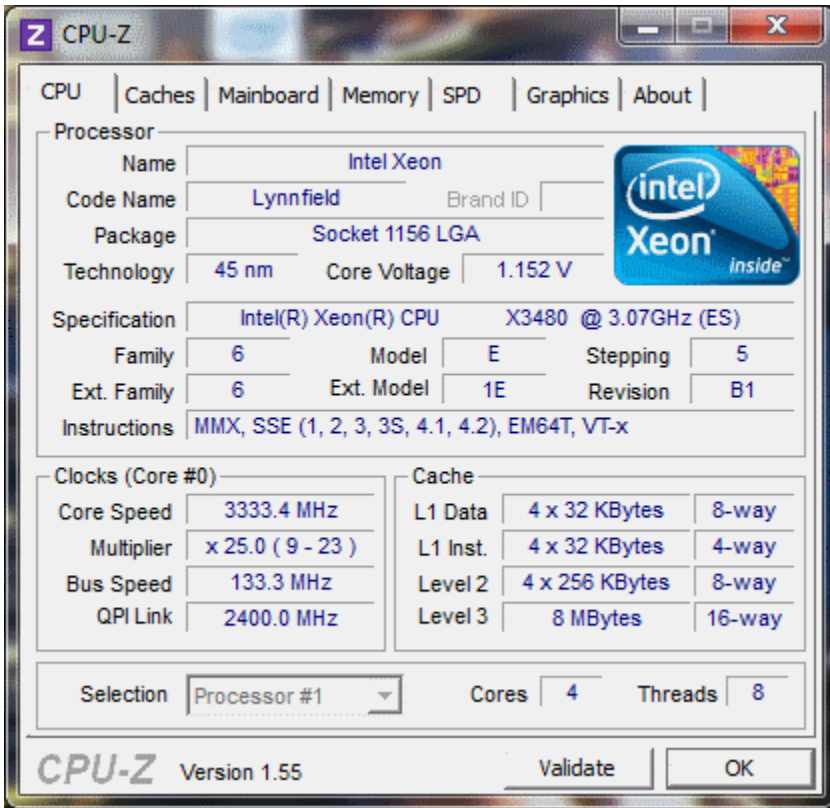


??????CPU(ES??;B1????????)??Xeon 1156??????CPU-Z????????



3.3GHz?????????Intel????????????

Essentials	
Status	Launched
Launch Date	Q2'10
Processor Number	X3480
# of Cores	4
# of Threads	8
Clock Speed	3.06 GHz
Max Turbo Frequency	3.73 GHz
Intel® Smart Cache	8 MB
Bus/Core Ratio	23
DMI	2.5 GT/s
Instruction Set	64-bit
Instruction Set Extensions	SSE4.2
Embedded Options Available	No
Supplemental SKU	No
Lithography	45 nm
Max TDP	95 W
VID Voltage Range	0.6500V-1.4000V
1ku Bulk Budgetary Price	\$612.00
Memory Specifications	
Max Memory Size (dependent on memory type)	32 MB
Memory Types	DDR3-800/1066/1333
# of Memory Channels	2
Max Memory Bandwidth	21 GB/s
Physical Address Extensions	36-bit
ECC Memory Supported	Yes
Graphics Specifications	
Integrated Graphics	No
Expansion Options	
PCI Express Revision	2.0
PCI Express Configurations	1x16, 2x8, 4x4
# of PCI Express Ports	1
Package Specifications	
Max CPU Configuration	1
T _{case}	72.7°C
Package Size	37.5mm x 37.5mm
Processing Die Size	296 mm ²
# of Processing Die Transistors	774 million
Sockets Supported	LGA1156
Halogen Free Options Available	Yes
Advanced Technologies	
Intel® Turbo Boost Technology	Yes
Intel® Hyper-Threading Technology	Yes
Intel® Virtualization Technology (VT-x)	Yes
Intel® Virtualization Technology for Directed I/O (VT-d)	Yes
Intel® Trusted Execution Technology	Yes
AES New Instructions	No
Intel® 64	Yes
Idle States	Yes
Enhanced Intel® Speedstep Technology	Yes
Intel® Demand Based Switching	Yes
Thermal Monitoring Technologies	No
Execute Disable Bit	Yes

????VT-d????DBS??EIST????????????????CPU????????????AES??????

????????????????????

?????Supermicro?UP-Xeon???X8SI6-F



?????IPMI 2.0?????????????????LSI2008 SAS???ROMB?????????Intel 3420?

???????????????

Device Description	
DIMM1: Transcend TS256MKR72V3U	
DIMM3: Transcend TS256MKR72V3U	
Field	Value
Memory Module Properties	
Module Name	Transcend TS256MKR72V3U
Serial Number	00086D19h (426575872)
Manufacture Date	Week 12 / 2010
Module Size	2 GB (2 ranks, 8 banks)
Module Type	Registered DIMM
Memory Type	DDR3 SDRAM
Memory Speed	DDR3-1333 (667 MHz)
Module Width	72 bit
Error Detection Method	ECC
Memory Timings	
@ 666 MHz	9-9-9-24 (CL-RCD-RP-RAS) / 33-74-4-10-5-5 (RC-RFC-RRD-WR-...
@ 592 MHz	8-8-8-22 (CL-RCD-RP-RAS) / 30-66-4-9-5-5 (RC-RFC-RRD-WR-W...
@ 518 MHz	7-7-7-19 (CL-RCD-RP-RAS) / 26-58-4-8-4-4 (RC-RFC-RRD-WR-W...
@ 444 MHz	6-6-6-16 (CL-RCD-RP-RAS) / 22-49-3-7-4-4 (RC-RFC-RRD-WR-W...
Memory Module Features	
<input checked="" type="checkbox"/> Auto Self Refresh	Supported
<input checked="" type="checkbox"/> Extended Temperature Range	Supported
<input type="checkbox"/> Extended Temperature Refre...	Not Supported
<input type="checkbox"/> On-Die Thermal Sensor Rea...	Not Supported

??DDR3-1333 REG. 2GB x2?

????????

CrystalMark 2004R3

	Single Core	Multi Core
CrystalMark	54974	152505
ALU	17009	55953
Fibonacci	6876	21753
Napierian	4085	13559
Eratosthenes	2000	6961
QuickSort	4026	13658
FPU	15790	53456
MikoFPU	1750	6488
RandMeanSS	8437	27387
FFT	2876	9960
Mandelbrot	2705	9599
MEM	22175	43096
Read	6852.63 MB/s (6852)	16437.56 MB/s (16437)
Write	6844.05 MB/s (6844)	7813.58 MB/s (7813)
Read/Write	4527.13 MB/s (4527)	7802.64 MB/s (7802)
Cache	39308.42 MB/s (3930)	110221.99 MB/s (11022)

CINEBENCH R11.5

Multi Core

Single Core

CINEBENCH RELEASE 11.5

OpenGL — Run ✓ Ref. Match —

CPU **5.67 pts** Run ✓

CPU (Single Core) — Run ✓

MP Ratio —

Your System

Processor Intel Xeon CPU X3480

Cores x GHz 4 Cores, 8 Threads @ 3.07 GHz

OS Windows 7, 64 Bit, Professional Edition (build 7600)

CB Version 64 Bit

GFX Board GeForce 210/PCI/SSE2

Info

Ranking CPU Details

1. 8C/16T @ 3.33 GHz, Intel Xeon CPU W5590	11.69
2. 8C/16T @ 2.92 GHz, Intel Xeon CPU X5570	10.33
3. 12C/12T @ 2.62 GHz, AMD Opteron 2435	7.95
4. 4C/8T @ 3.07 GHz, Intel Xeon CPU X3480	5.67
5. 4C/8T @ 3.20 GHz, Intel Core i7 CPU 960	5.48

Legend: Your Score (orange), Identical System (brown)

CINEBENCH RELEASE 11.5

OpenGL — Run ✓ Ref. Match —

CPU — Run ✓

CPU (Single Core) **1.23 pts** Run ✓

MP Ratio —

Your System

Processor Intel Xeon CPU X3480

Cores x GHz 4 Cores, 8 Threads @ 3.07 GHz

OS Windows 7, 64 Bit, Professional Edition (build 7600)

CB Version 64 Bit

GFX Board GeForce 210/PCI/SSE2

Info

Ranking CPU (Single Core) Details

1. 4C/8T @ 3.07 GHz, Intel Xeon CPU X3480	1.23
2. 8C/16T @ 3.33 GHz, Intel Xeon CPU W5590	1.20
3. 4C/8T @ 2.80 GHz, Intel Core i7 CPU 860	1.13
4. 8C/16T @ 2.92 GHz, Intel Xeon CPU X5570	1.10
5. 4C/8T @ 3.20 GHz, Intel Core i7 CPU 960	1.10

Legend: Your Score (orange), Identical System (brown)

EVEREST??Cache?Memory???????????

Lavalys EVEREST Cache & Memory Benchmark

	Read	Write	Copy	Latency
Memory	14943 MB/s	13834 MB/s	17158 MB/s	56.6 ns
L1 Cache	58114 MB/s	57345 MB/s	117474 MB/s	1.1 ns
L2 Cache	38284 MB/s	34554 MB/s	43788 MB/s	2.8 ns
L3 Cache	27625 MB/s	19541 MB/s	25890 MB/s	3.7 ns
CPU Type	QuadCore Intel Xeon (Lynnfield, LGA1156)			
CPU Clock	3580.6 MHz (original: 3066 MHz, overclock: 17%)			
CPU FSB	132.6 MHz (original: 133 MHz)			
CPU Multiplier	27x		CPU Stepping	B1
Memory Bus	663.1 MHz		DRAM:FSB Ratio	5:1
Memory Type	Dual Channel DDR3-1326 SDRAM (9-9-9-24 CR1)			
Chipset	Intel Ibex Peak 3420, Intel Lynnfield			
Motherboard	Unknown			

EVEREST v5.50.2100 / BenchDLL 2.5.292.0 (c) 2003-2010 Lavalys, Inc.

Save Start Benchmark Close

???????x3480?????????..?