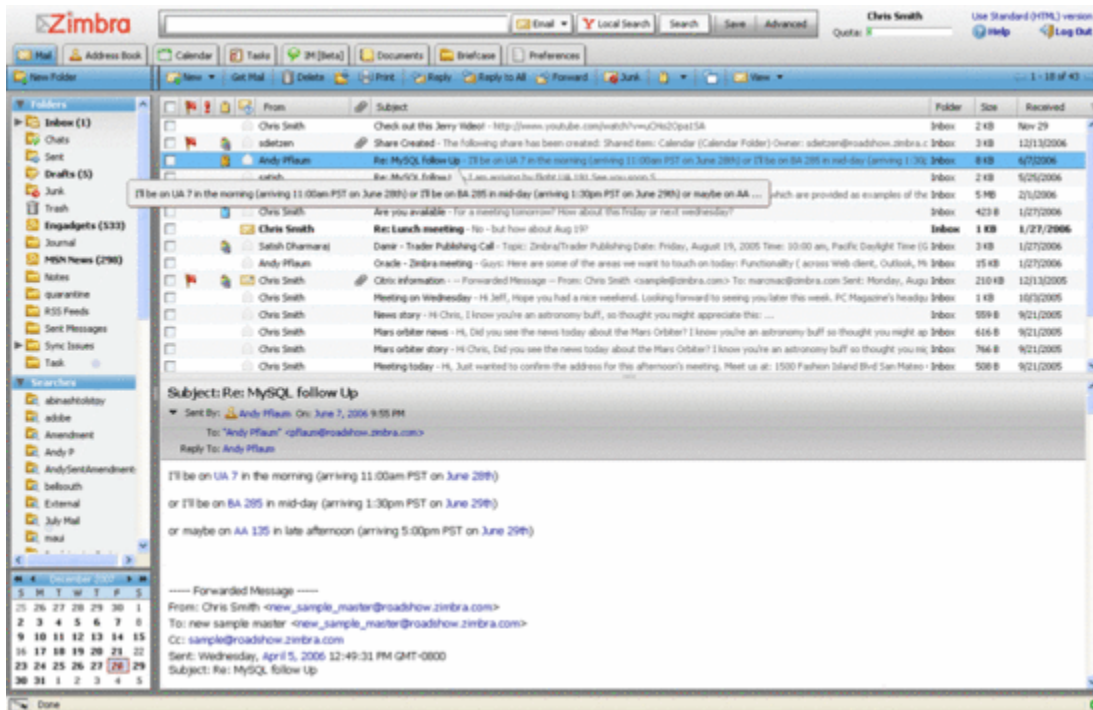


<http://www.zimbra.com/>

Zimbra ?????????????????????? MS Exchange Server?



?????

Ubuntu 8.04

?????

```
apt-get install libpcrc3 libgmp3c2 libstdc++5 libltdl3
```

?? Zimbra for Ubuntu 8.04 ??

????

```
tar -xzf zcs-5.0.12_GA_2789.UBUNTU8.20090126112326.tgz
```

```
cd zcs-5.0.12_GA_2789.UBUNTU8.20090126112326
```

```
./install.sh
```

Main menu

1) Common Configuration:

2) zimbra-ldap: Enabled

3) zimbra-store: Enabled

+Create Admin User: yes

+Admin user to create: admin@osslab.local

***** +Admin Password UNSET

+Enable automated spam training: yes

+Spam training user: spam.wdzdlajlj@osslab.local

+Non-spam(Ham) training user: ham.s1holflq_g@osslab.local

+Global Documents Account: wiki@osslab.local

+SMTP host: zimbra.osslab.local

```

+Web server HTTP port:      80
+Web server HTTPS port:    443
+Web server mode:          http
+IMAP server port:         143
+IMAP server SSL port:     993
+POP server port:          110
+POP server SSL port:      995
+Use spell check server:   yes
+Spell server URL:         http://zimbra.osslab.local:7780/aspell.php
+Configure store for use with reverse mail proxy: FALSE
+Configure store for use with reverse web proxy: FALSE

```

```

4) zimbra-mta:              Enabled
5) zimbra-snmp:             Enabled
6) zimbra-logger:          Enabled
7) zimbra-spell:           Enabled
8) Default Class of Service Configuration:
r) Start servers after configuration   yes
s) Save config to file
x) Expand menu
q) Quit

```

Address unconfigured (**) items (? - help)

```

????? *?(???????)????????????3????4????????????r ??????a ?????

```

```

????? LDAP ??????????????????

```

```

/opt/zimbra/libexec/zmsetup.pl

```

```

???? SSL ? WebMail ??????????????????

```

```

su - zimbra
zmtlsctl https

```

```

?????

```

```

//?? Zimbra ???

```

```

su - zimbra
zmcontrol status

```

```

//?? Zimbra ??

```

```

cd <zimbra_install_source>
./install.sh --uninstall

```

