

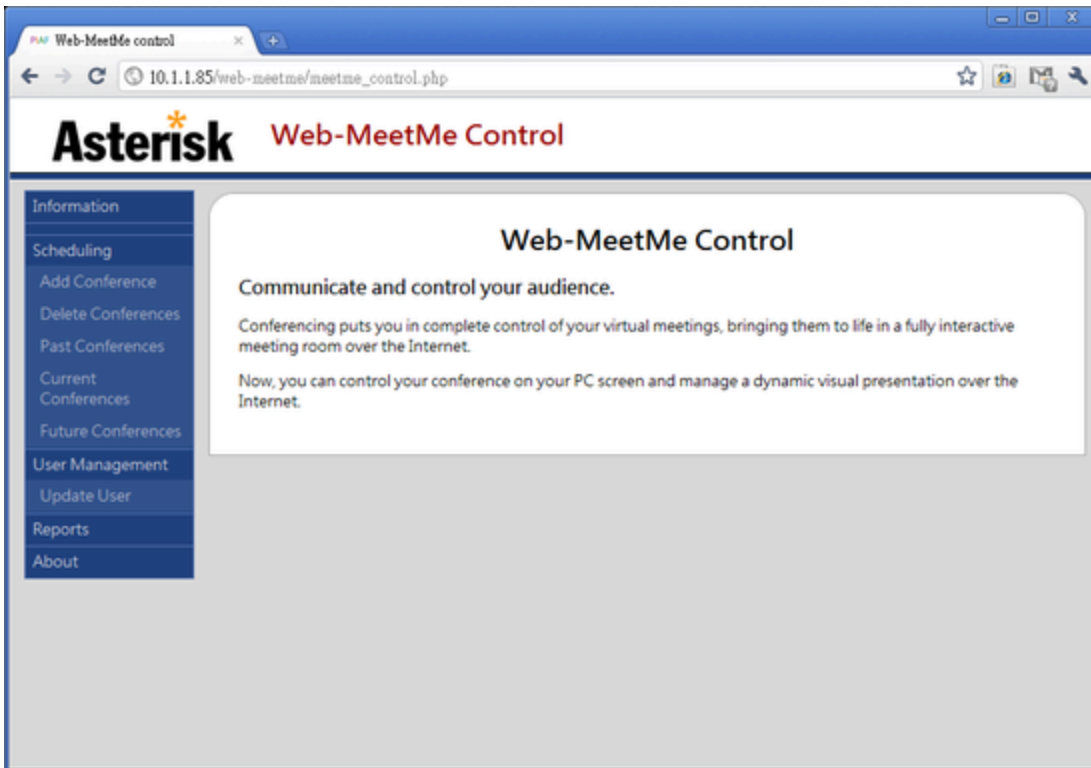
Web-MeetMe ????? Asterisk ??????????????

????? <http://sourceforge.net/projects/web-meetme/>

????

1. Conference number conflict avoidance
2. Recurring conferences
  - ? Daily, weekly or bi-weekly
3. Enforces a user password if a admin password is set
4. Seperate views for past, current and future conferences
5. Editing future conferences
  - ? Includes a series of conferences
6. Deleting past conferences
7. CDR-like view of past conferences
  - ? Includes a link to conference recordings
8. One click features to
  - ? Extend an active conference (time)
  - ? Kick out all participants
  - ? Out-call to include participants
9. Optional early join features
  - ? fuzzystart allows a caller to enter a room early (in seconds, set in cbmysql.conf)
  - ? earlyalert notifies a call that their conference has not yet started, if they enter a valid conference number and the conference is scheduled to start soon.(in seconds, set in cbmysql.conf)

????



????

?? ODBC

?? /etc/odbc.ini

[MySQL-Asterisk]

Description = ODBC for MySQL

Driver = MySQL

Server = 127.0.0.1

Database = meetme

Port = 3306

Socket = /tmp/mysql.sock

Option =

Stmt =

Trace = yes

TraceFile = /tmp/odbc.log

?? /etc/asterisk/res\_odbc.conf

[meetme]

dsn => MySQL-Asterisk

username => <db-username>

password => <db-password>

pre-connect => yes

?? /etc/asterisk/extconfig.conf

meetme => odbc,meetme,booking

?? /etc/asterisk/cdr\_adaptive\_odbc.conf

[wmm]

connection=meetme ;Note that this matches res\_odbc.conf  
table=cdr

?? /etc/asterisk/cdr.conf

endbeforehexten=no

??MySQL??

????? meetme

#mysql -uroot -p  
mysql> create database meetme;

????? schema

#cd /var/www/html/web-meetme/  
#cd cbmysql/  
#mysql -uroot -p meetme < ./db-table-create-v7.txt

???????

#mysql -uroot -p meetme < ./db-admin-user-create.txt

Tips:

? ?????? admin@localhost, ???wmpw  
? ???? LDAP ??????????

?? **Web-MeetMe**

?? /web-meetme/lib/database.php

\$database = 'meetme';  
\$host = 'localhost';  
\$username = 'db\_user';  
\$password = 'db\_pass';

?? /etc/asterisk/manager\_custom.conf

```
[MeetMe]
secret = ami_pass
read = call
write = command,originate

?? /web-meetme/phpagi/phpagi.example.conf
```

```
[asmanager]
# server to connect to
server=localhost
```

```
# default manager port
port=5038
```

```
#username for login
username=MeetMe
```

```
#password for login
secret=ami_pass
```

```
???????? LDAP ??????????
?? /web-meetme/lib/defines.php
```

```
// Comment out the following lines to disable authentication
define ("AUTH_TYPE", "sqldb"); // adLDAP or sqldb
```