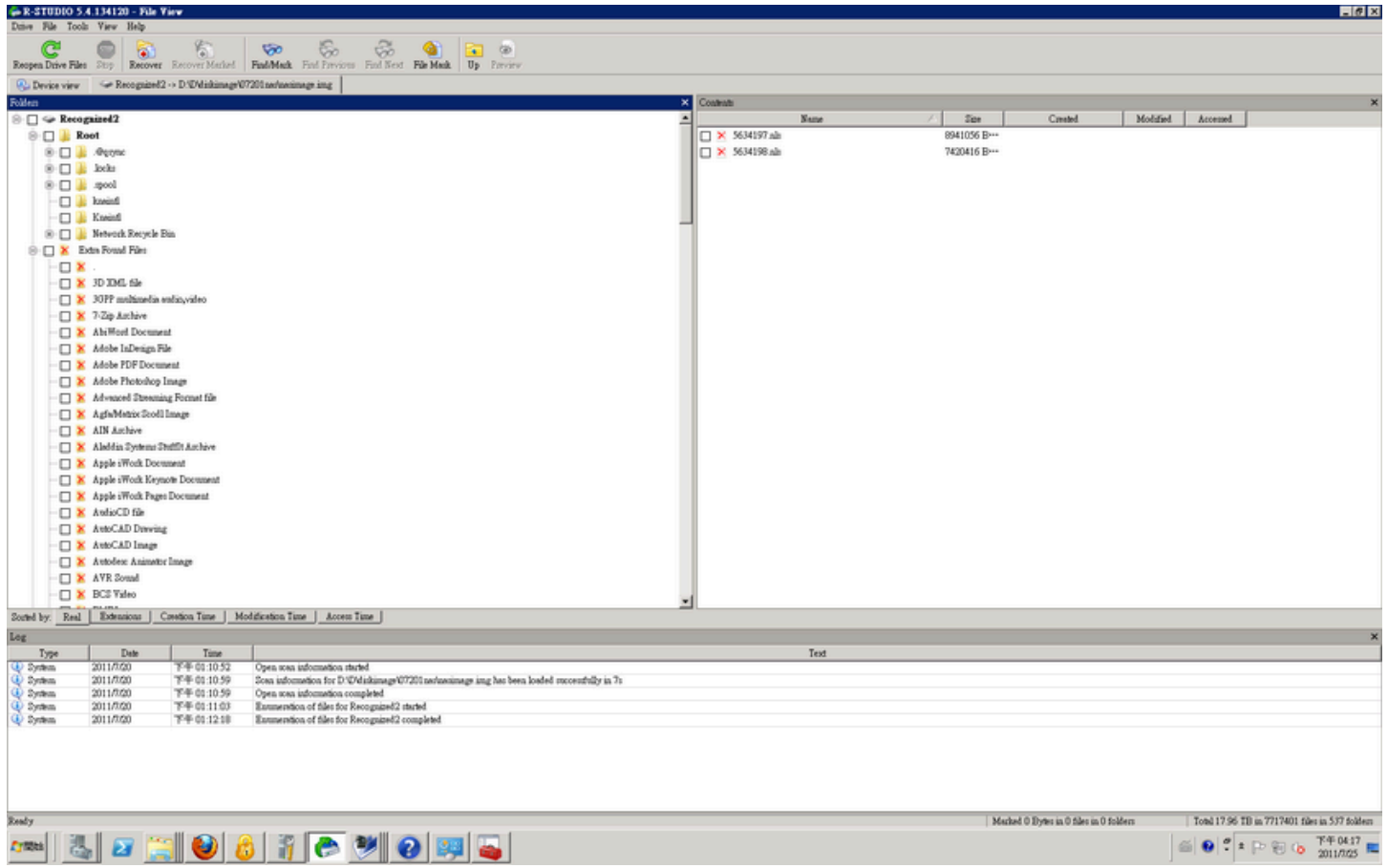


???????NAS ??

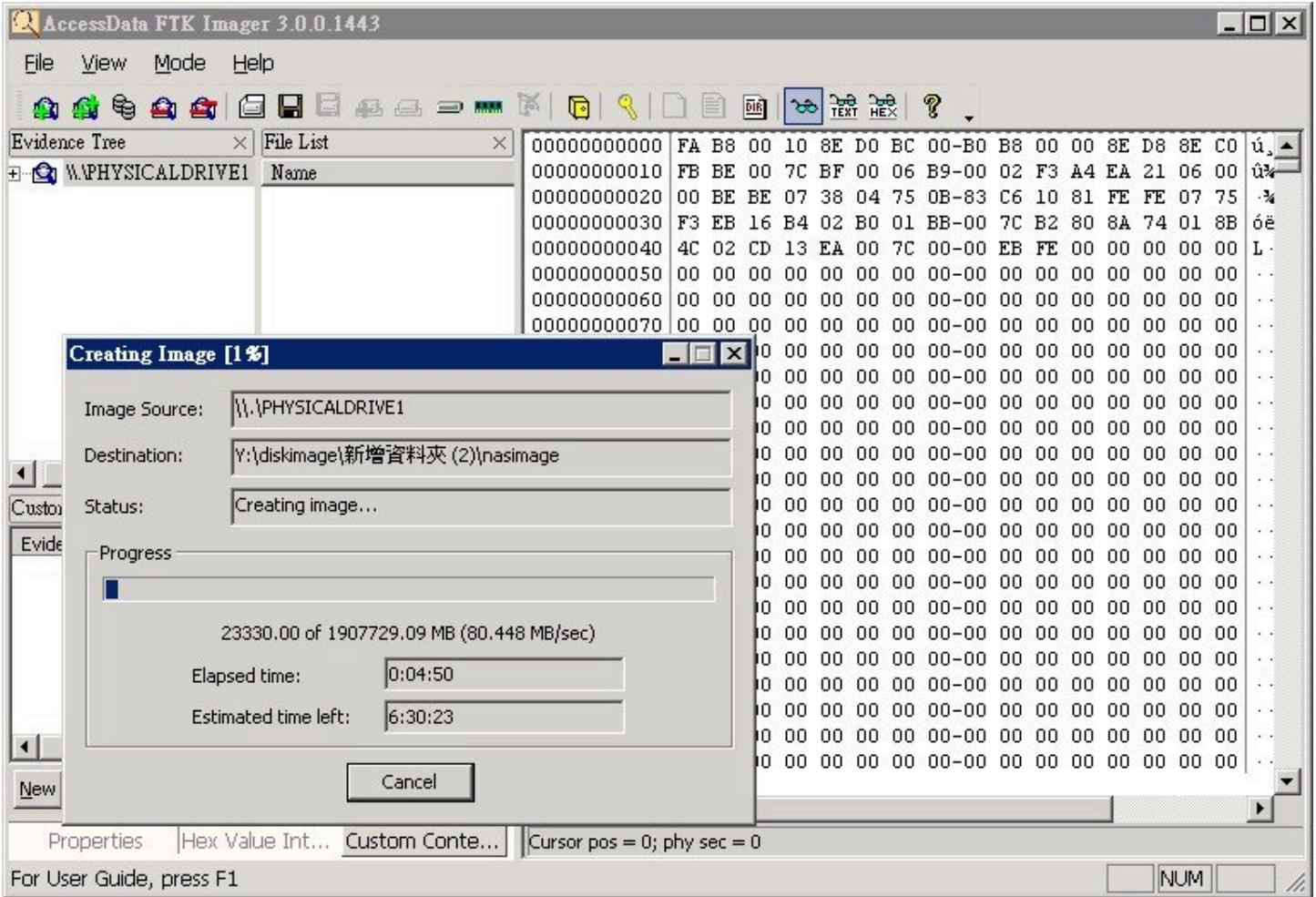
MIS??OSSLAN ?, OSSLab??? RS ?????
 ????

GPTPart0			512 Bytes	1.82 TB
Recognized 1		Ext3	20 KB	517.62 MB
Recognized 2		Ext4	1.01 GB	1.82 TB
Recognized 3		Ext3	1.82 TB	320 MB
Extra Found Files				

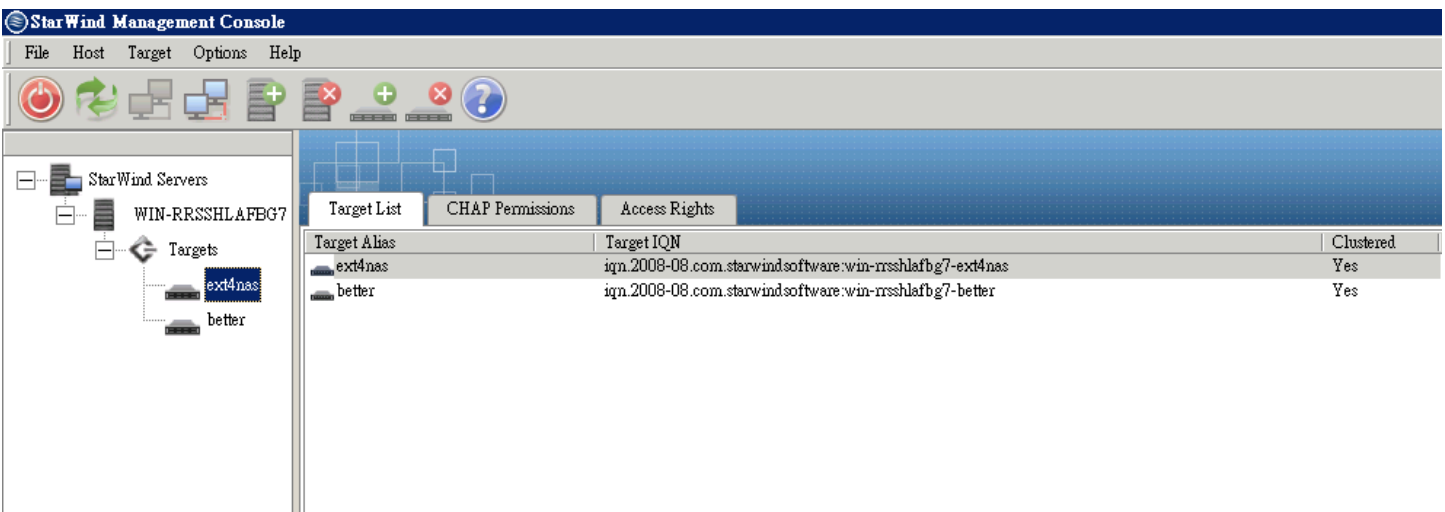


The screenshot shows the R-STUDIO 5.4.1.34120 File View interface. The main window displays a file system tree for 'Recognized2' with a list of files and folders. A 'Contrast' window is open, showing a list of files with columns for Name, Size, Created, Modified, and Accessed. The file list includes two files named '5634197.ah' and '5634198.ah' with sizes of 8941056 B and 7420416 B respectively. The bottom status bar shows 'Total 17.96 TB in 7717401 files in 537 folders'.

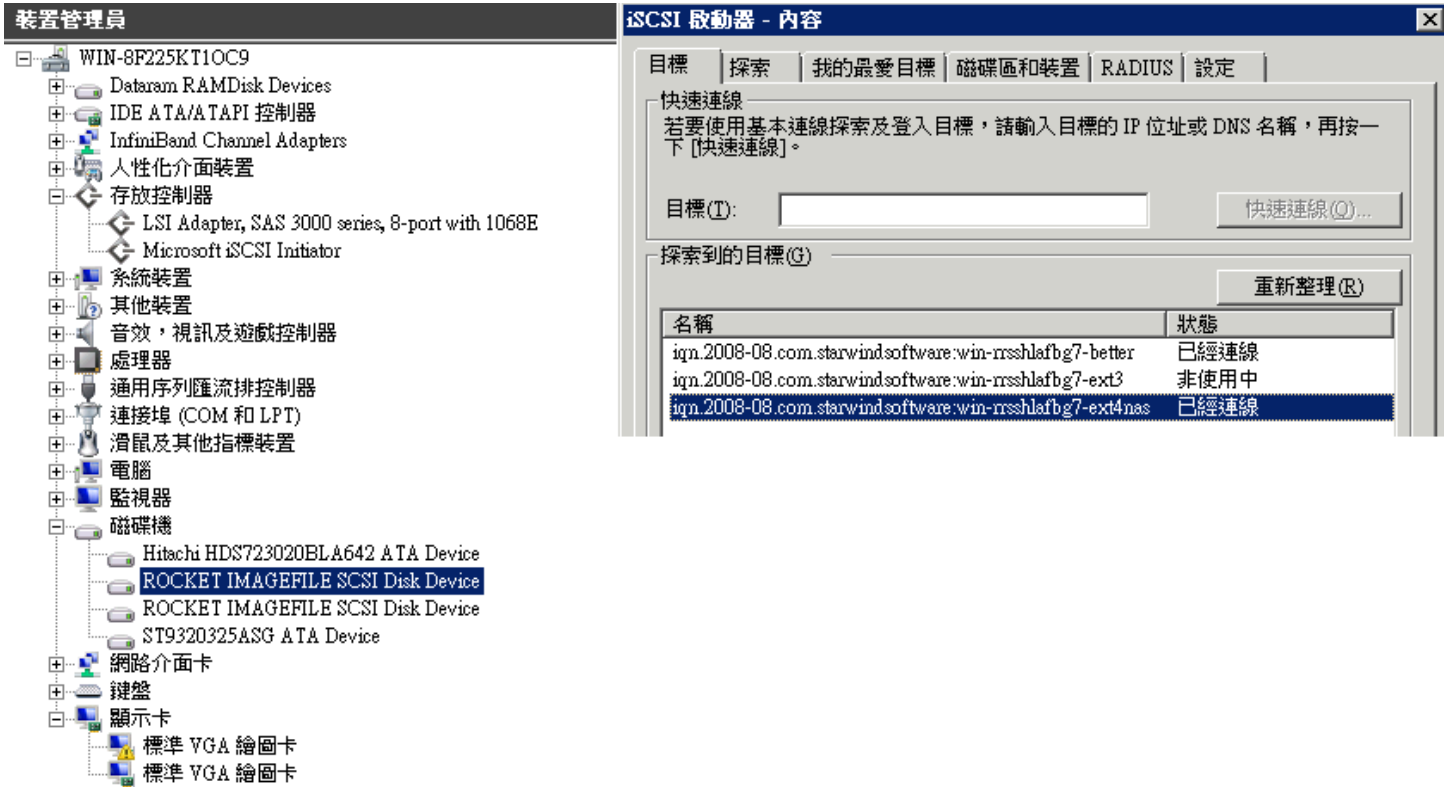
3.???????



4. starwind ?DD image file ??iscsi lun



??lun



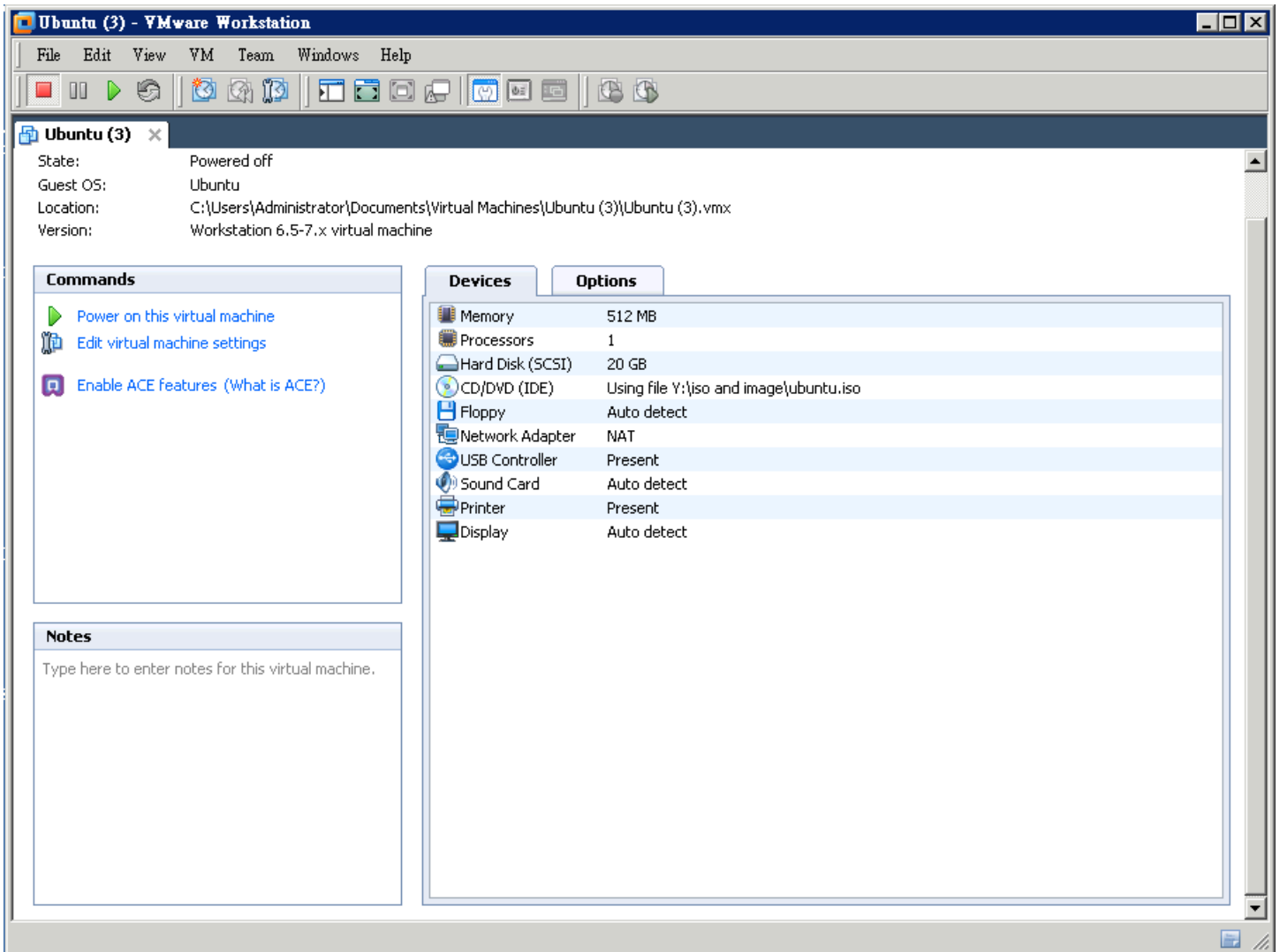
6.???workstysion?? ??

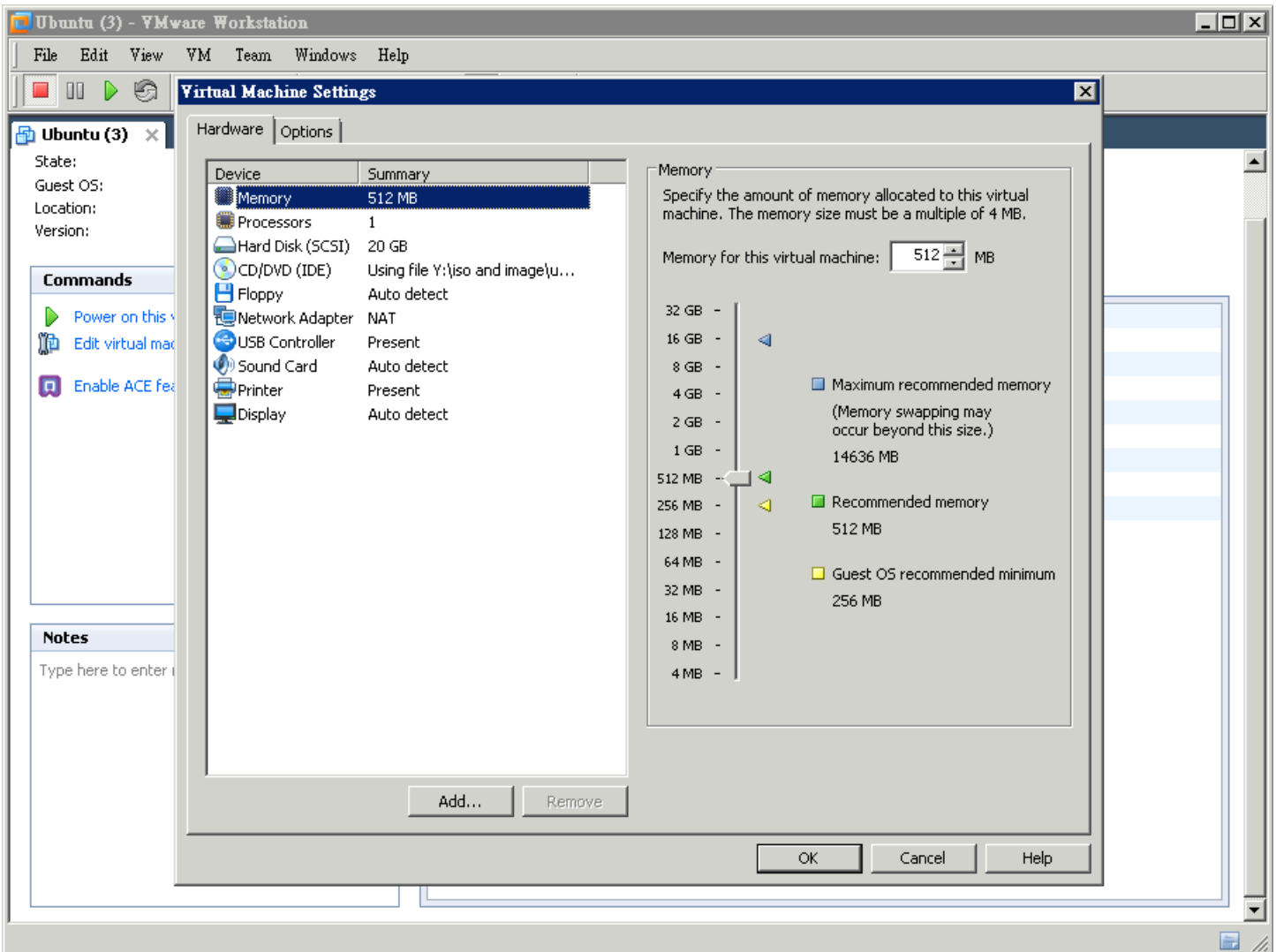
ubuntu id :davnid

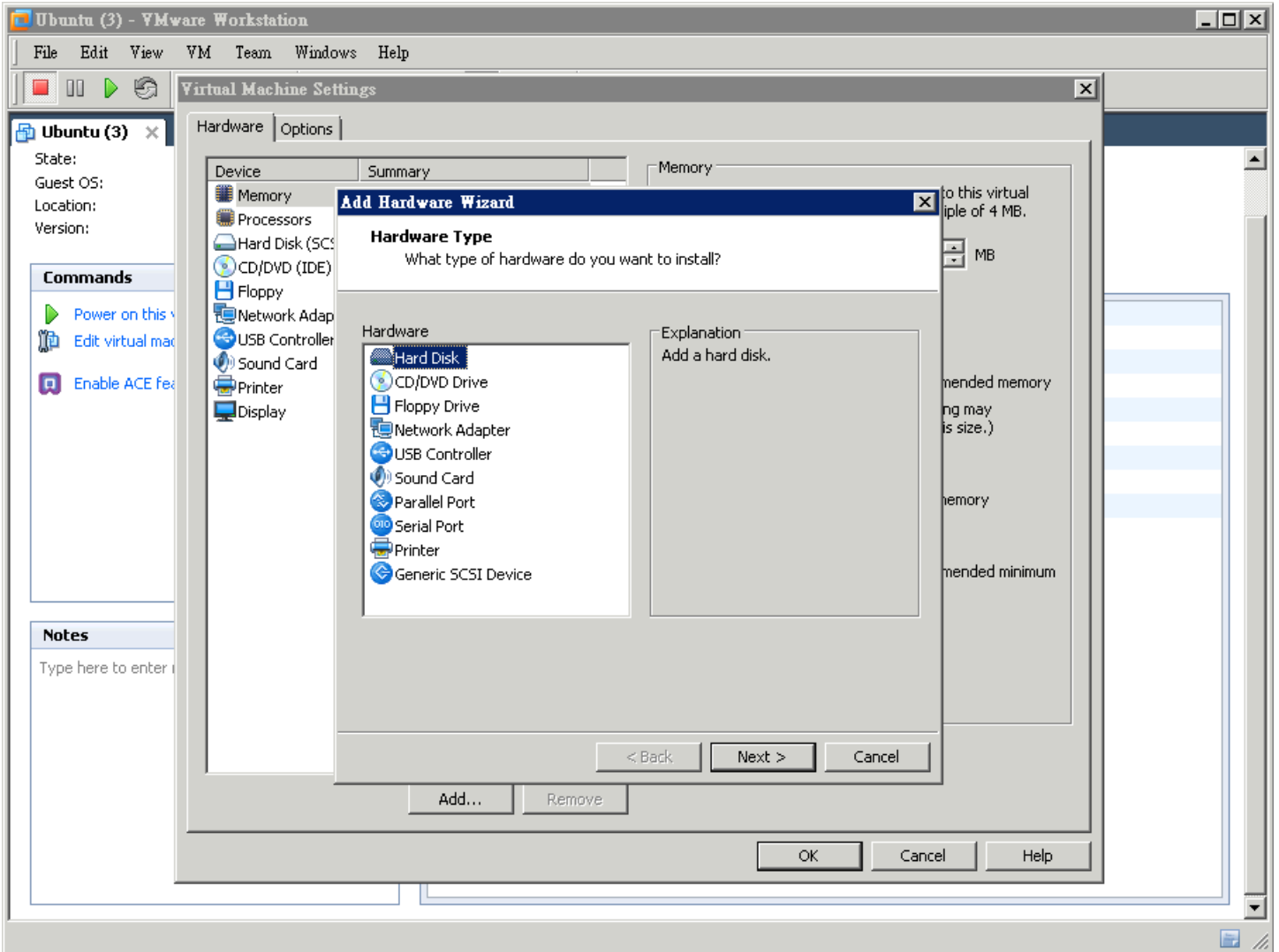
pass:qwe123

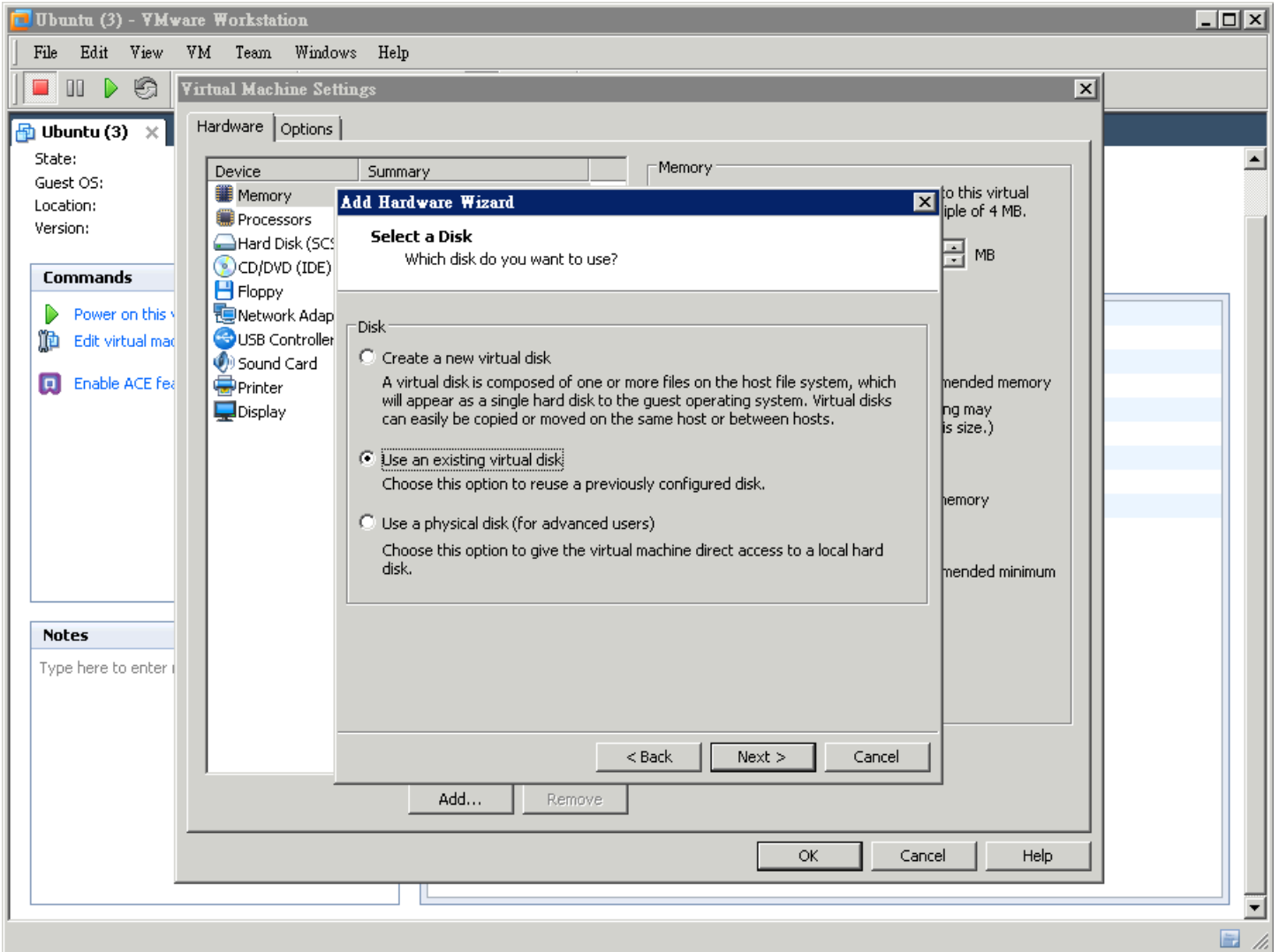
Devices	Options
Memory	512 MB
Processors	1
Hard Disk (SCSI)	20 GB
Hard Disk 2 (SCSI)	Using device \\.\PhysicalDrive3
Hard Disk 3 (SCSI)	Using device \\.\PhysicalDrive4
CD/DVD (IDE)	Using file Y:\iso and image\ubuntu.iso
Floppy	Auto detect
Network Adapter	NAT
USB Controller	Present
Sound Card	Auto detect
Printer	Present
Display	Auto detect

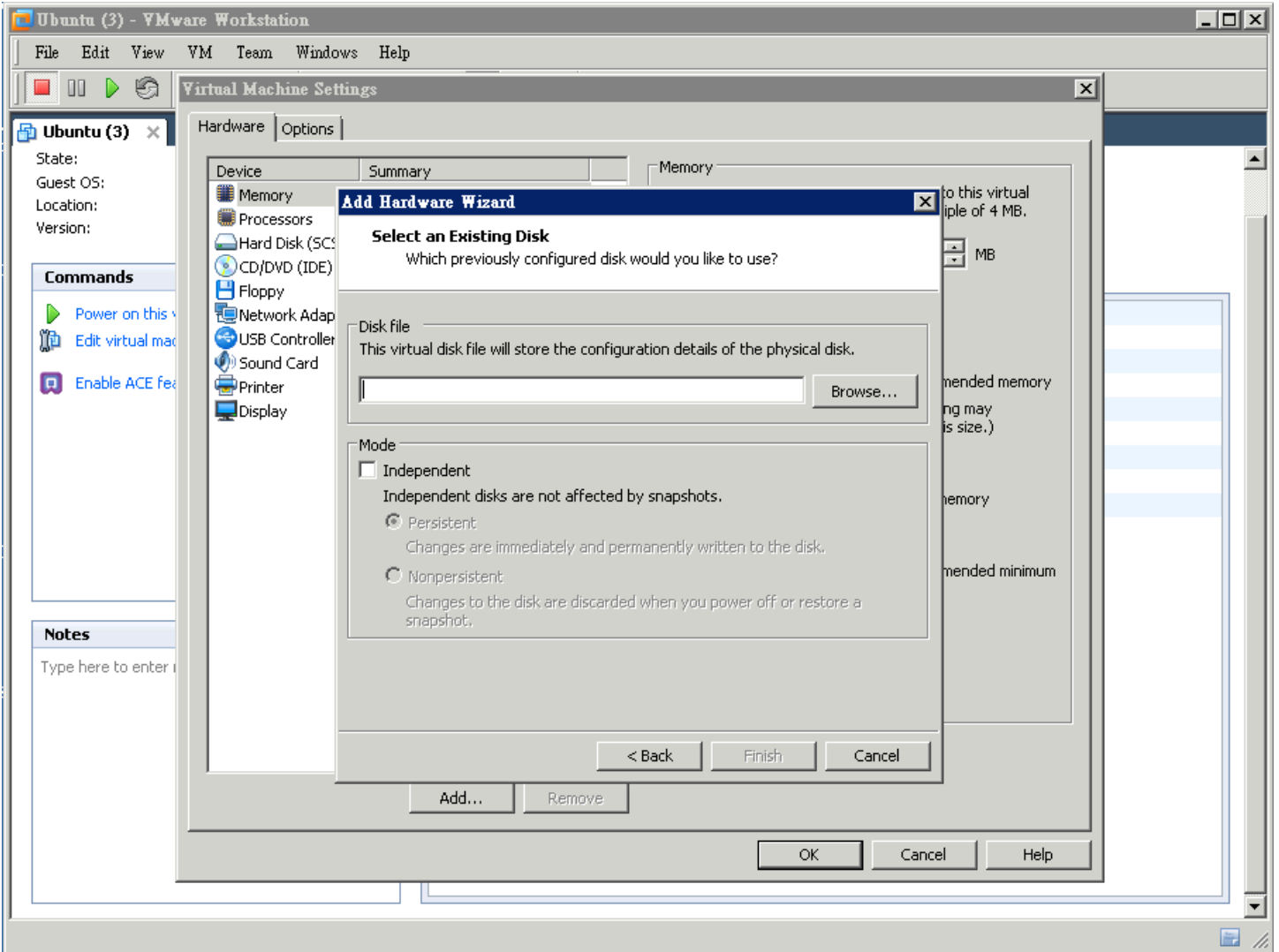
5.photorec

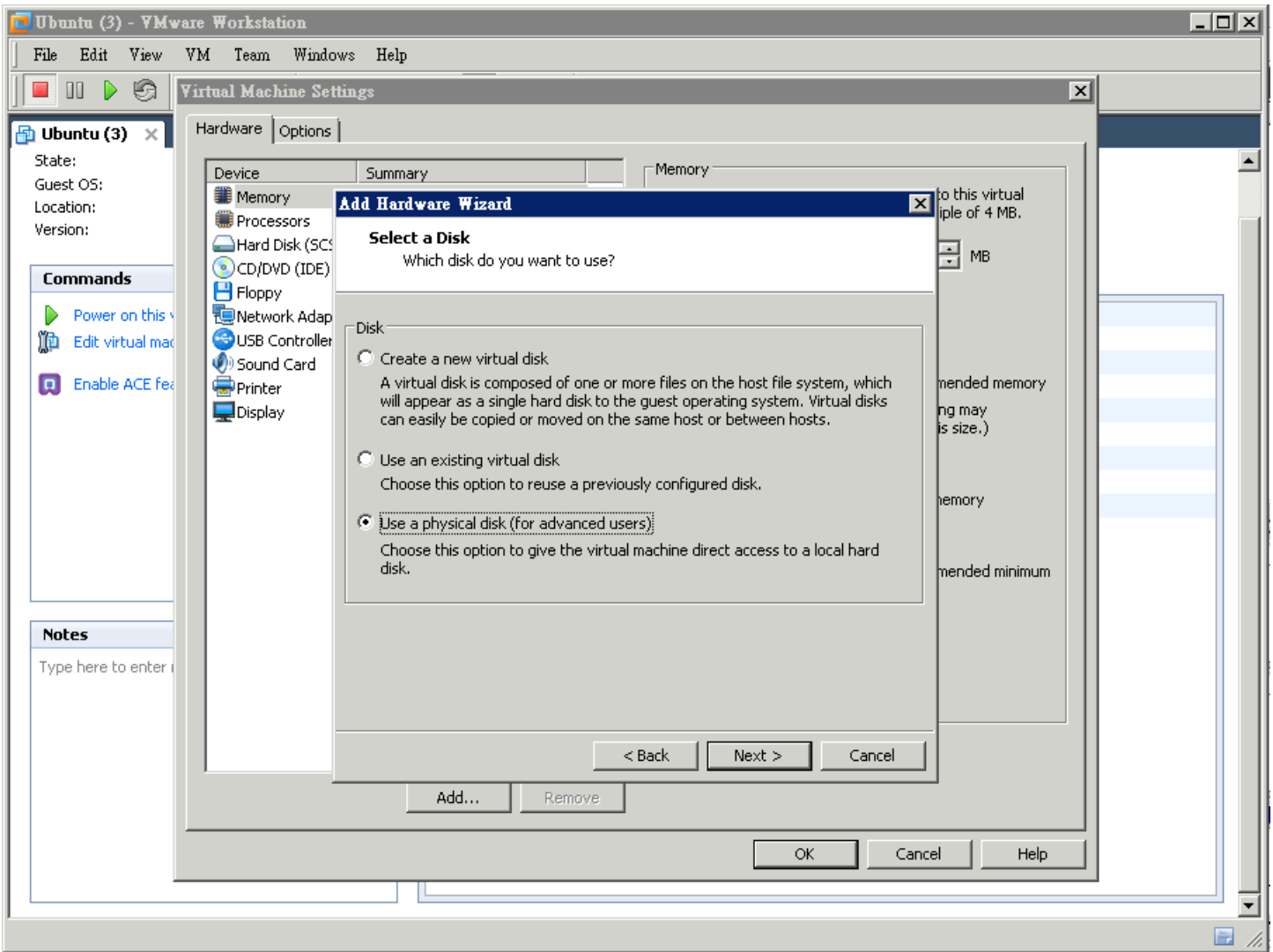


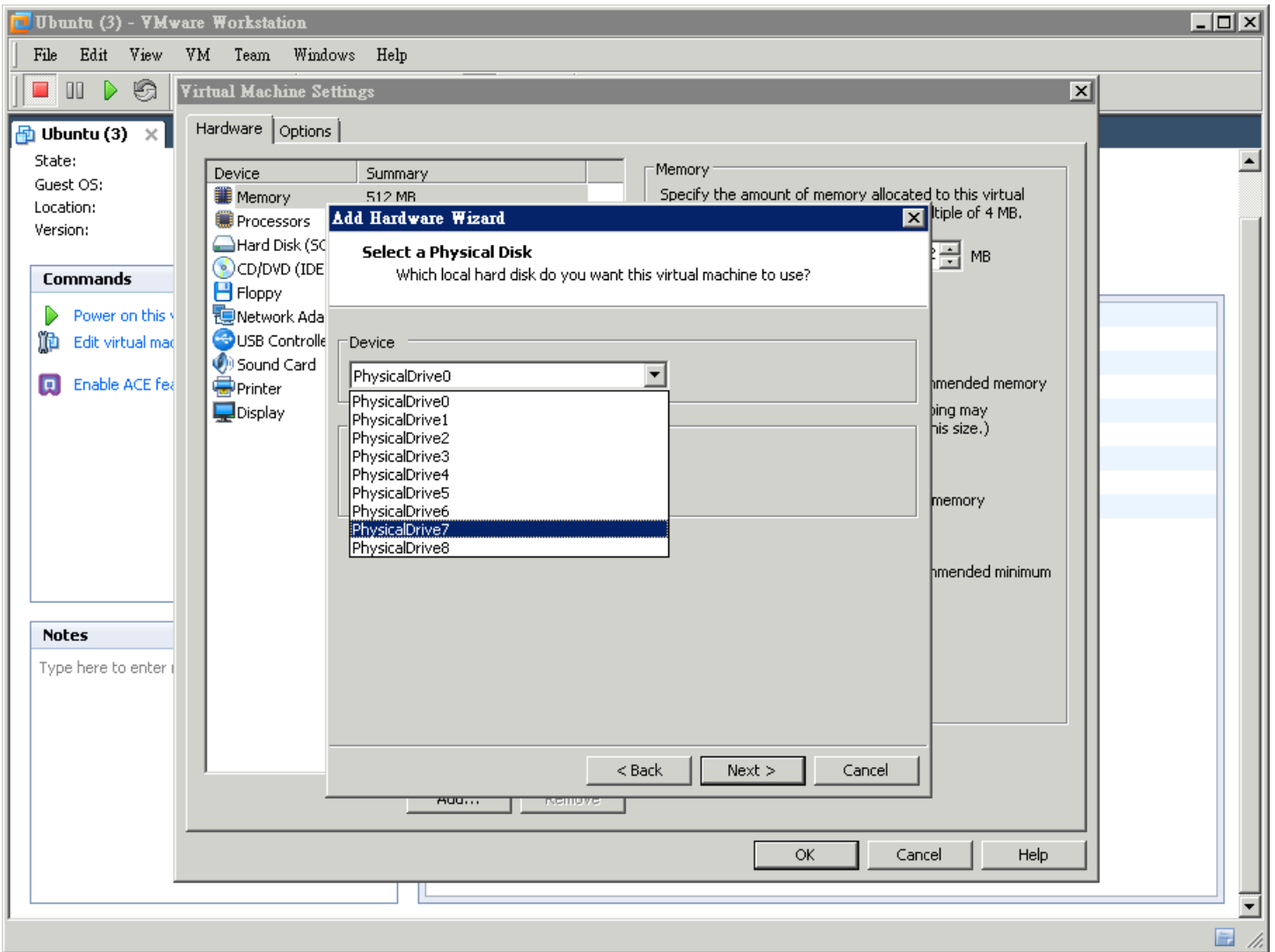


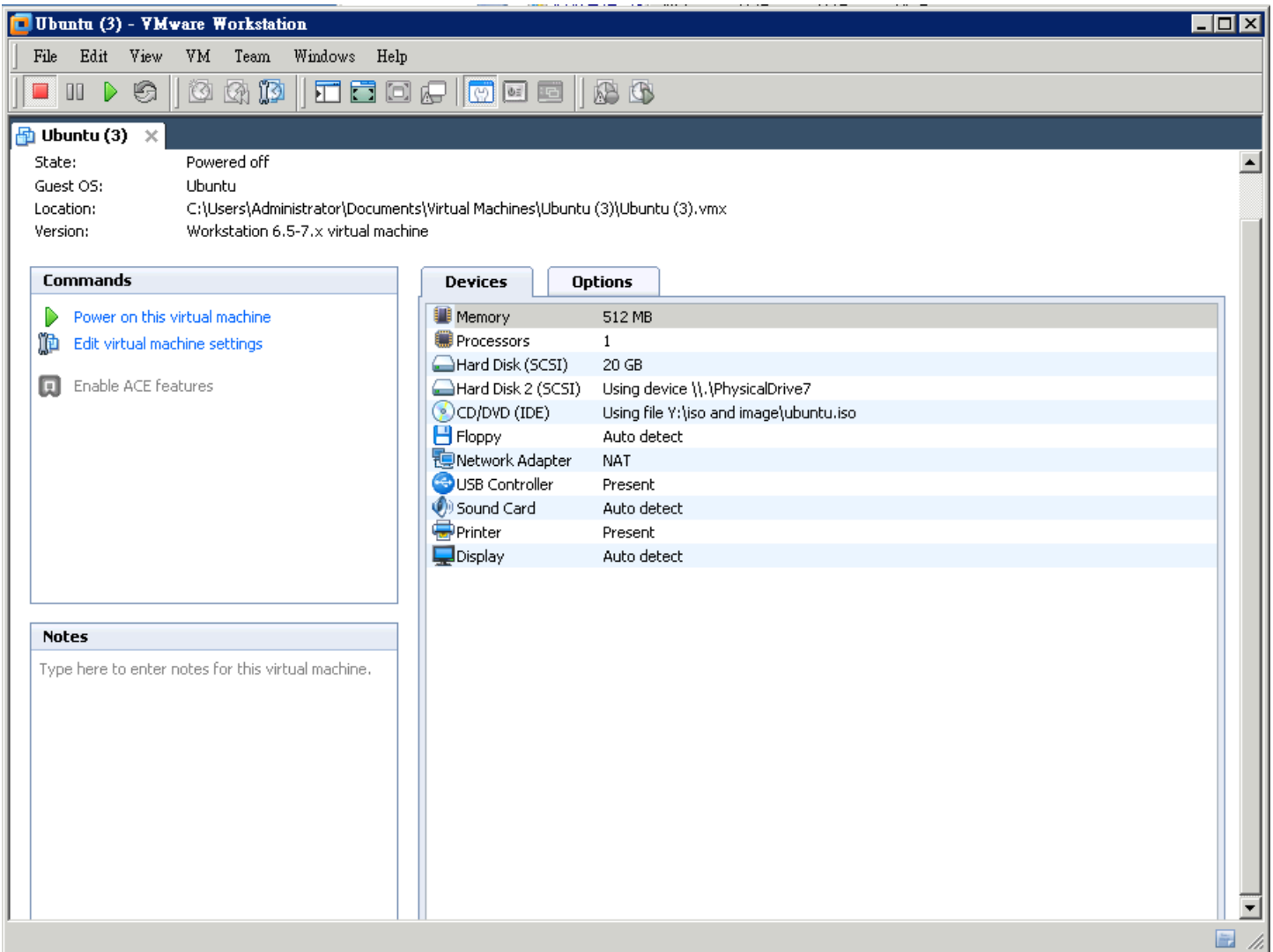


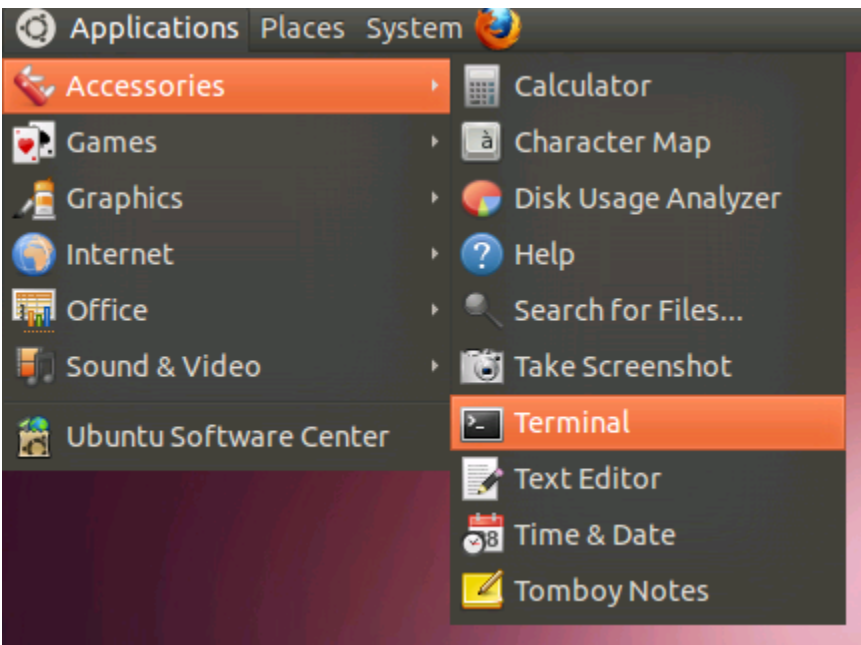
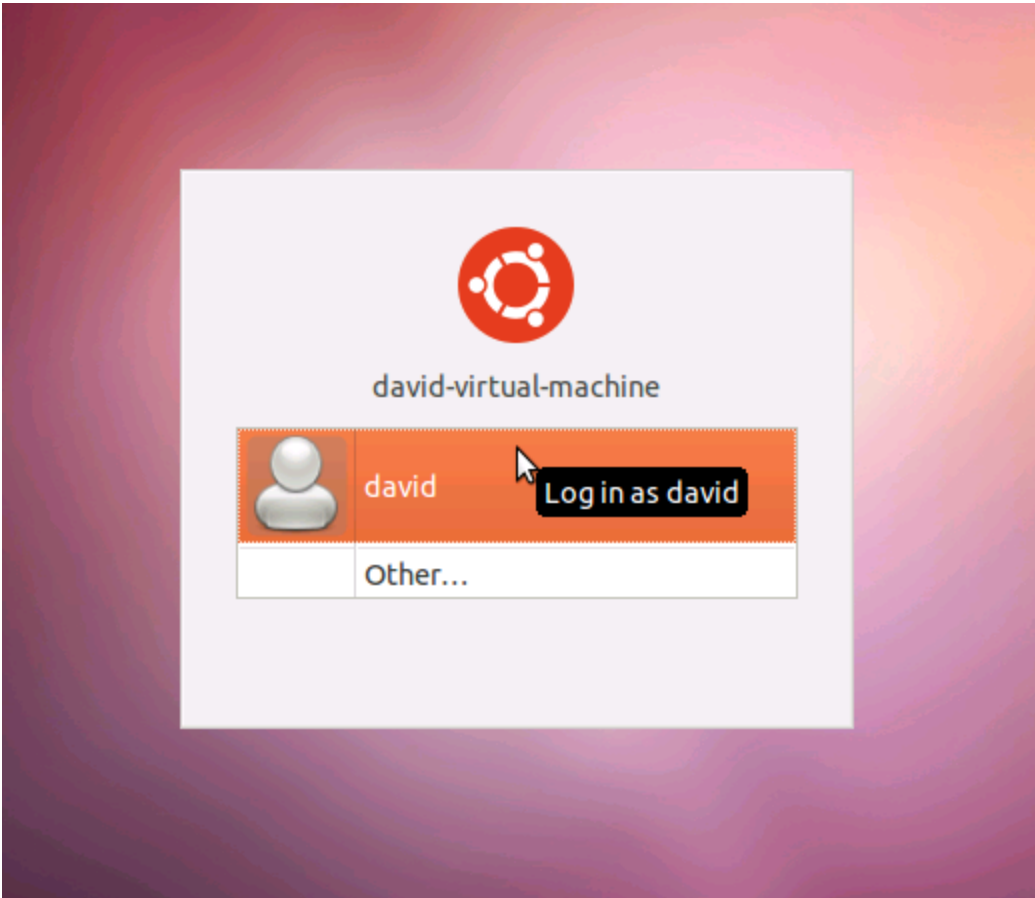


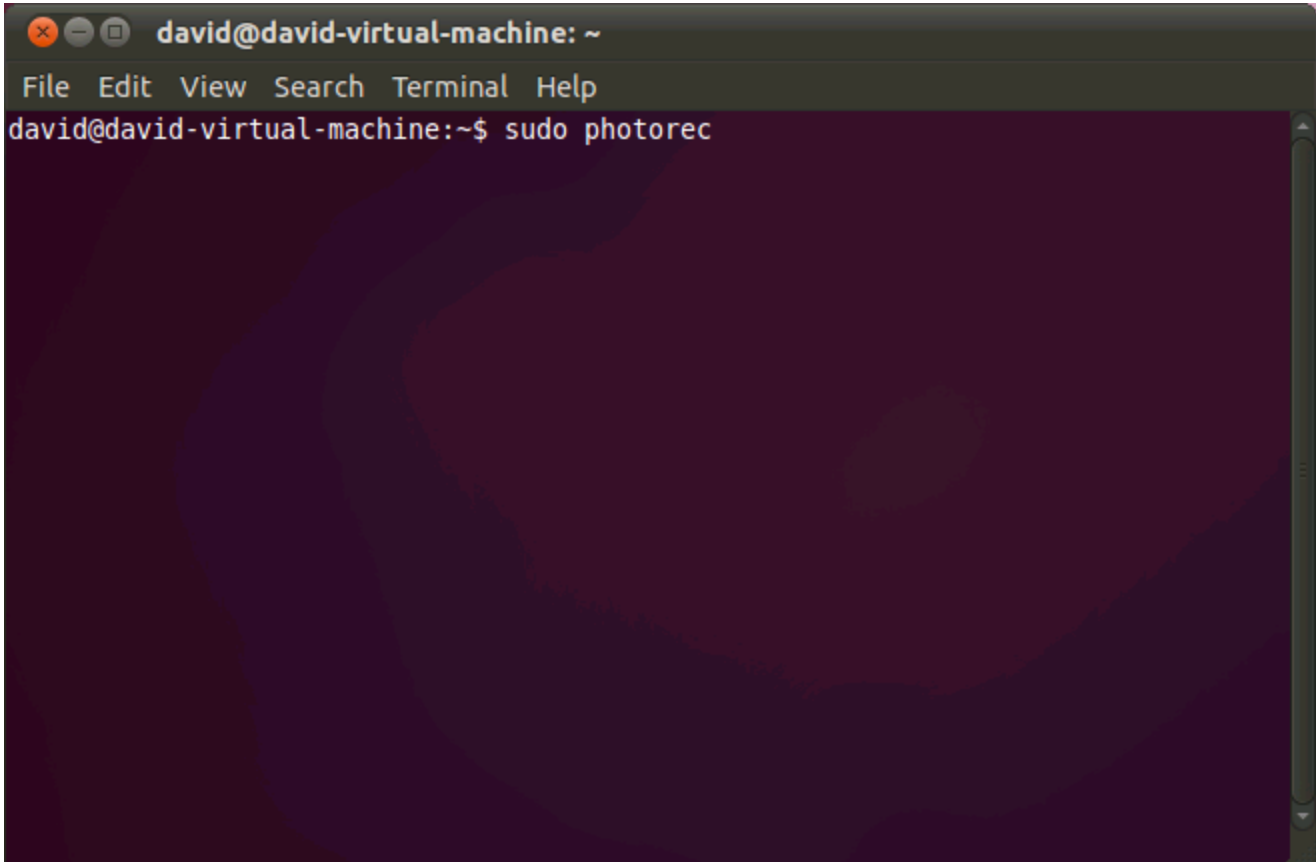












```

david@david-virtual-machine: ~
File Edit View Search Terminal Help
PhotoRec 6.11, Data Recovery Utility, April 2009
Christophe GRENIER <grenier@cgsecurity.org>
http://www.cgsecurity.org

  PhotoRec is free software, and
comes with ABSOLUTELY NO WARRANTY.

Select a media (use Arrow keys, then press Enter):
Disk /dev/sda - 21 GB / 20 GiB (R0) - VMware, VMware Virtual S
Disk /dev/sdb - 2000 GB / 1863 GiB (R0) - VMware, VMware Virtual S

[Proceed ] [ Quit ]

Note:
Disk capacity must be correctly detected for a successful recovery.
If a disk listed above has incorrect size, check HD jumper settings, BIOS
detection, and install the latest OS patches and disk drivers.
```

```

david@david-virtual-machine: ~
File Edit View Search Terminal Help
PhotoRec 6.11, Data Recovery Utility, April 2009
Christophe GRENIER <grenier@cgsecurity.org>
http://www.cgsecurity.org

Disk /dev/sdb - 2000 GB / 1863 GiB (R0) - VMware, VMware Virtual S

Please select the partition table type, press Enter when done.
[Intel ] Intel/PC partition
[EFI GPT] EFI GPT partition map (Mac i386, some x86_64...)
[Mac   ] Apple partition map
[None  ] Non partitioned media
[Sun   ] Sun Solaris partition
[XBox  ] Xbox partition
[Return] Return to disk selection

Note: Do NOT select 'None' for media with only a single partition. It's very
rare for a drive to be 'Non-partitioned'.
```

```

david@david-virtual-machine: ~
File Edit View Search Terminal Help
PhotoRec 6.11, Data Recovery Utility, April 2009
Christophe GRENIER <grenier@cgsecurity.org>
http://www.cgsecurity.org

Disk /dev/sdb - 2000 GB / 1863 GiB (R0) - VMware, VMware Virtual S

Partition          Start          End      Size in sectors
No partition       0 0 1 243201 78 13 3907028992 [Whole disk]
1 P Linux          132 0 5 243137 254 63 3903891386
2 * Linux          243138 0 7 243178 254 63 658659

[ Search ] [Options ] [File Opt] [ Quit ]
                Start file recovery

```



```

david@david-virtual-machine: ~
File Edit View Search Terminal Help
PhotoRec 6.11, Data Recovery Utility, April 2009
Christophe GRENIER <grenier@cgsecurity.org>
http://www.cgsecurity.org

1 P Linux          132  0  5 243137 254 63 3903891386

To recover lost files, PhotoRec need to know the filesystem type where the
file were stored:
[ ext2/ext3 ]  ext2/ext3/ext4 filesystem
[ Other     ]  FAT/NTFS/HFS+/ReiserFS/...
```

```

david@david-virtual-machine: ~
File Edit View Search Terminal Help
PhotoRec 6.11, Data Recovery Utility, April 2009
Christophe GRENIER <grenier@cgsecurity.org>
http://www.cgsecurity.org

1 P Linux          132  0  5 243137 254 63 3903891386

Please choose if all space need to be analysed:
[  Free  ] Scan for file from ext2/ext3 unallocated space only
[  Whole ] Extract files from whole partition

```

```

david@david-virtual-machine: ~
File Edit View Search Terminal Help
PhotoRec 6.11, Data Recovery Utility, April 2009
Christophe GRENIER <grenier@cgsecurity.org>
http://www.cgsecurity.org

Do you want to save recovered files in /home/david ? [Y/N]
Do not choose to write the files to the same partition they were stored on.

To select another directory, use the arrow keys.
drwxr-xr-x 1000 1000 4096 15-Sep-2011 20:52 .
drwxr-xr-x 0 0 4096 23-Jul-2011 03:25 ..
drwxr-xr-x 1000 1000 4096 23-Jul-2011 03:29 Desktop
drwxr-xr-x 1000 1000 4096 23-Jul-2011 03:29 Documents
drwxr-xr-x 1000 1000 4096 23-Jul-2011 03:29 Downloads
drwxr-xr-x 1000 1000 4096 23-Jul-2011 03:29 Music
drwxr-xr-x 1000 1000 4096 23-Jul-2011 03:29 Pictures
drwxr-xr-x 1000 1000 4096 23-Jul-2011 03:29 Public
drwxr-xr-x 1000 1000 4096 23-Jul-2011 03:29 Templates
drwxr-xr-x 1000 1000 4096 23-Jul-2011 03:29 Videos
drwxr-xr-x 1000 1000 4096 22-Jul-2011 20:28 zzzz
-rw-r--r-- 1000 1000 179 23-Jul-2011 03:25 examples.desktop
-rw-r--r-- 0 0 43726 22-Jul-2011 20:28 photorec.ses
-rw-r--r-- 0 0 787 22-Jul-2011 21:49 testdisk.log

```

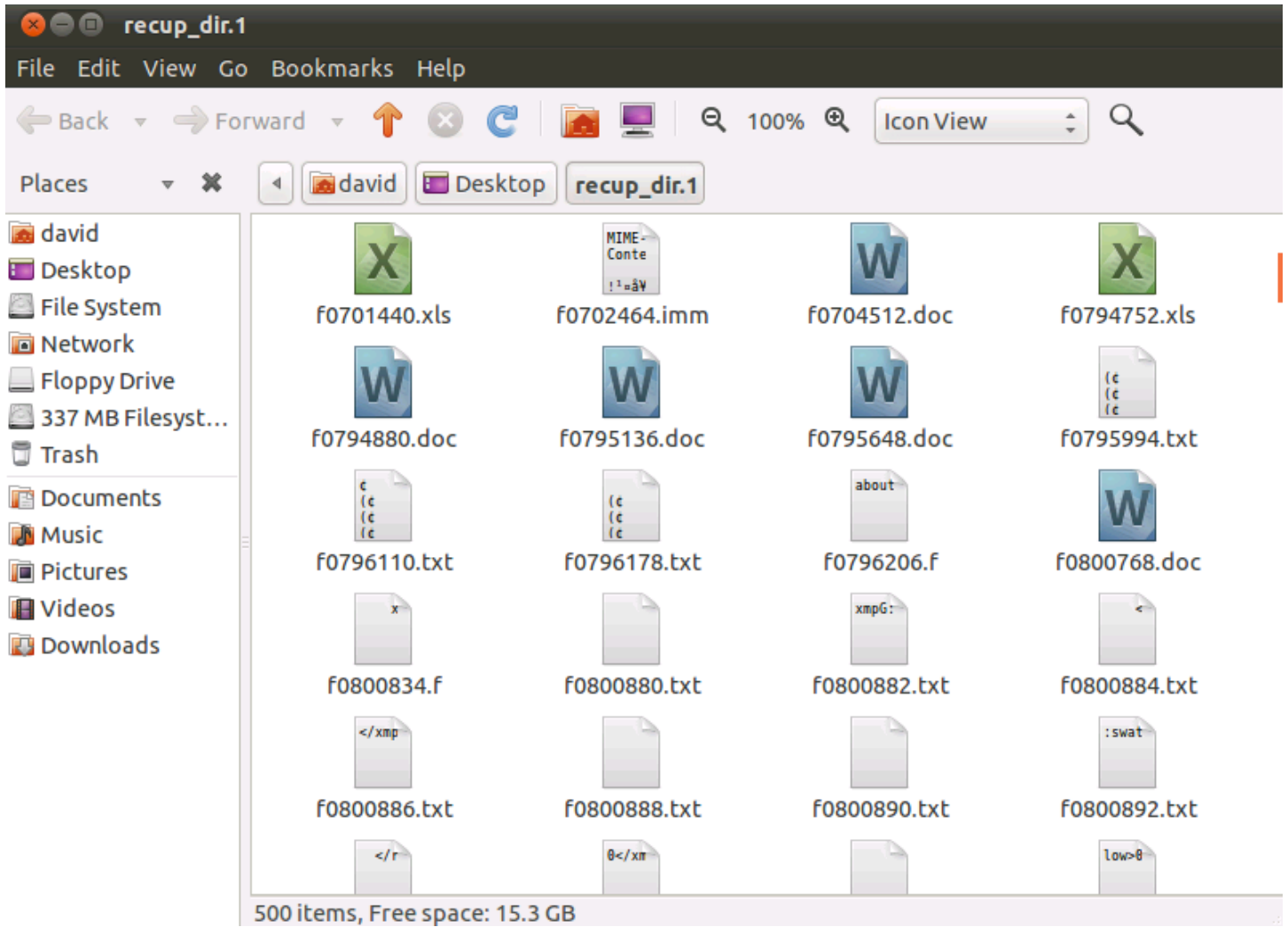
```

david@david-virtual-machine: ~
File Edit View Search Terminal Help
PhotoRec 6.11, Data Recovery Utility, April 2009
Christophe GRENIER <grenier@cgsecurity.org>
http://www.cgsecurity.org

Disk /dev/sdb - 2000 GB / 1863 GiB (R0) - VMware, VMware Virtual S
Partition      Start      End      Size in sectors
1 P Linux      132      0 5 243137 254 63 3903891386

Pass 1 - Reading sector      490076/3903891386, 16 files found
Elapsed time 0h00m09s - Estimated time for achievement 19h54m44
doc: 10 recovered
exe: 3 recovered
zip: 2 recovered
psd: 1 recovered

Stop
```



f0795136.doc (read-only) - LibreOffice Writer

File Edit View Insert Format Table Tools Window Help

Find Text

Page 1 / 7 | First Page | STD | 100%

The screenshot displays a LibreOffice Writer window with a document titled "f0795136.doc (read-only)". The interface includes a menu bar (File, Edit, View, Insert, Format, Table, Tools, Window, Help) and a toolbar with various icons for file operations, editing, and navigation. The main content area shows a complex table with multiple columns and rows. Some cells in the table are highlighted in yellow. The text within the table is partially obscured by a watermark or heavy blurring, but some words like "Table" and "Text" are visible. The status bar at the bottom indicates "Page 1 / 7", "First Page", "STD", and "100%".