

????

- CentOS 5.8 (64-bit)
- Zimbra Collaboration Suite - Open Source Edition 7.14

????

?? CentOS Linux

????????????????????

Server

- Base
- Development Libraries
- Editors
- Server Configuration Tools
- Text-based Internet

?? sendmail ??(?????)

????????????sendmail ?????????????? zimbra-mta ??????????????????

?? sendmail

```
chkconfig sendmail off
service sendmail stop
service zimbra stop
service zimbra start
service zimbra status
```

??????

```
service sendmail stop
yum remove sendmail
```

??????

PS: ?????????? Firewall ? SELinux ???

?? /etc/sysconfig/network

```
NETWORKING=yes
NETWORKING_IPV6=no
HOSTNAME=mail.osslab.co.cc
```

?? /etc/hosts

```
127.0.0.1      localhost.localdomain localhost
```

211.72.203.64 mail.ossllab.co.cc mail

?????????

yum install sysstat.x86_64 perl.x86_64 sudo.x86_64 sqlite.x86_64

?? ZCS

?? ZCS?<http://www.zimbra.com/downloads/os-downloads.html>

cd /usr/src

wget http://files2.zimbra.com/downloads/7.1.4_GA/zcs-7.1.4_GA_2555.RHEL5_64.20120105094627.tgz

tar xzf zcs-7.1.4_GA_2555.RHEL5_64.20120105094627.tgz

cd zcs-7.1.4_GA_2555.RHEL5_64.20120105094627

./install.sh --platform-override

PS: ?????????????? RHEL????? CentOS ?????????? --platform-override?

????

PS: ??????????????????

Do you agree with the terms of the software license agreement? [N]y

Select the packages to install

Install zimbra-ldap [Y]

Install zimbra-logger [Y]

Install zimbra-mta [Y]

Install zimbra-snmp [Y]

Install zimbra-store [Y]

Install zimbra-apache [Y]

Install zimbra-spell [Y]

Install zimbra-memcached [N]

Install zimbra-proxy [N]

You appear to be installing packages on a platform different than the platform for which they were built.

This platform is CentOS5_64

Packages found: RHEL5_64

This may or may not work.

Using packages for a platform in which they were not designed for may result in an installation that is NOT usable. Your support options may be limited if you choose to continue.

Install anyway? [N]y

The system will be modified. Continue? [N]y

?????????

?? domain name

DNS ERROR resolving MX for mail.osslab.co.cc

It is suggested that the domain name have an MX record configured in DNS

Change domain name? [Yes]

Create domain: [mail.osslab.co.cc] osslab.co.cc

Main menu

1) Common Configuration:

2) zimbra-ldap: Enabled

3) zimbra-store: Enabled

+Create Admin User: yes

+Admin user to create: admin@osslab.co.cc

***** +Admin Password UNSET

+Anti-virus quarantine user: virus-quarantine.twwwqvc4a@osslab.co.cc

+Enable automated spam training: yes

+Spam training user: spam.vhxewghl@osslab.co.cc

+Non-spam(Ham) training user: ham.l3r6hp9ro@osslab.co.cc

+SMTP host: mail.osslab.co.cc

+Web server HTTP port: 80

+Web server HTTPS port: 443

+Web server mode: http

+IMAP server port: 143

+IMAP server SSL port: 993

+POP server port: 110

+POP server SSL port: 995

+Use spell check server: yes

+Spell server URL: http://mail.osslab.co.cc:7780/aspell.php

+Configure for use with mail proxy: FALSE

+Configure for use with web proxy: FALSE

+Enable version update checks: TRUE

+Enable version update notifications: TRUE

+Version update notification email: admin@osslab.co.cc

+Version update source email: admin@osslab.co.cc

4) zimbra-mta: Enabled

5) zimbra-snmp: Enabled

6) zimbra-logger: Enabled

7) zimbra-spell: Enabled

8) Default Class of Service Configuration:

r) Start servers after configuration yes

s) Save config to file

x) Expand menu

q) Quit

Address unconfigured (**) items (? - help)

- ?? 3 > 4 ????????
- ?? r ?????
- ?? a ?????

...

...

*** CONFIGURATION COMPLETE - press 'a' to apply

Select from menu, or press 'a' to apply config (? - help)a <??a ?????>

Save configuration data to a file? [Yes]

Save config in file: [/opt/zimbra/config.14984]

The system will be modified - continue? [No] y

?????????

TIPS: ?????????????? admin ??????????????????????????????????

Notify Zimbra of your installation? [Yes] no

Notification skipped

Starting servers...done.

Installing common zimlets...

com_zimbra_url...done.

com_zimbra_adminversioncheck...done.

com_zimbra_social...done.

com_zimbra_cert_manager...done.

com_zimbra_bulkprovision...done.

com_zimbra_phone...done.

com_zimbra_linkedin...done.

com_zimbra_attachcontacts...done.

com_zimbra_dnd...done.

com_zimbra_email...done.

com_zimbra_webex...done.

com_zimbra_date...done.

com_zimbra_srchhighlighter...done.

com_zimbra_attachmail...done.

Finished installing common zimlets.
 Restarting mailboxd...done.
 Setting up zimbra crontab...done.

Moving /tmp/zmsetup.03212012-064803.log to /opt/zimbra/log

Configuration complete - press return to exit

????? (?????)

?? iptables ??

?? /etc/sysconfig/iptables

...

enable zimbra ports

```
-A RH-Firewall-1-INPUT -m state --state NEW -m tcp -p tcp --dport 25 -j ACCEPT
-A RH-Firewall-1-INPUT -m state --state NEW -m tcp -p tcp --dport 80 -j ACCEPT
-A RH-Firewall-1-INPUT -m state --state NEW -m tcp -p tcp --dport 110 -j ACCEPT
-A RH-Firewall-1-INPUT -m state --state NEW -m tcp -p tcp --dport 143 -j ACCEPT
-A RH-Firewall-1-INPUT -m state --state NEW -m tcp -p tcp --dport 443 -j ACCEPT
-A RH-Firewall-1-INPUT -m state --state NEW -m tcp -p tcp --dport 465 -j ACCEPT
-A RH-Firewall-1-INPUT -m state --state NEW -m tcp -p tcp --dport 993 -j ACCEPT
-A RH-Firewall-1-INPUT -m state --state NEW -m tcp -p tcp --dport 995 -j ACCEPT
-A RH-Firewall-1-INPUT -m state --state NEW -m tcp -p tcp --dport 7071 -j ACCEPT
-A RH-Firewall-1-INPUT -m state --state NEW -m tcp -p tcp --dport 5480 -j ACCEPT
#
-A RH-Firewall-1-INPUT -j REJECT --reject-with icmp-host-prohibited
COMMIT
```

NOTE:

????????????????

?? iptables

service iptables stop
 service iptables start

?? SELinux

???? iptables ? SELinux

????????????

service iptables stop
setenforce 0

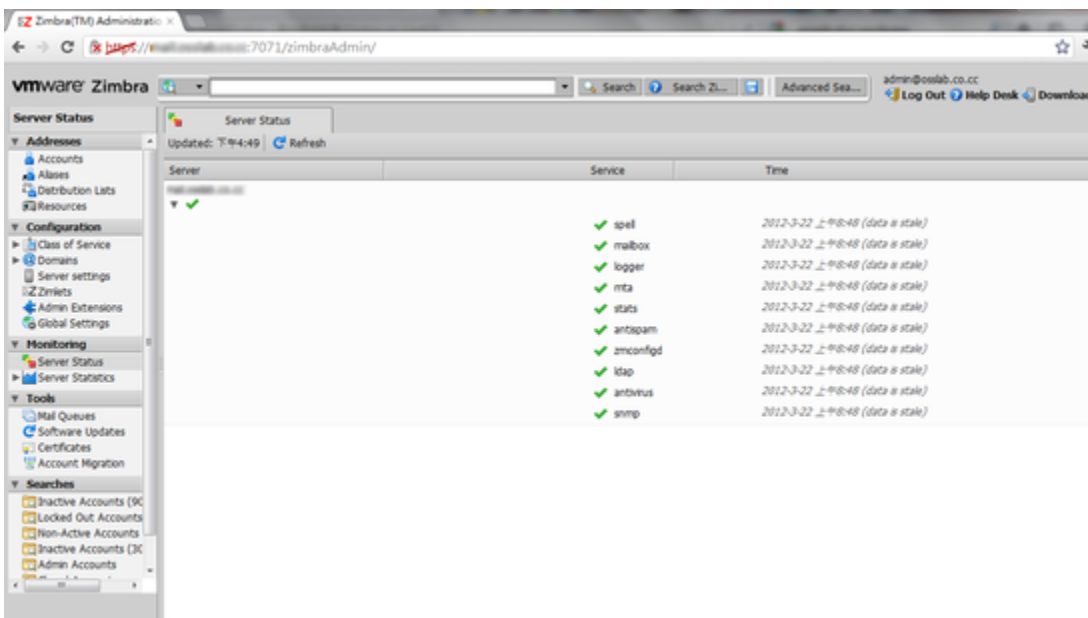
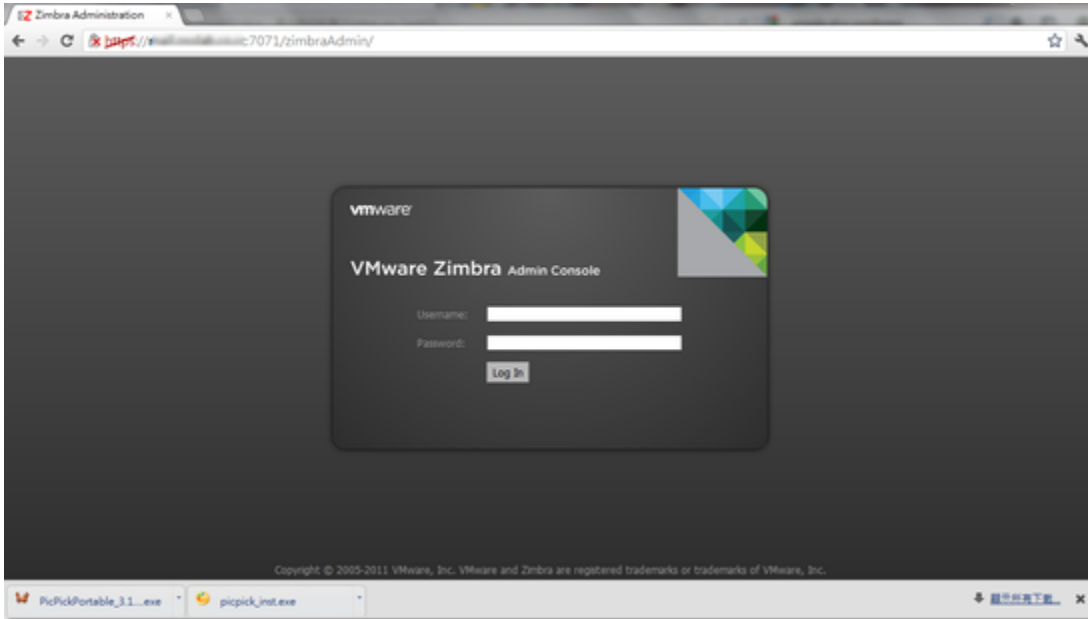
????

????(Zimbra Admin Console)?https://123.123.123.123:7071/?admin / <?????>

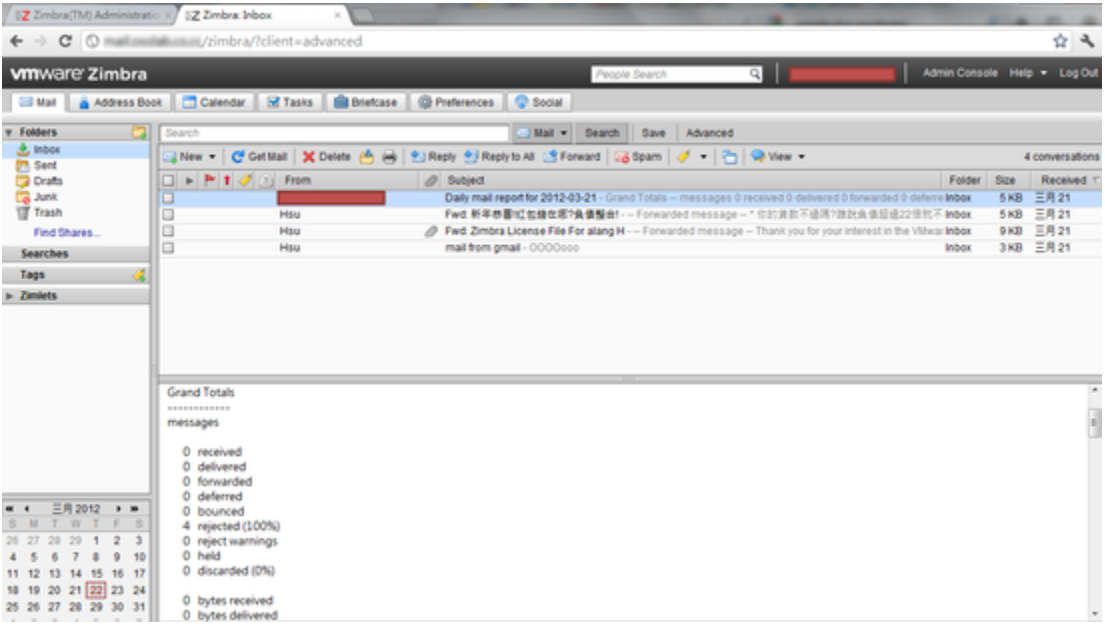
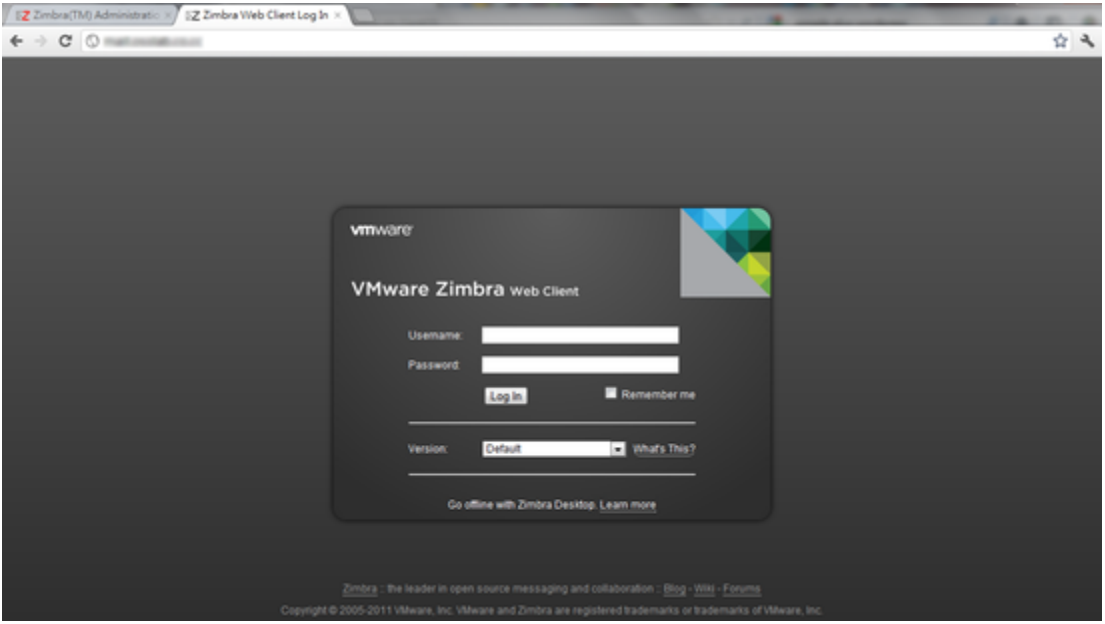
????(Zimbra Web Client)?http://123.123.123.123/?admin / <??>?

????

Admin Console



Web Client



???



FAQ

Q: Admin Console ? Status ??????????????

Ans???????? Linux ? syslogd ? Zimbra ? logger ??????? /var/log/zimbra*.log ??????????????????

? root ??

#/opt/zimbra/libexec/zmsyslogsetup

???? /etc/rsyslog.conf ?

cd /etc

mv syslog.conf syslog.conf.default

mv rsyslog.conf syslog.conf

???? syslog.conf ?

Use traditional timestamp format

\$ActionFileDefaultTemplate RSYSLOG_TraditionalFileFormat

Provides kernel logging support (previously done by rklogd)

\$ModLoad imklog

Provides support for local system logging (e.g. via logger command)

\$ModLoad imuxsock

Log all kernel messages to the console.

Logging much else clutters up the screen.

#kern.* /dev/console

Log anything (except mail) of level info or higher.

Don't log private authentication messages!

*.info;authpriv.none;cron.none /var/log/messages


```
# The authpriv file has restricted access.
authpriv.*                /var/log/secure

# Log all the mail messages in one place.
mail.*                    -/var/log/maillog

# Log cron stuff
cron.*                    /var/log/cron

# Everybody gets emergency messages
*.emerg                   *

# Save news errors of level crit and higher in a special file.
uucp,news.crit           /var/log/spooler

# Save boot messages also to boot.log
local7.*                  /var/log/boot.log
local0.*                  -/var/log/zimbra.log
local1.*                  -/var/log/zimbra-stats.log
auth.*                    -/var/log/zimbra.log
mail.*                    -/var/log/zimbra.log

????

service syslog restart
service zimbra restart

??? refresh ?????? 2-3 ???
```