



Unlimited Indoor/Outdoor AP Scalability in a Unified Management System

Breakthrough Capacity up to 750 Mbps

Intuitive UniFi Controller Software

Hotspot Management – Customization and Built-In Billing Options



UniFi AP solution???????WiFi network????????????, ?????(Indoor)???(Outdoor)???.

???????

- Wiki: http://wiki.ubnt.com/Main_Page
- Knowledge Base: <https://community.ubnt.com/t5/tkb/communitypage>
 - ? [UniFi Controller Installation](#)
 - ? [UniFi - Install controller software on CentOS](#)

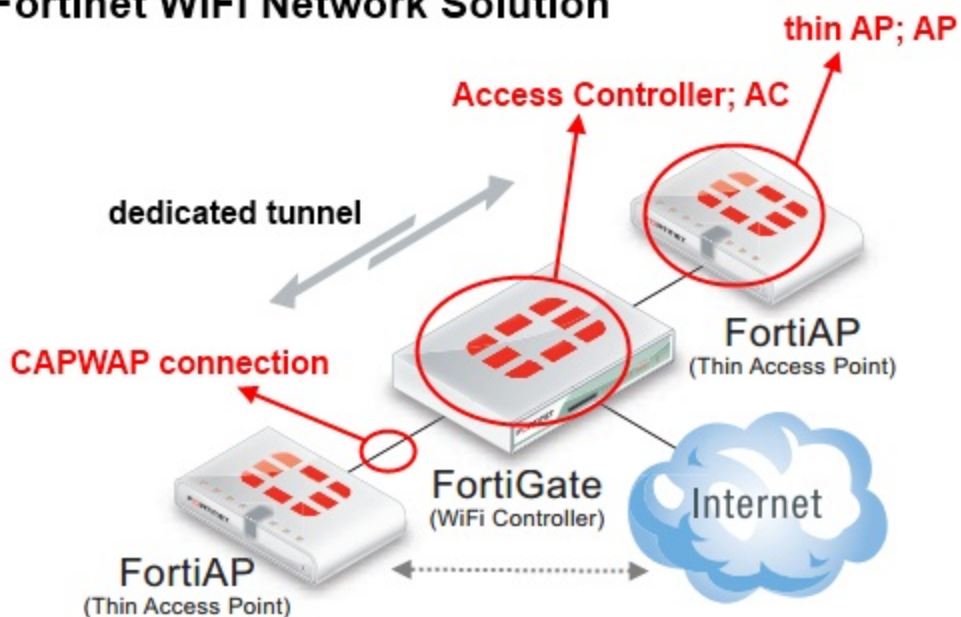
?????

- [AWS-based?????\(Cloud-based controller\)](#)
- [DSCP/COS????\(QoS\)??](#)
- [VLAN??BYOD????](#)
- [Wireless Uplink](#)
- [??\(inform\)AC](#)

????

UniFi AP system?????wireless network????????????, ?????(indoor)???(outdoor)???. ???AP(wireless router)?
 ???, ?????thin AP???, ?????AC(Access Controller)?????????(Central Management), AC????????thin AP???, ??
 ?AP+AC????????, AC????????(????), ?????client?????. ???Fortinet?AC+AP solution, ?????CAPWAP??tunnel:

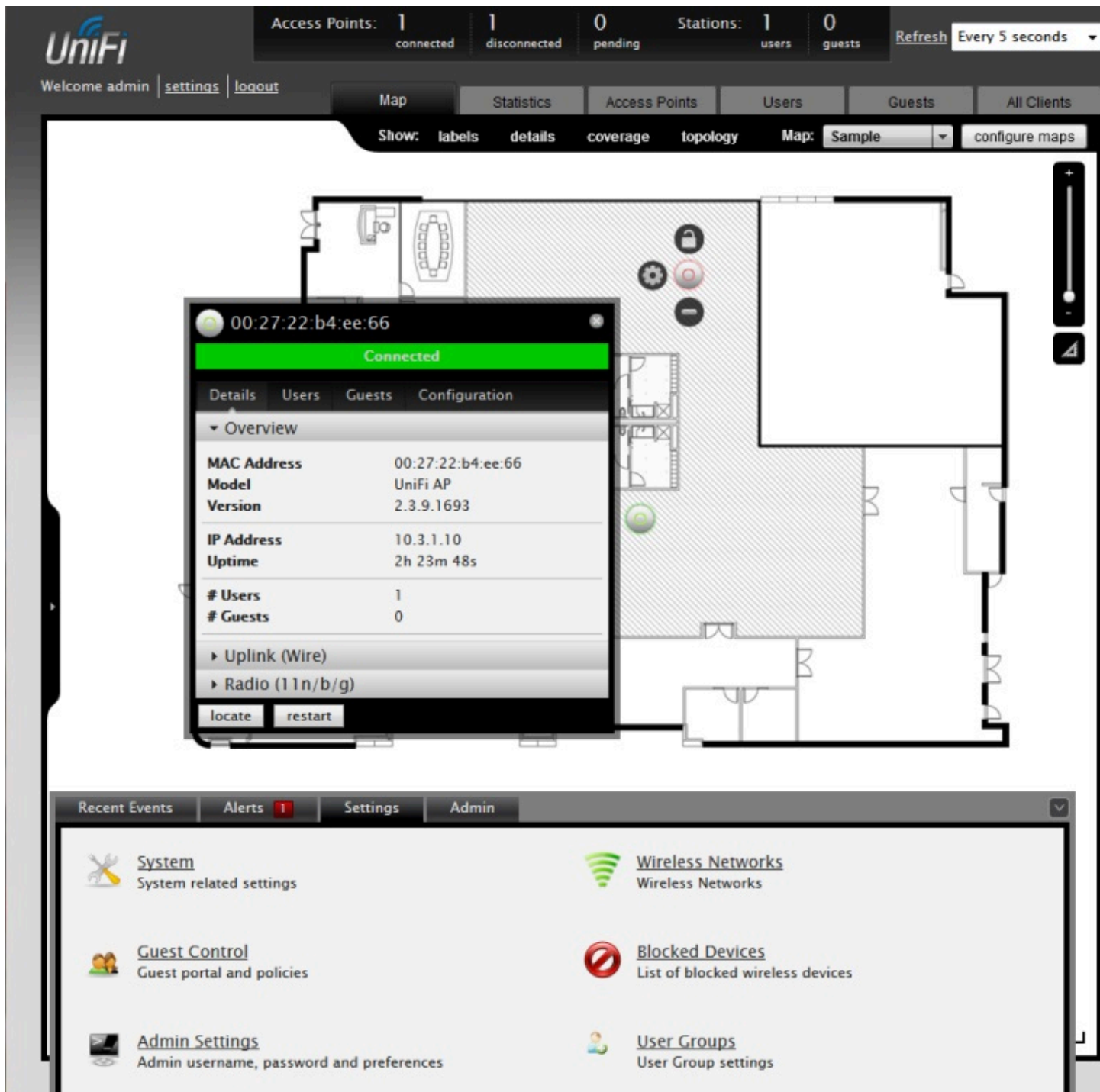
Fortinet WiFi Network Solution



Fortinet???AC+AP solution, ?AC?????????, ???client?????, AP?AC?????CAPWAP(udp, 5246;5247)??tunnel??, ? UniFi AP system?????, AC?????client?????, ?AP?AC?????tunnel, ??????????????. UniFi AP system?????????:

1. thin AP?????AC???????
2. AP?AC?????tunnel??, AC?????client?????????
3. thin AP???????wireless bridge, L3?????, ??IP addressing?????????NAT??.
4. ??????traffic-shaping??, ???WME(WMM)??, ??QoS(?????????DSCP).
5. ??Guest Control, ??????; ??User/Group Management.
6. ??Wireless Uplink.
7. ??????????????(Detailed Analytics).
8. ??????(Roaming; Zero Handoff Roaming).
9. ??????PoE?(?????).
10. ??????, AC????????????, ?????????????.

UniFi AP system?????AC?????, ??????????????, ??????x86 PC?????. AC?????Web-based manager???AP?????.

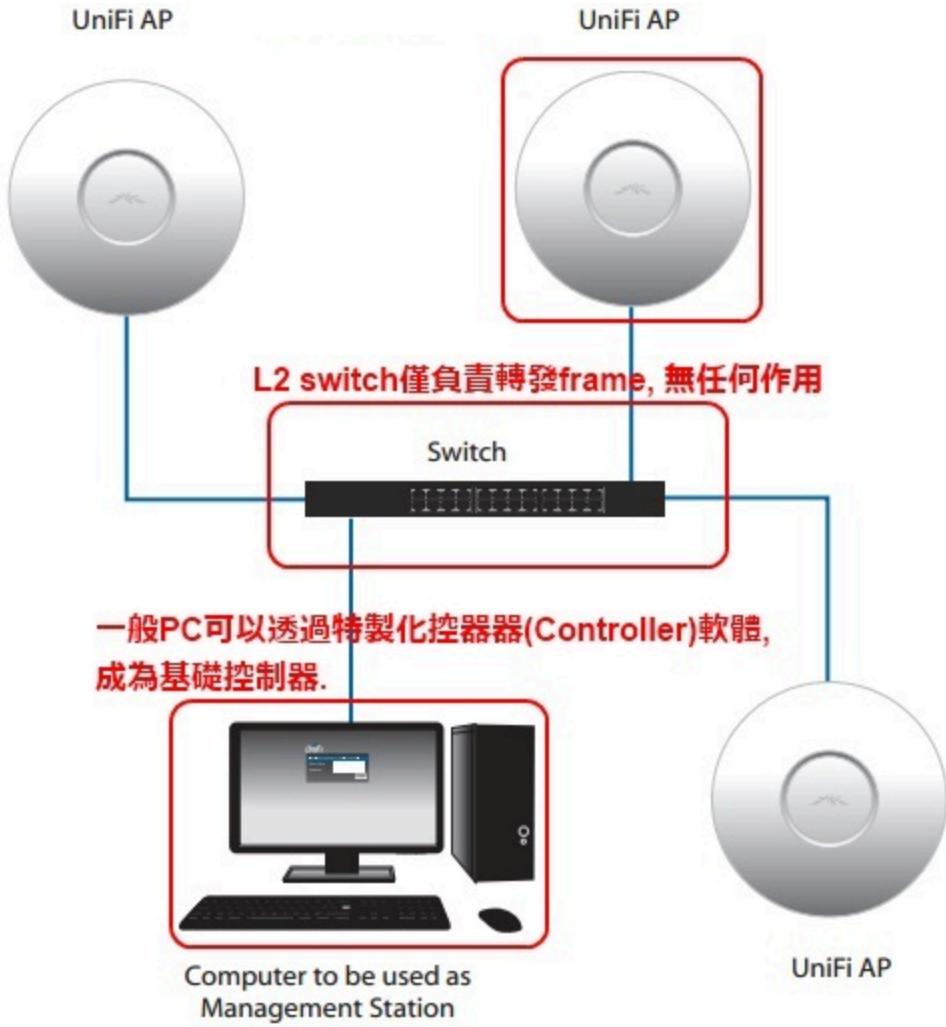


????thin AP?????, ???AC?????????, ?????????????thin AP?????.

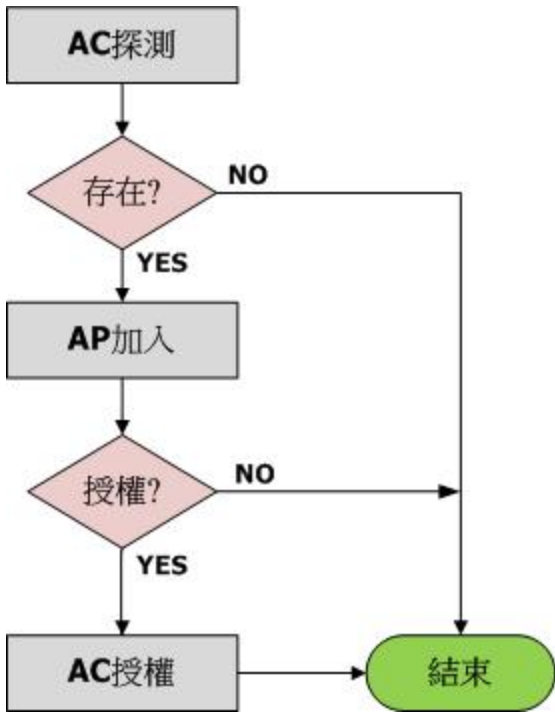
thin AP Discovery

thin AP?????, ?????????AC?????. ??, thin AP???AC?????. ?UniFi AP system??AC?discovery?????L2?L3???. re-writting...

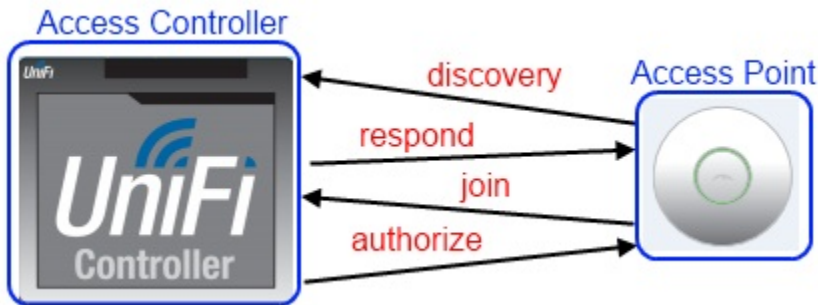
3. ?????, ?????????.
4. ?????AC??, AC?????????, ?????L3?????????, ?tunnel??.
5. ?????????????, ?????????????, ex: RouterOS.
6. ?????????L3??, UniFi AP solution???client?????.



UniFi AP solution AC+AP, , AP:
AP, discovery. , .
, , :



?????????AP????AC??, ???AC??, ?????! ??AC?????AP, ???AP?AC?????. ????????????, AP????AC?????L3?????, ?????L2 network, ???????????????.



????AC?????, ?????L3????, ????????????, ??AC?????, ?????inform AC????AP????AC?????, ???domain name????IP(domain name??????????).

?UniFi AP solution????????????????????, AP?AC????????, client????????????????????, L2????????????????L3????.



UniFi AP solution????????????????(Guest Control), ?????????, ?????????QoS????(Traffic Shaping), ?
????????????BYOD?, ??????????. ??SSID????????????, ???VLAN????????????, ??????. ???AP??????
??, ?????????????(Controller)??????????.



Unifi AP solution?????????, ??????????, ??????????:
http://dl.ubnt.com/datasheets/unifi/..._Datasheet.pdf

?????

???????, ??????????. ???????????.



<http://www.ubnt.com/unifi>

FAQ

http://wiki.ubnt.com/UniFi_FAQ

????

<http://wiki.openwrt.org/toh/<wbr/>ubiquiti/unifi>

???

http://www.ubnt.com/downloads/<wbr/>guides/UniFi/UniFi_AP_AP-LR<wbr/>User_Guide.pdf

?????? <http://forum.ubnt.com/forumdisplay.php?f=48>

?AP ??thin AP ??(GUI) ????? PC ?????wireless controller ,??
wireless ?????????????licenese ,??????AP?????

UniFi AP???POE APP

??:

thin poe ap
?SSID ??SSID ??????
open wlan
??
1.??????
2.??????
3.?Paypa api ??????????
4.Portal ??????
5.??????????

????????????

????
client ????
????????
wireless vlan

Wireless uplink=Mesh

????????????

L3 ??????+pppoe ??

x86 Router OS :

????

RouterOS , ??? , wayos ,m0n0Wall , SmoothWall ,CoyoteLinux , Vyatta

??? <http://www.hi-spider.com/>

???





UniFi??????????



*???? ??????????

??????

- ???????
- ??????????????
- ??????????
- ?????????????? AP



UniFi ?????

????????

“Ubiquiti Networks??”????????

?????HW????????????

??

????????

Wi-fi.org?????ID?WFA9602

????????

- ? ????
- ? ??????
- ? ????
- ? ?????/??
- ? ??/????
- ? ?????/??
- ? ????
- ? ??????
- ? ???

??????

*?????????????????Google???

*???????????????

*?????????24??30????????????? ?????

*?????????SSID????

*?????????

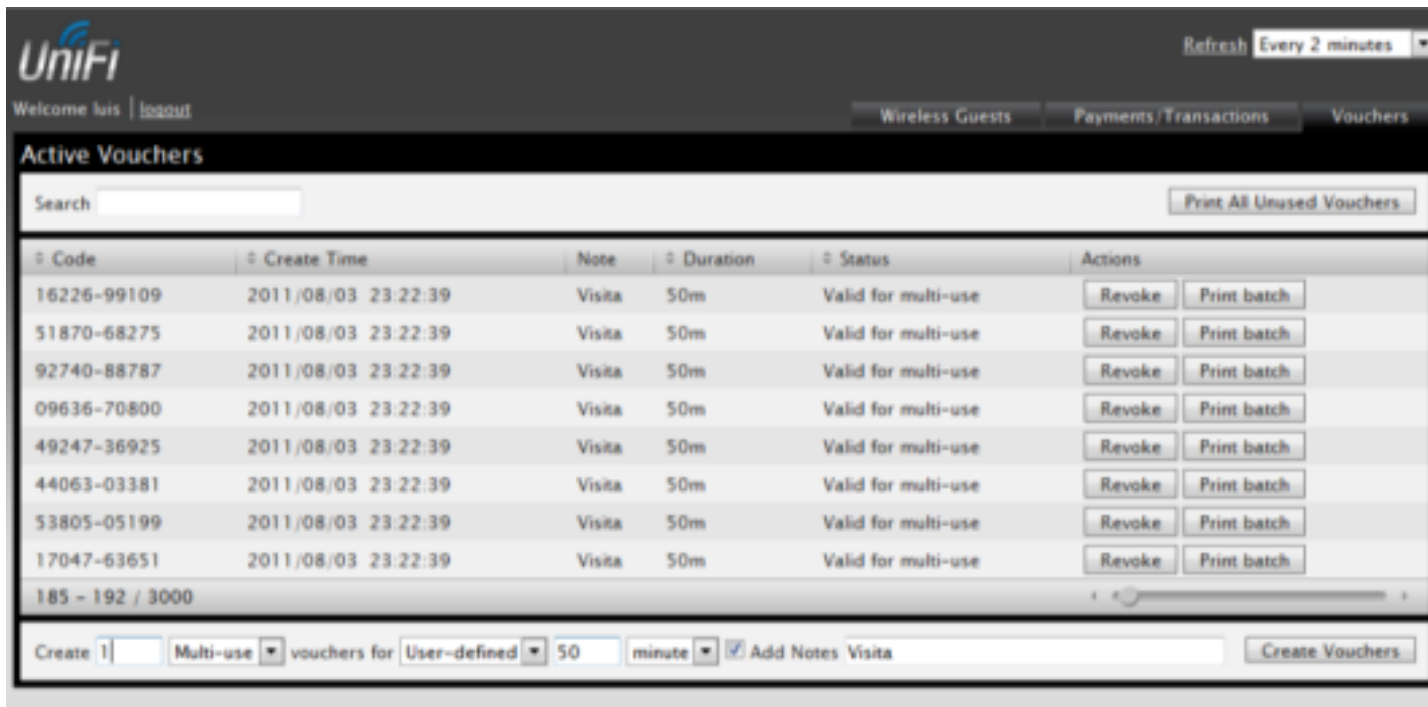
*???????????????

????????

- ??????????????????



- ????
 - ??????????????????
 - ??????????????????????
 - ???NOC o Cloudd ???
-?????????????????



HOTSPOT ????

- ????????????
- ? ???ID
- ? ??????????
- ????????
- ? ???????

*?MAC?????????

????

- ???? : WEP/WAP/WAP2(AES/TKIP)/802.1x(Radius)
- ?? MAC
- SSID ??
- ???????(????)
- ? ???
- ? ???????
- ? ???????
- ? ??????? ???????????????????
- ?SSID?VLAN??

The screenshot shows the UniFi web interface. At the top, there are statistics: Access Points: 8 connected, 0 disconnected, 1 pending; Stations: 0 users, 0 guests. A 'Refresh' button is set to 'Every 2 minutes'. Below this is a navigation bar with 'Map', 'Statistics', 'Access Points', 'Users', and 'Guests'. The main content area is titled 'Managed Access Points' and contains a search bar and a table of access points.

Name/MAC Address	IP Address	Status	Num Clients	Download	Upload	Channel	Actions
00:27:22:0a:21:52	10.0.0.198	Managed by Other		0.00	0.00		
Pico165	10.0.0.165	Connected (wireless)	0	0.00	0.00	6 (ng)	Restart Locate
UAP-Patrick-LR	10.0.0.61	Connected	0	774K	122K	6 (ng)	Restart Locate
LMS-1hop	10.0.0.64	Connected (wireless)	0	0.00	0.00	161 (na)	Restart Locate

Below the table, there is a 'Settings' menu with 'User Groups' selected. The 'User Group Settings' dialog is open, showing a table of user groups:

Name	Bandwidth Limit	Actions
Basic	Download: 512 Kbps, Upload: 256 Kbps	edit
Extended	Download: 1024 Kbps, Upload: 512 Kbps	edit delete
Premier	Download: 2048 Kbps, Upload: 1024 Kbps	edit delete

A 'Create' button is visible at the bottom of the dialog.

???????



UAP y UAP-LR

- ??? SSID con VLANS
- 100 Clientes por equipo
- Soporta QoS para Voz y Video
- Segmentación y control de trafico de invitados

Características	UAP	UAP-LR
Potencia(TX)	20dBm	27dBm
Sensibilidad(RX)	-92dBm	-96dBm
Antenas	2	2
Ancho de Canal	20/40Mhz	20/40Mhz
MIMO	2x2	2x2

Incluye Inyector Poe 24v – 0.5A



Tripack o Pack Simple

300Mb
ps



UAP-PRO

- WiFi dual en 2.4Ghz y 5 Ghz simultáneamente.
- Soporte de 2 puertas GE con POE 802.3af
- Segmentación y control de trafico de invitados
- Soporta 802.1Q WMM para Voz y Video
- Seguro para instalación
- 8 SSID, 4 en 2,4Ghz y 4 en 5Ghz

Características	UAP-PRO
Potencia(TX)	30dBm 2.4Ghz 22dBm 5Ghz
Sensibilidad(RX)	-92dBm
Antenas	03 2.4Ghz, 02 5Ghz
Ancho de Canal	20/40Mhz
MIMO	2x2 y 3x3



Incluye Inyector Poe 48v – 1A



Tripack o Pack Simple



**450Mbps(MIMO
3x3)**



**300Mbps (MIMO
2x2)**

PICOM2HP

- Soporte de 04 SSID con VLANS
- Soporta + de 100 Clientes por equipo
- Soporta QoS para Voz y Video
- Segmentación y control de trafico de invitados

Características	PICOM2 HP
Potencia(TX)	28dBm
Sensibilidad(RX)	-96dBm
Antenas	1
Ancho de Canal	20Mhz
MIMO	NO(SISO)

Incluye Inyector Poe 24v – 0.5A



**150Mb
ps**

UAP-OUTDOOR y UAP-OUTDOOR5

- Soporte de 04 SSID con VLANS
- Soporta + de 100 Clientes por equipo
- Soporta QoS para Voz y Video
- Incluye 2 Puertos Ethernet, con soporte POE.
- Segmentación y control de trafico de invitados

Características	UAP OutDoor	UAP OutDoor5
Potencia(TX)	27dBm(2.4Ghz)	27dBm(5Ghz)
Sensibilidad(RX)	-96dBm	-96dBm
Antenas	2	2
Ancho de Canal	20/40Mhz	20/40Mhz
MIMO	2x2	2x2



Incluye Inyector Poe
24v – 1A. Con lo cual
soporta Poe
Passthrough para otro
dispositivo de poe
Pasivo

UAP-OUTDOOR 2.4Ghz

Modelos	Frecuencia	Ganancia	Ángulo
AM-2G-15	2.4Ghz	15dBi	120°
AM-2G-16	2.4Ghz	16dBi	90°
AMO-2G10	2.4Ghz	10dBi	360°
AMO-2G13	2.4Ghz	13dBi	360°

UAP-OUTDOOR5 5Ghz

Modelos	Frecuencia	Ganancia	Ángulo
AM-5G-16	5Ghz	16dBi	120°
AM-5G-17	5Ghz	17dBi	90°
AM-5G-19	5Ghz	19dBi	120°
AM-5G-20	5Ghz	20dBi	90°
AMO-5G10	5Ghz	10dBi	360°
AMO-5G13	5Ghz	13dBi	360°



??WiFi????????????????????

- ???
- ??????
- ??
- ????
- ??????

Accesorios

INSTANT 802.3af

- ???????????/ UAP?LR/ UAP????PICOM2??????802.3af PoE48V?
- ??802.3af????????????????????100??
- ?????????????????????????18V ESD??????15kV?
- ?????????????????PoE??24V???????

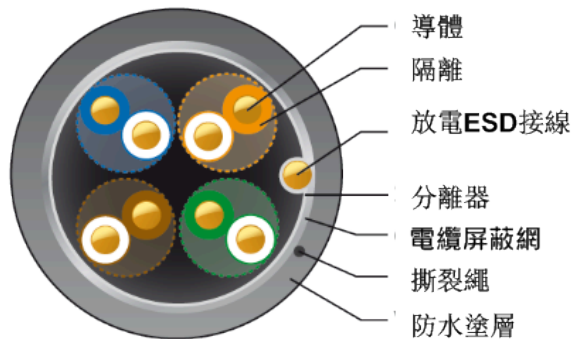


TOUGH CABLE

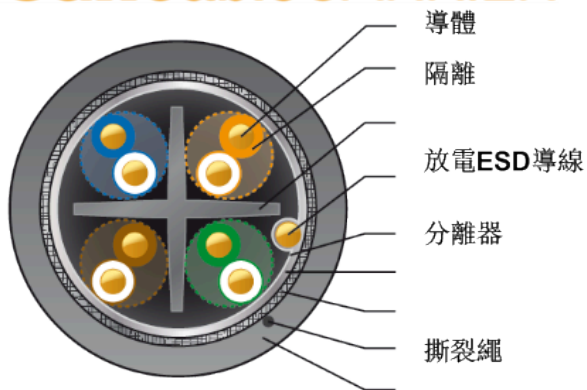
- ?????305????CAT5E????????ESD???
- ?????????????????????????????????
- ?????????????????????????????????
- ???POE?????????
- ??24 AWG????????26 AWG????????15kV?????

*????????????????PoE?PoE????AP????????PoE??????

TOUGH CablePRO



TOUGH CableCARRIER



????????

- ??????(?)
 ? 320 UAP
 ? 1200 Usuarios(locales)
 ? 3TB de descarga mensuales
- ?????(??)
 ? 72 UAP 20 UAP-LR
- ?????(??)
 ? 16 UAP
- ?????(??)
 ? 30 UAP 20 PICOm2HP
- ??????(?)
- ?????????(??)

