

?????

- [DL380Gen10 ????????](#)
- [Install PSP 8.7 on CentOS 5.11](#)
- [Install PSP 9.10 on CentOS 5.11](#)
- [????????\(???? SPP\)](#)

?????????

????????

- HP DL380 Gen8
- HP DL380 Gen9
- HP DL380 Gen10

NOTE:

DL380 G9)

????? Linux ? Windows ?????????? 1GB ??????? Linux??? lsscsi ?????????? HP iLO Lun Disk????? Embedded User Partition????????? BIOS ???????

System Utilities > System Configuration > BIOS/Platform > System Options > USB Options > Embedded User Partition > Disabled

DL385 G8)

?????????iLO LUN ? 268 MB ??? Virtual Install Disk-VID????????????? RedHat ??? LUN ?????? /dev/sdb??? Bootloader ??????? LUN?????????????????????????????

F9 Setup > Advanced Options > Advanced System ROM Options > Virtual install disk

DL380 G10)

- ?????? HP SMH ??????? iLO 5 ??? Agentless Management Service(AMS)?

- ?????? Internal SD Card??? CentOS ?????? sdb ??????????? sdb ?? sda????? BIOS > System Options > USB Options > Internal SD Card > Disabled

?? HP ???????

CentOS 5.x)

1. ??????<http://h20564.www2.hp.com/hpsc/swd/p...vOid=4074#tab3>
2. ??????Management Component Pack for CentOS 5 (i386 and x86\_64)
3. ???hp-mcp-9.50-1-CentOS.tar.gz (76 MB)
4. ???9.50(14 May 2014)

RedHat 5/6)

????? Service Pack Proliant (SPP) ?? ISO ?????? ISO ? Windows ??????

????????????????????????????? Deploy (??) ??????????????????  
??

????????????????? <http://downloads.linux.hpe.com/SDR/repo/mcp/> ?

????????(SMH)

??????CentOS 7.x

1. HP ProLiant Gen10 ??? SMH ?????????????? [https://support.hpe.com/hpsc/doc/pub...ocLocale=zh\\_TW](https://support.hpe.com/hpsc/doc/pub...ocLocale=zh_TW) ????????
2. Gen10 ??? iLO 5 ??? Agentless Management Service (AMS)

CentOS 7 ?? amsd ?????????? SPP ISO ??????????

amsd-1.3.2-3016.4.rhel7.x86\_64.rpm

??????CentOS 6.x

1. ???????? SPP ISO ?????????????????? \*.sh ??????????????????
2. ?????????? UI ??

?????????????????????????????

hp-ams-2.3.0-1778.39.rhel6.x86\_64.rpm  
 hp-smh-templates-10.3.0-1447.15.noarch.rpm  
 hp-health-10.30-1752.18.rhel6.x86\_64.rpm  
 hp-snmp-agents-10.30-2819.16.rhel6.x86\_64.rpm

TIP:

?? SPP (864794\_001\_spp-2016.04.0-SPP2016040.2016\_0317.20.iso) ?????????? RPMs  
 hp-smh-template  
 hp-snmp-agents  
 hp-ams  
 hp-health

?????

yum localinstall \*.rpm



```

dlmod cmaX /usr/lib64/libcmaX64.so
rwcommunity <community-string> 127.0.0.1
rocommunity <community-string> 127.0.0.1
rwcommunity <community-string> 192.168.21.224 # the IP to SIM Server
rocommunity <community-string> 192.168.21.224 # the IP to SIM Server
syscontact Root <root@localhost> (configure /etc/snmp/snmp.local.conf)
syslocation Unknown (edit /etc/snmp/snmpd.conf)

```

?? SNMP ???????

```

service snmpd restart
service hp-snmp-agents restart

```

??????

System Management Homepage  
<https://xxx.xxx.xxx.xxx:2381/??> root ??

?? iLO

NOTE:

??????? HP SIM ???

1. ?? SNMP

iLO Admin > Administration > Management  
 SNMP Settings)

- Enable: Agentless Management
- System Location: <??>
- System Contact: <??> Admin@host.name
- System Role: <??> Oracle VM Server #2
- System Role Detail: <??>
- Read Community: <???? SNMP ?????????? SIM ??? Discover ??>
- Trap Community: <???? SNMP ?????????? SIM ??? Discover ??>
- SNMP Alert Destination: <SIM Server IP>

SNMP Alerts)

???? Enabled

2. ?? iLO ?????????????????? HP SIM Server ??

iLO Admin > Administration > User Administratio

**SIM ??? Discover**

????? Linux ?? SIM ?????????? SIM ?????????? Discover

HP SIM Admin > Options > Discover > New >

- Name: <??>
- Schedule: ???

- Ping: <?????? Linux ?? IP>

- Comments: <??>

> Credentials... > SNMP > Read community string: [?? SNMP ?????????????? iLO ??????] > OK

??????

????

HP SIM Admin > Options > Discover > ?????? > Run Now

????

???? Critical Error???????? Minor Error????????

### Q & A

Q: Linux ??????? SMH ????? SIM server ????? iLO ??????????????

- Hardware Description
- Management Protocols
- More Information ?? System Management Homepage ??

A: ???????

1. Linux ??? SNMPD ??????????? community-string ? SIM Server IP?
2. ? SIM Server ?? snmpwalk -v2c -c <community-string> <Linux-IP> ????????

Q: Linux ??? SMH ?????????? root ?????? Web ???

A: ? root ?? SMH Web > Settings > Security > User Groups >

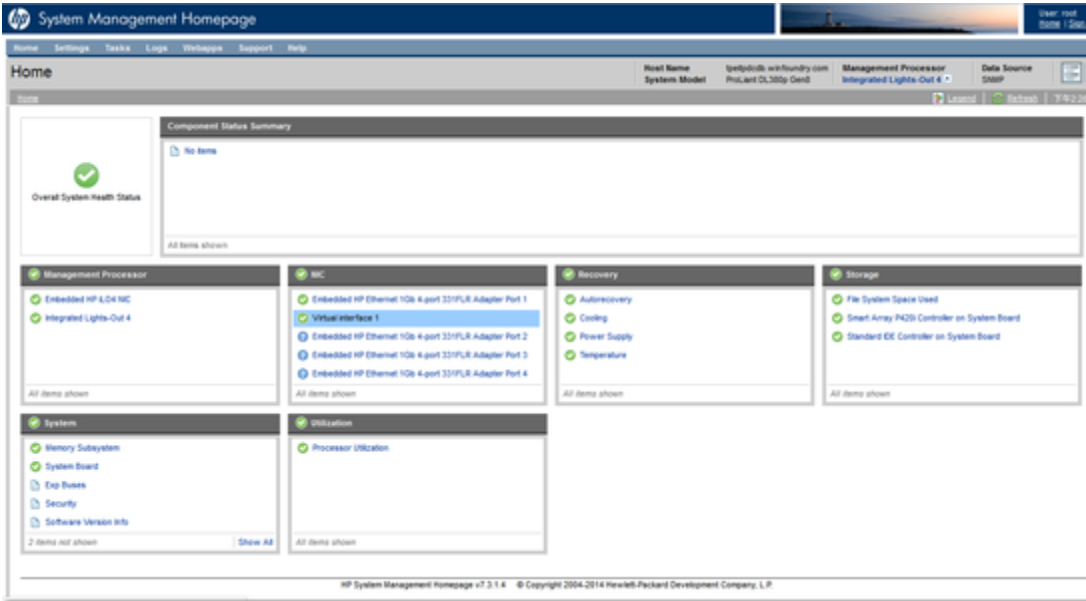
- Group Name: <??????????>
- Type: Operator

Add > Apply

NOTE: ?????????????????????????????????????

??

Linux ??? System Management Homepage



SIM ???????

