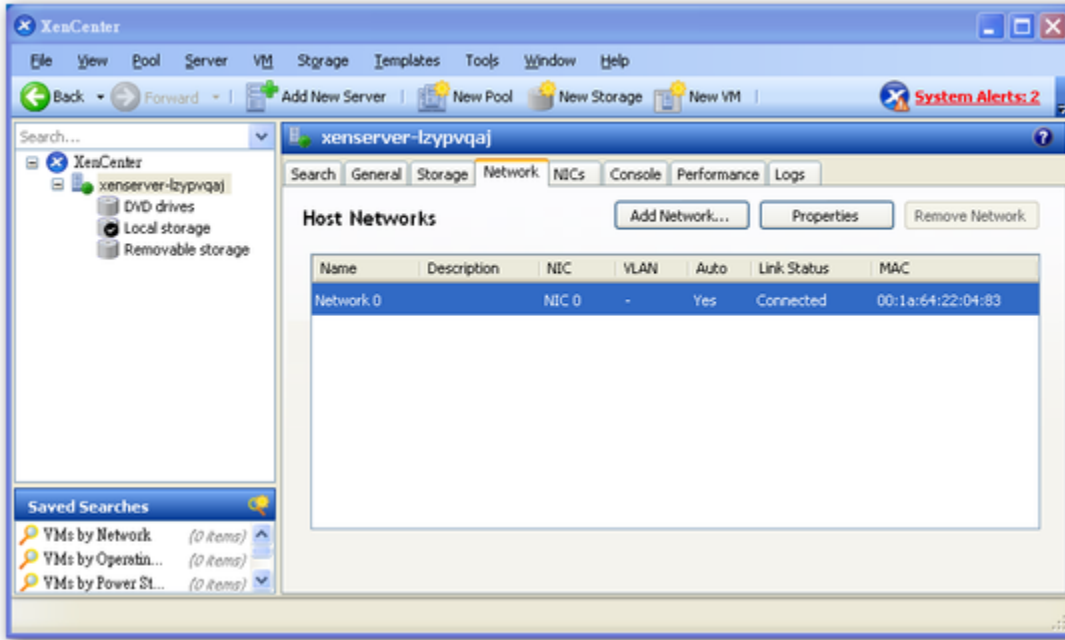


XenServer ??????????,?????????2?????,?????? XenCenter ??????????,



???? Command Shell ?? ifconfig ? lspci ?????????,????????????????????????????????????.

PS:????? VMware ESX(i) ? XenServer ?????? VMware ESX(i) ????,????????? VMware ESX(i) ??? command Shell.?? XenServer ?????????????? Command Shell ??????.?????????????????????:

1.?????????

#?????????????????????

```
[root@xenserver-lzypvqaj ~]# lspci
...
09:00.0 Ethernet controller: Intel Corporation 82571EB Gigabit Ethernet Controller (rev 06)
09:00.1 Ethernet controller: Intel Corporation 82571EB Gigabit Ethernet Controller (rev 06)
#????????????????????,??????,????????????????????? Unknown ?????????? XenServer ??????.
```

HCL(Hardware Compatibilty List)
 ?????????????????? Server ??? XenServer ??????,?????????????????????????.
<http://hcl.xensource.com/>

2?????????

?????????????????,????? lsmod ???.

```
[root@xenserver-lzypvqaj ~]# lsmod |grep -i e1000e
e1000e      110792  0
#?? XenServer ??? Intel e1000e ??????.
```

3.??????

????????????? Hub/Switch.

??????????????????, mii-tool ethtool.

????????????? # mii-tool ,????????????? ethtool ???.

```
[root@xenserver-lzypvqaj ~]# mii-tool
eth0: negotiated 100baseTx-FD, link ok
SIOCGMIIREG on eth1 failed: Input/output error
eth1: negotiated 100baseTx-FD, link ok
SIOCGMIIREG on eth2 failed: Input/output error
eth2: negotiated 100baseTx-FD, link ok
#????????? mii-tool ?????,?? ethtool.
[root@xenserver-lzypvqaj ~]# ethtool eth1
Settings for eth1:
Supported ports: [ TP ]
Supported link modes:  10baseT/Half 10baseT/Full
                      100baseT/Half 100baseT/Full
                      1000baseT/Full
Supports auto-negotiation: Yes
Advertised link modes: 10baseT/Half 10baseT/Full
                      100baseT/Half 100baseT/Full
                      1000baseT/Full
Advertised auto-negotiation: Yes
Speed: 1000Mb/s
Duplex: Full
Port: Twisted Pair
PHYAD: 1
Transceiver: internal
Auto-negotiation: on
Supports Wake-on: pumbag
Wake-on: g
Current message level: 0x00000001 (1)
Link detected: yes

[root@xenserver-lzypvqaj ~]# ethtool eth2
Settings for eth2:
Supported ports: [ TP ]
Supported link modes:  10baseT/Half 10baseT/Full
                      100baseT/Half 100baseT/Full
                      1000baseT/Full
Supports auto-negotiation: Yes
Advertised link modes: 10baseT/Half 10baseT/Full
                      100baseT/Half 100baseT/Full
                      1000baseT/Full
```

```

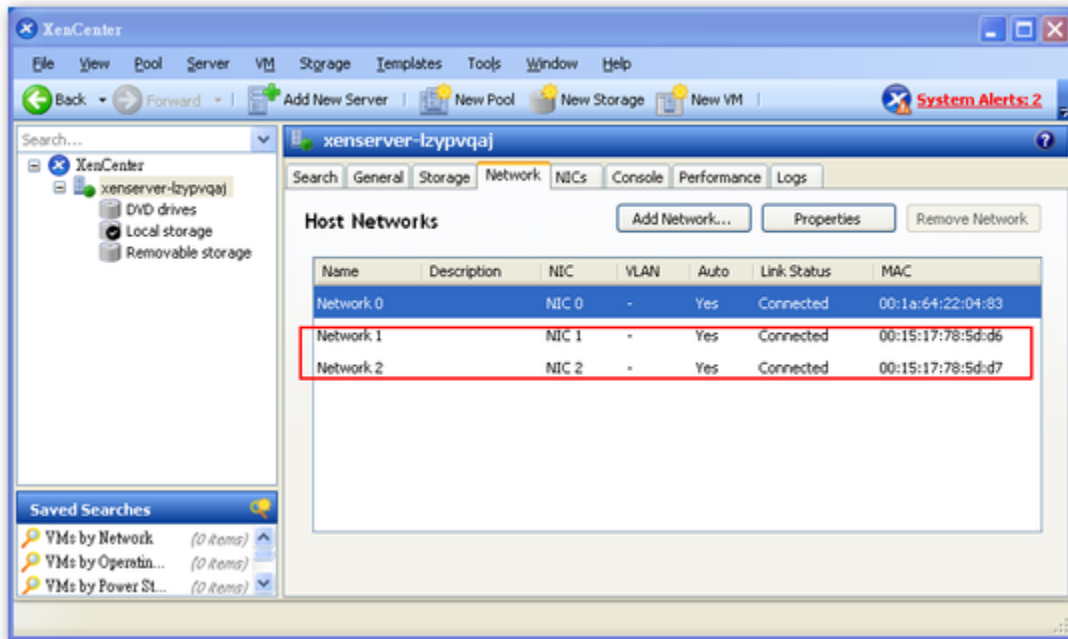
Advertised auto-negotiation: Yes
Speed: 1000Mb/s
Duplex: Full
Port: Twisted Pair
PHYAD: 1
Transceiver: internal
Auto-negotiation: on
Supports Wake-on: d
Wake-on: d
Current message level: 0x00000001 (1)
Link detected: yes
    
```

xe pif-scan ?????????????? physical interfaces.????? XenServer ? UUID ,???? xe host-list ?? UUID.

```

[root@xenserver-lzypvqaj ~]# xe host-list
uuid ( RO)          : 99b570af-d2eb-4b2b-b132-cfe44aac3395
name-label ( RW): xenserver-lzypvqaj
name-description ( RO): Default install of XenServer
[root@xenserver-lzypvqaj ~]# xe pif-scan host-uuid=99b570af-d2eb-4b2b-b132-cfe44aac3395
    
```

?????? XenCenter / XenServer / Network ??????????????????.



????? XenServer ?????????????????????? citrix ???????
<http://support.citrix.com/product/xens/v5.0/#tab-topic>
 ??? xe network command ??????????

http://docs.xensource.com/XenServer/5.0.0/1.0/en_gb/reference.html#cli-x...